

MICHIGAN DEPARTMENT OF CONSERVATION

Report no 1033

INTEROFFICE COMMUNICATION

Mc Guiley

March 3, 1943

Memorandum to the Files:

Re: Survival of trees planted on the Barry County Project

On November 18th and 19th, 1942, I made a survey of the results of planting on the Barry County Project from the fall of 1940 to the spring of 1942. Fifteen tracts were investigated with the following results:

Fall of 1940 - Tracts 122, 126, 295, and 299a

Survival was good in all places examined. Locust (black and honey) were especially strong on the Hazel and DeMotte tracts. From all appearances, the fall of 1940 was quite favorable and all trees examined appeared sturdy, although it will be two or three years still before the pines are large enough to provide rabbit cover.

Spring of 1941 - Tracts 75, 121, 300, and the Watkins tract unnumbered

In general, the plantings made during this season showed a low rate of survival. On three tracts (Ferguson, White, and Watkins), very few trees could be found. Nevertheless, on tract 121, immediately west of Otis Lake, there was very good survival, estimated in some places as high as 90% and the trees appeared fully as strong as those planted in the fall of 1940.

Fall of 1941 - Tracts 275, 294 and 301

Results of this season's plantings were mediocre. On the Metz place, tract 301, survival was very poor with only an occasional white pine surviving. This tract should probably be replanted. The Hemming tract, 294, was fairly good with excellent survival in the north end but with a good many gaps elsewhere on the tract. The Bowerman tract, 275, showed good survival and the trees looked sturdy.

Spring of 1942 - Tracts 240, 293, 293a, and 314

Survival from this season's plantings apparently has been the highest of any year so far. Pines have shown very nearly 100% survival through the first summer. This is a hopeful sign since in the year 1941 our greatest mortality occurred during the first summer. In some instances, especially on tract 293, trees were possibly planted with too short spacing and the high rate of survival will probably result in a very dense stand of pine but this should not be unfavorable in view of the fact that the planting was restricted to chain wide strips. Spruce has not survived as well as pine and many of the trees now living are apparently fairly weak. It is still uncertain if we will have a high survival of this species. Cedar, which was tried for the first time, is also uncertain as yet although there has not been any high mortality so far.

In summing up the results, it appears that spring and fall plantings to date have had about equal results, probably variations in weather are more important than the season selected. In 1942, we had an especially wet summer and survival was high as contrasted with the hot dry summer of 1941 when our spring plantings, in general, failed.

Fred H. Dale

FHD:mb

RECEIVED

Caro, Michigan
June 3, 1948

Memorandum to H. D. McGinley

Re: Tree & shrub survival

Following are survival counts on trees and shrubs planted in the Caro District during 1947. Percentages are used.

Planted in spring 1947--Deford & Vassar Areas

Area	Date	Wild Plum	Junberry	Rose	Chestnut	Black Cherry	Cedar	Black Elder	Mountain Ash
1	5-7-48							75	50
2	"					50		5	10
3	6-1-48			92		40		40	40
4	"					60		40	40
5	"			92				40	40
6	"			92					
7	5-16-48	50		98		75			30
9	6-1-48	40	50			50		15	20
10	"	40	50			50		15	15

Area	Date	Nannyberry	N. Pine	Walnut	Snowberry
1	5-7-48	85	75	10	90
2	"	65	10	5	
3	6-1-48	55	15	5	
4	"	55	25	5	
5	"	65	25	5	
6	"	65	50	5	
7	5-16-48	40	50	5	90
9	6-1-48	40	30	5	
10	"	30	30	5	

Planted in fall 1947--Deford Area

Area	Date	Rose	Chestnut	Cedar	N. Pine	Walnut
1	5-16-48	95				
2	"	95				
3	"	98				
4	"			10		2
5	"				25	
6	"		5		40	2
7	"		10		75	5
8	5-7-48			10		5
9	"	98				
10	"	98			75	5
11	"	98			75	5
12	"	98				
13	"	98				

Ht/bm
cc/ Burroughs

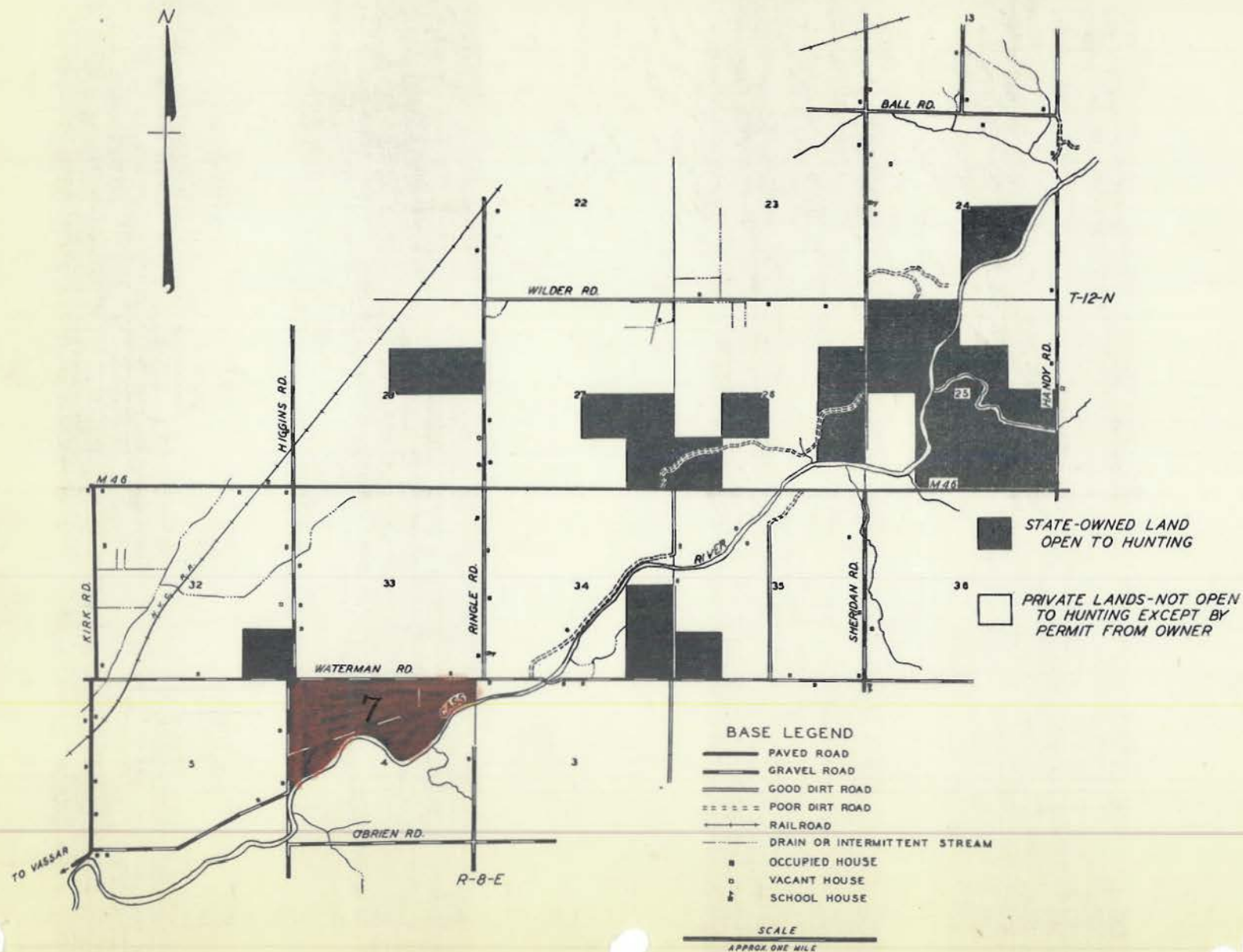
Harold Tubbs
District Game Manager

RJB

Planted spring of 1947

MICHIGAN
DEPARTMENT OF CONSERVATION
GAME DIVISION

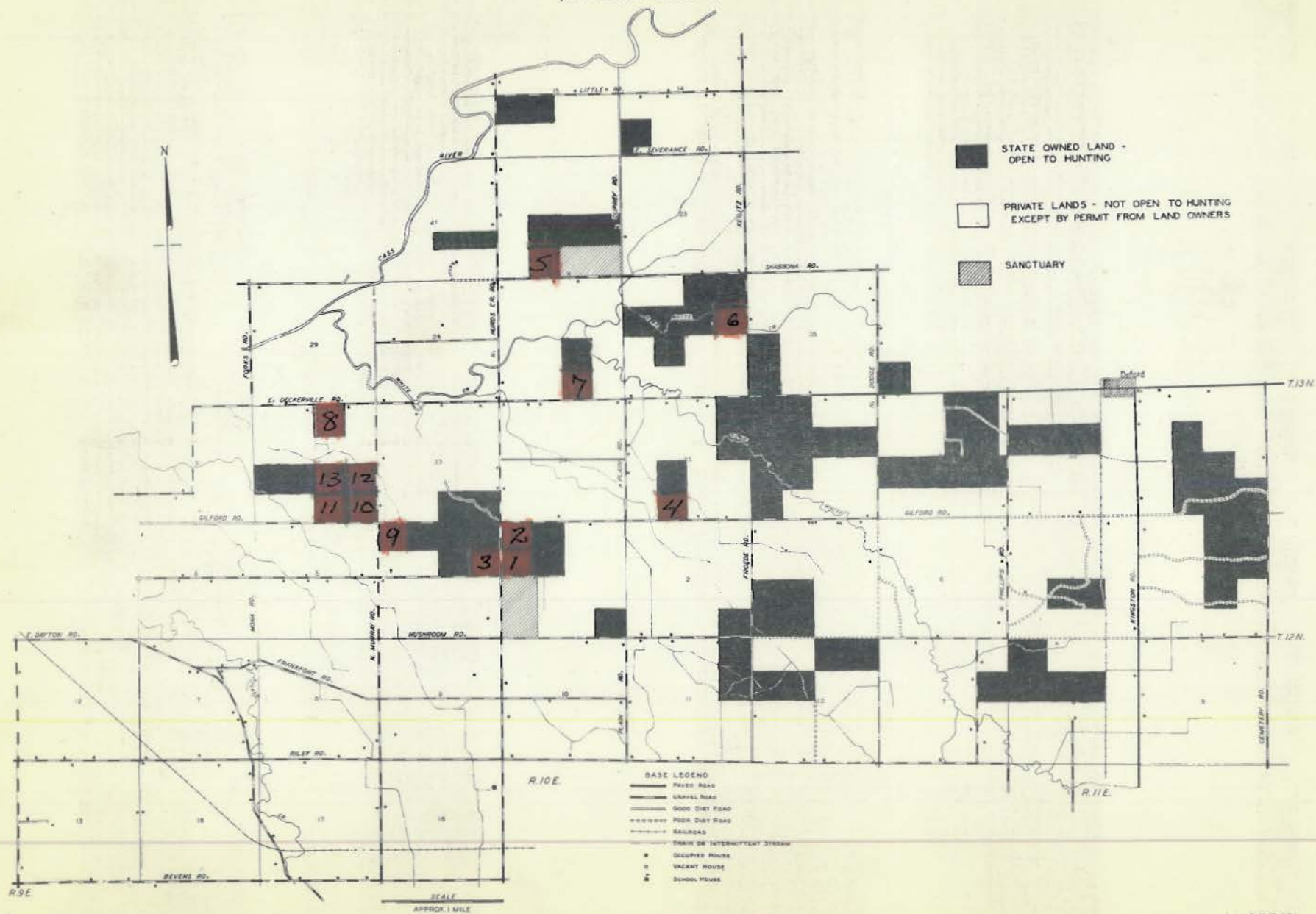
VASSAR STATE GAME AREA
(TUSCOLA COUNTY)



Planted fall of 1947

MICHIGAN
DEPARTMENT OF CONSERVATION
GAME DIVISION

DEFORD STATE GAME AREA (TUSCOLA COUNTY)



Planted spring of 1947

MICHIGAN
DEPARTMENT OF CONSERVATION
GAME DIVISION

DEFORD STATE GAME AREA (TUSCOLA COUNTY)

