



Center for Educational Performance and Information

---

# **EDUCATIONAL ENTITY MASTER (EEM)**

---

Entity Characteristics  
(Technical Document)

Version 6.0

# Table of Contents

## Table of Contents

Version History .....	5
<b>Introduction</b> .....	6
<b>List of Characteristics</b> .....	6
<b>Data Types</b> .....	9
<b>Characteristics - Details</b> .....	9
1. Accepts From: .....	9
2. ACT Test Center Code .....	10
3. ACT Test Center Status .....	10
4. Actively Educating Students .....	10
5. Additional Points of Pride .....	11
6. Agreement Number .....	11
7. Alternative Education Programs for Suspended/Expelled Students .....	12
8. Annual School-Wide Reading Program .....	13
9. Central Contractor Registration (CCR) Date .....	14
10. Chartering Agency .....	14
11. Chartering Agency Code .....	15
12. Class Schedule .....	17
13. Closed – Never Opened .....	17
14. College Preparatory Courses Offered .....	18
15. College/University Type .....	18
16. Common Assessments Developed and Implemented .....	19
17. Common Name .....	20
18. Community Eligibility Provision .....	20
19. Contract .....	21
20. Contract Effective Date .....	21
21. County Code .....	21
22. CTE .....	23
23. Current Status of Entity .....	24
24. Data Universal Numbering System (DUNS) Name .....	25
25. Data Universal Numbering System (DUNS) Number .....	25
26. Date of Assignment to the EAS .....	26
27. Date of Exit from EAS .....	26
28. Do Not Assess .....	27
29. Early Childhood Program Participation .....	27
30. Early Childhood Program Participation (Summary) .....	30
31. Early/Middle College .....	32
32. Early Middle College Type .....	33
33. EDEN Notification Flag .....	33
34. EDEN Notification Details .....	34
35. Education Management Organization .....	34

.....	35
36. Education Service Provider Name .....	35
37. Educational Setting Button .....	35
38. Educational Settings Actual (Summary).....	39
39. Educational Settings Authorized (Summary) .....	44
40. E-Mail Address .....	48
41. Entity Close Date .....	49
42. Entity Code .....	49
43. Entity Grandparent.....	51
44. Entity Open Date.....	51
45. Entity Ownership .....	52
46. Entity Parent.....	52
47. Entity Retroactively Closed .....	53
48. Entity Retroactively Opened.....	54
49. Entity Type.....	54
50. Fax Extension.....	55
51. Fax Number .....	55
52. Federal Employer Identification Number (FEIN).....	55
53. FIPS Code .....	56
54. Functions of Non-Instructional Ancillary Facilities .....	56
55. Geographical LEA District Name (Code).....	57
56. Grades Actual (Searchable Summary).....	58
57. Grades Actual (Summary) .....	59
58. Grades Authorized (Searchable Summary) .....	61
59. Grades Authorized (Summary) .....	62
60. Grades Button .....	63
61. Headcount Flag .....	65
62. International Baccalaureate Program .....	65
63. Is DPPD (District Provided Professional Development) .....	66
64. Locale Code .....	67
65. Magnet School .....	69
66. Migrant Education Program.....	70
67. NCES District Code.....	70
68. NCES School Code.....	71
69. Neglected/Delinquent Facility .....	71
70. No. of Community Outreach Programs or Events .....	72
71. No. of NBPTS Certified Teachers .....	72
72. Non-Instructional Ancillary Functions (Summary) .....	73
73. Nonpublic ISD .....	74
74. Official Name of Entity .....	75
75. Path of Entry into EAS .....	75
76. Percentage of Parent Participation in PTO and /or PT Conferences .....	76
77. Percentage of Students on Honor Roll.....	77
78. Phone Number .....	77
79. Phone Extension.....	77
80. Previous ISD/LEA/PSA District.....	78

81. Prosperity Region.....	78
82. PSA Replacement School .....	81
83. Receives Transportation Services From .....	81
84. Regional Educational Media Centers.....	82
85. Religious Denomination Name (Code).....	82
86. Reopened as PSA School (from closed LEA school) .....	84
87. SAT Test Center Code .....	84
88. SAT Test Center Status.....	85
89. School Emphasis .....	85
90. School Of Excellence.....	87
91. School of Excellence – Conversion Date.....	88
92. Shared Educational Entity (SEE) Participation .....	88
93. Shared Education Entity (SEE) Subtype.....	89
94. Shared Time Status .....	90
95. Strict Discipline Academy .....	90
96. Student Mentorship Program .....	91
97. Title I Status .....	92
98. Title I Fund Recipient .....	92
99. Title I Status Date .....	92
100. Top to Bottom Cohort.....	93
101. Top to Bottom Status .....	93
102. Urban High School Academy .....	94
103. View State Assessments .....	95
104. Web Site Address of Entity.....	95
105. World Languages Offered.....	96
<b>Additional Characteristics for an Entity .....</b>	<b>98</b>
Entity:	
EntityAddress:.....	99
EntityContact: .....	102
TitleINotEligible:.....	106
Entity Code: District Code/Building Code/School Code/Facility Code.....	106

## Version History

Version Number	Author	Date	Notes
1.0	T. Suseela P. Gammage	03/15/2010	Created the document with list of characteristics.
2.0	T. Suseela	09/28/2012	Updated the document with the list of characteristics that are currently active.
3.0	C. Twichell	08/27/2014	Updated the document to include all new characteristic, grades, educational settings and contacts added or updated since 09/2012
4.0	T. Suseela	08/28/2014	Updated the document to include the database related ids, fields, and values from the database for the new characteristics.
5.0	T. Suseela T. Anderson	8/21/2015	Updated the document to include all new characteristics and a changed characteristic name.
6.0	T. Suseela T. Anderson	10/20/2016	Updated the documents with additional characteristics Early / Middle College Type, SAT Test Code, SAT Test Center Status. Update the Chartering Agency List, Address Type, Contact type, and School Year Calendar which was not updated for the past 6 years with new columns and data.

# Introduction

---

The fields or data elements associated with an entity are defined as characteristics in the Educational Entity Master (EEM). The main characteristics are listed in a table of characteristics along with their data type, source table, source field information and any constraints related to them (e.g., Readonly, IsFixed, IsUnique etc.). The other data elements of an entity are distributed in a few other tables. The first section will describe the main characteristics, and the second section will describe the additional characteristics.

Currently, there are 105 active characteristics defined in the characteristics table for the EEM. Each entity may have all or a few of the characteristics associated with each entity, depending on the Entity Type. The defined characteristics in the characteristics table associated with an entity are stored in the following tables: Entity, EntityAcceptsFrom, EntityAncillaryFunction, EntityCharacteristic, EntityContract, EntityEducationalSetting, EntityGrade, EntityProgram, EntityRelationship, EntityScheduleType and EntitySchoolType.

## List of Characteristics

1	Accepts Students From
2	ACT Test Center Code
3	ACT Test Center Status
4	Actively Educating Students
5	Additional Points of Pride
6	Agreement Number
7	Alternative Education Programs for Suspended/Expelled Students
8	Annual School-Wide Reading Program
9	Central Contractor Registration (CCR) Date
10	Chartering Agency
11	Chartering Agency Code
12	Class Schedule
13	Closed - Never Opened
14	College Preparatory Courses Offered
15	College/University Type
16	Common Assessments Developed and Implemented
17	Common Name
18	Community Eligibility Provision
19	Contract
20	Contract Effective Date
21	County Code
22	CTE
23	Current Status of Entity
24	Data Universal Numbering System (DUNS) Name
25	Data Universal Numbering System (DUNS) Number

26	Date of Assignment to the EAS
27	Date of Exit from EAS
28	Do Not Assess
29	Early Childhood Program Participation
30	Early Childhood Program Participation (Summary)
31	Early/Middle College
32	Early/Middle College Type
33	EDEN Notification Details
34	EDEN Notification Flag
35	Education Management Organization
36	Education Service Provider Name
37	Educational Setting Button
38	Educational Settings Actual (Summary)
39	Educational Settings Authorized (Summary)
40	Email Address
41	Entity Close Date
42	Entity Code
43	Entity Grandparent
44	Entity Open Date
45	Entity Ownership
46	Entity Parent
47	Entity Retroactively Closed
48	Entity Retroactively Opened
49	Entity Type
50	Fax Extension
51	Fax Number
52	Federal Employer Identification Number (FEIN)
53	FIPS code
54	Functions of Non-Instructional Ancillary Facilities
55	Geographical LEA District Name (Code)
56	Grades Actual (Searchable Summary)
57	Grades Actual (Summary)
58	Grades Authorized (Searchable Summary)
59	Grades Authorized (Summary)
60	Grades Button
61	Headcount Flag
62	International Baccalaureate Program
63	Is DPPD
64	Locale Code
65	Magnet School
66	Migrant Education Program

67	NCES District Code - National Center for Education Statistics
68	NCES School Code - National Center for Education Statistics
69	Neglected/Delinquent Facility
70	No. of Community Outreach Programs or Events
71	No. of NBPTS Certified Teachers
72	Non-Instructional Ancillary Functions (Summary)
73	NonPublicISD
74	Official Name of Entity
75	Path of Entry into EAS
76	Percentage of Parent Participation in PTO and/or PT Conferences
77	Percentage of Students on Honor Roll
78	Phone Extension
79	Phone Number
80	Previous ISD/LEA/PSA District
81	Prosperity Region
82	PSA Replacement School
83	Receives Transportation Services From
84	Regional Educational Media Centers
85	Religious Denomination Name (Code)
86	Reopened as PSA school (from closed LEA school)
87	SAT Test Center Code
88	SAT Test Center Status
89	School Emphasis
90	School of Excellence
91	School of Excellence - Conversion Date
92	Shared Educational Entity (SEE) Participation
93	Shared Educational Entity (SEE) Subtype
94	Shared Time Status
95	Strict Discipline Academy
96	Student Mentorship Program
97	Title I Status
98	Title I Fund Recipient
99	Title I Status Date
100	Top to Bottom Cohort
101	Top to Bottom Status
102	Urban High School Academy
103	View State Assessments
104	Website Address of Entity
105	World Languages Offered



# Data Types

The data type of each characteristic is associated with a data type ID. Each data type ID relates to the look-up table **Data Type**, which contains the definitions of all the data types.

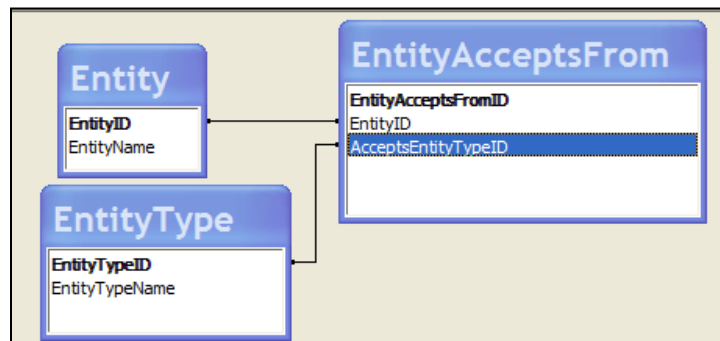
The following table defines the names and types of the data of all the characteristics.

Data Type ID	Data Type Name
1	Text (numbers and letters)
3	Numeric Text (can have leading zeros)
4	Whole Number (integer)
6	List of Values (choose from list)
7	Date(only)
9	Date and Time
10	Long Text (over 255 characters)
11	Yes/No (or True/False, or Boolean)
12	Button

## Characteristics - Details

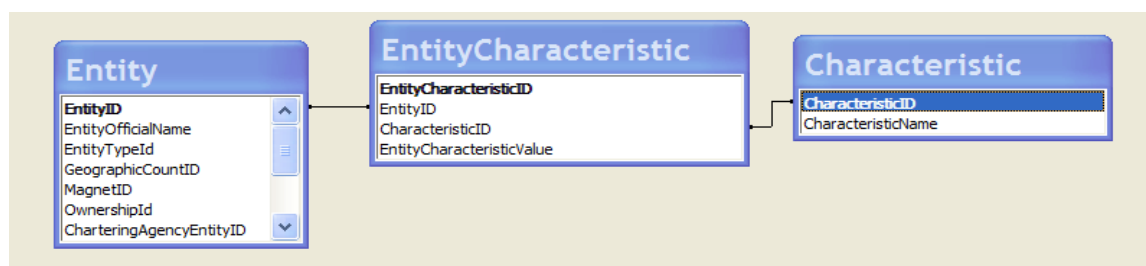
### 1. Accepts From:

Description:	Entity Types that are allowed to submit data to this entity.
Characteristic ID	113
Data Type:	4: Whole Number (integer)
Field Restriction/Rule	This field should only be used with Michigan School for the Deaf (MSD) and Michigan School for the Blind-Low Incidence Outreach (MSB-LIO) records.
Characteristic Source Table	Entity Accepts From
Characteristic Value Field	Entity Type ID
Relationship Description	Each entity can accept the data from more than one Entity Type.
Notes:	This will be a list of Entity Types that are allowed to submit data to this Entity (e.g., MSD accepts student data from any ISD District, LEA District, PSA District).



## 2. ACT Test Center Code

Description:	Center code assigned by ACT
Characteristic ID	261
Data Type:	1: Text (numbers and letters)
Field Restriction/Rule	
Characteristic Source Table	Entity Characteristic
Characteristic Value Field	EntityCharacteristicValue
Relationship Description	
Notes:	The six-digit test center code assigned by ACT for the Michigan Merit Exam (MME) test center. These data are entered by Michigan Department of Education (MDE).



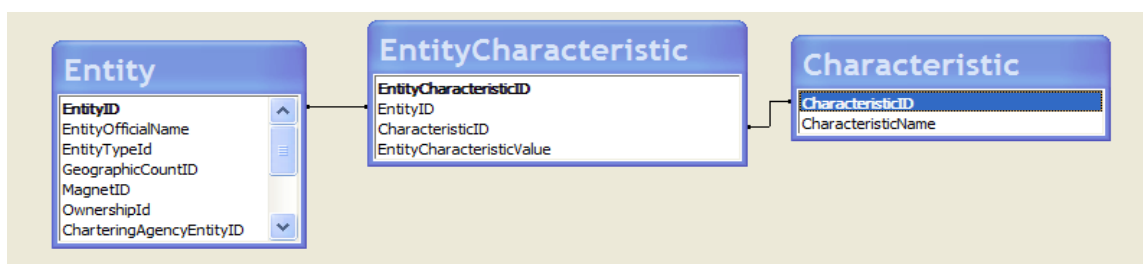
## 3. ACT Test Center Status

Description:	The Bureau of Assessment and Accountability (BAA) at MDE gets an initial file from ACT to update this field. Subsequently, BAA receives periodic updates from ACT until testing begins. 0 = Not an ACT approved school. 1 = ACT Approved Testing School 2 = ACT Approved Testing School, Accommodations Only Each Michigan Merit Exam administration school is required to be approved by ACT for testing. Each year this characteristic needs to be reset to zero on all schools.
Characteristic ID	
Data Type:	List of Values (choose from list)
Field Restriction/Rule	
Characteristic Source Table	
Characteristic Value Field	
Relationship Description	
Notes:	

## 4. Actively Educating Students

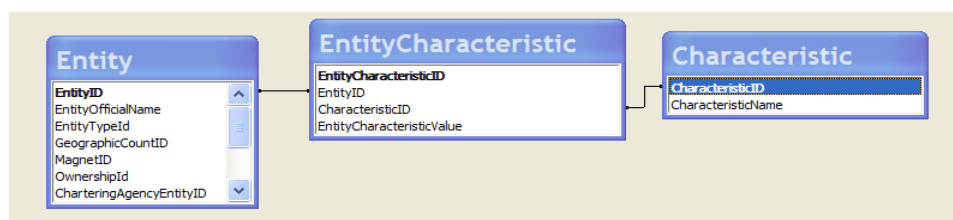
Description:	Describes whether a school district is open for the purpose of educating students.
Characteristic ID	365
Data Type:	11: Yes/No (or True/False, or Boolean)
Field Restriction/Rule	

Characteristic Source Table	Entity Characteristic
Characteristic Value Field	EntityCharacteristicValue
Relationship Description	
Notes:	This characteristic is intended to differentiate between those districts that are open for the purpose of educating students and those that are open for other purposes such as paying off debt.



## 5. Additional Points of Pride

Description:	Additional points of Pride to be posted on MI School Data Web site.
Characteristic ID	350
Data Type:	1: Text (numbers and letters)
Field Restriction/Rule	
Characteristic Source Table	Entity Characteristic
Characteristic Value Field	EntityCharacteristicValue
Relationship Description	
Notes:	The additional points a school may enter for Points of Pride in EEM to be posted on MI School Data Web site.



## 6. Agreement Number

Description:	System-generated Number assigned to each Entity	
Characteristic ID	146	
Data Type:	1: Text (numbers and letters)	
Field Restriction/Rule	Agreement Number is auto-generated by the system based on the Entity Type. The following matrix describes how the Agreement Number is generated/assigned for each Entity Type.	
	<b>Entity Type</b>	<b>Agreement Number</b>

	ISD, LEA, PSA, State Districts	5-digit District Number
	ISD School, LEA School, PSA School, State School, ISD UEP, LEA UEP, PSA UEP, State UEP, ISD NIAF, LEA NIAF, PSA NIAF, State NIAF	5-digit District Number + last four digits of "building" code (Original Entity Code)
	Nonpublic Schools	5-digit District Number of the district from which the school "Receives Transportation Services From" + last four digits of "building" code (Original Entity Code)
	Higher Education Colleges/Universities	5-digit District Number + last four digits of Original Entity Code
	Higher Education Departments/Schools	Not yet defined
Characteristic Source Table	Entity	
Characteristic Value Field	Agreement Number	
Relationship Description	Each entity has one agreement number.	
Notes:	This is the Agreement Number (formerly referred to as the recipient code) used by the Grants Coordination and School Support office of the MDE. This is uploaded by MDE. The EEM system assigns 9-digit Agreement Numbers to new entities.	

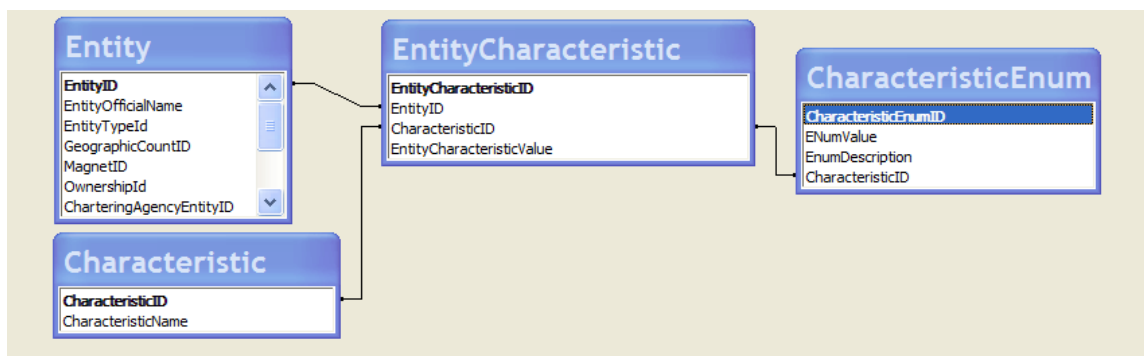
## 7. Alternative Education Programs for Suspended/Expelled Students

Description:	This field compiles information on schools and unique education providers that provide alternative education programs for suspended and/or expelled students	
Characteristic ID	150	
Data Type:	6: List of Values (choose from list)	
Field Restriction/Rule		
Characteristic Source Table	Entity Characteristic	
Characteristic Value Field	Alternative Education Programs for Suspended/Expelled Students	
Look-Up Table for List of Values	CharacteristicEnum	
List of Values From CharacteristicEnum Table	<b>Enum Description</b>	
	The school/unique education provider does not provide alternative education programs to suspended and/or expelled students.	
	The school/unique education provider provides alternative education programs to suspended and/or expelled students from the home district only.	
	The school/unique education provider provides alternative education programs to suspended and/or expelled students from the home district and other school districts.	

Relationship Description	Each entity may have only one record for this characteristic in the Entity Characteristic table which stores the value of the Enum Description in the Entity Characteristic Value.
Notes:	<p>If the entity does not provide an alternative education program, mark the first choice ("does not provide"). If the entity provides an alternative education program to suspended/expelled students from the home district only, mark the second choice. If the entity provides an alternative education program to suspended/expelled students from the home district and other districts, mark the third choice.</p> <p>This must be reported by all districts for all schools and unique education providers.</p>

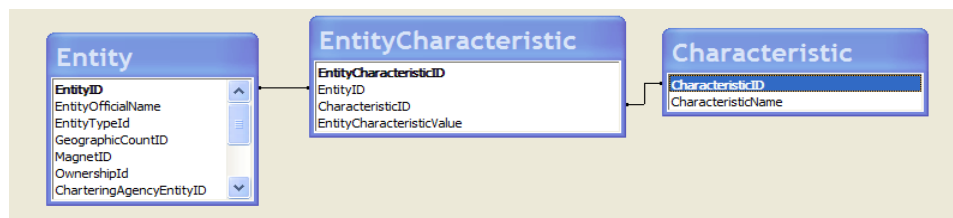
**CharacteristicEnum:**

CharateristicEnumId	CharacteristicID	EnumDescription
209	150	The school/unique education provider does not provide alternative education programs to suspended and/or expelled students.
210	150	The school/unique education provider provides alternative education programs to suspended and/or expelled students from the home district only.
211	150	The school/unique education provider provides alternative education programs to suspended and/or expelled students from the home district and other school districts.

**8. Annual School-Wide Reading Program**

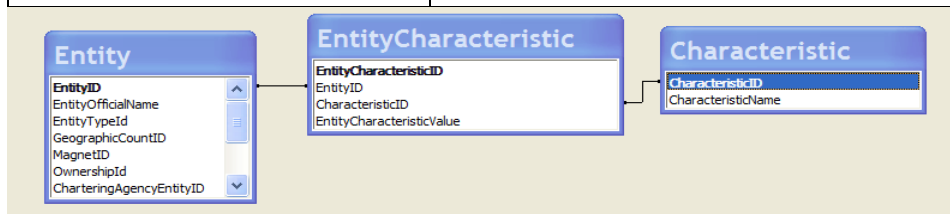
Description:	Annual School-Wide Reading Program submitted for Points of Pride
Characteristic ID	342
Data Type:	11: Yes / No (or True False, or Boolean)
Field Restriction/Rule	
Characteristic Source Table	Entity Characteristic

Characteristic Value Field	EntityCharacteristicValue
Relationship Description	
Notes:	If there is a defined reading program available for participation by all students as Points of Pride, this will be marked as yes.



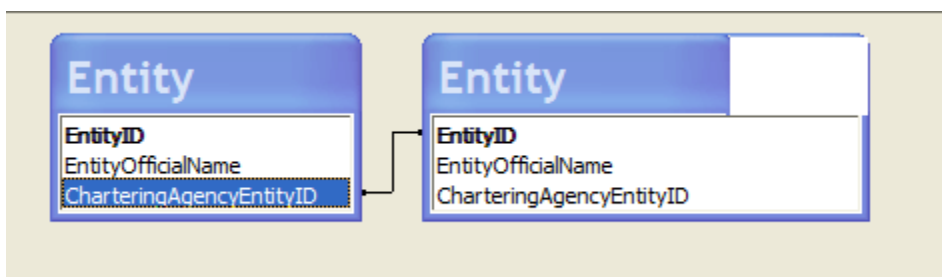
## 9. Central Contractor Registration (CCR) Date

Description:	American Recovery and Reinvestment Act (ARRA) grant recipients' Central Contractor Registration (CCR).
Characteristic ID	339
Data Type:	7: Date (only)
Field Restriction/Rule	
Characteristic Source Table	Entity Characteristic
Characteristic Value Field	Entity Characteristic value
Relationship Description	
Notes:	After obtaining a Data Universal Numbering System (DUNS) number, grant recipients must register with the Central Contractor Registration (CCR). This is a government-wide registry for organizations that seek grants from or otherwise do business with the federal government. Grant applicants must be registered. The date of the most recent CCR registration must be entered.



## 10. Chartering Agency

Description:	This is the educational entity that issues a public school academy (PSA) charter.
Characteristic ID	102
Data Type:	4: Whole Number (integer)
Field Restriction/Rule	
Characteristic Source Table	Entity
Characteristic Value Field	Chartering Agency Entity ID
Relationship Description	
Notes:	This characteristic will indicate whether or not this entity is an authorized chartering agency. These data are provided by the Michigan Department of Education.

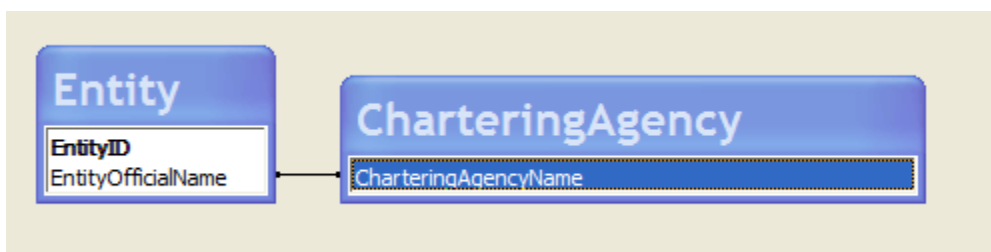


## 11. Chartering Agency Code

Description:	This is code of the educational entity that issues a public school academy (PSA) charter.	
Characteristic ID	101	
Data Type:	1: Text (numbers and letters)	
Field Restriction/Rule		
Characteristic Source Table	Entity	
Characteristic Value Field	Chartering Agency Code	
Look Up Table for List of Values	Chartering Agency	
Relationship Description		
Notes:	This is the educational entity that issues a public school academy (PSA) charter. This characteristic will indicate whether or not this entity is an authorized chartering agency. These data are provided by the Michigan Department of Education.	
	<b>Chartering Agency Code</b>	<b>Chartering Agency Name</b>
	0300000000	Allegan Area Educational Service Agency
	4304000000	Baldwin Community Schools
	0000666817	Bay Mills Community College
	0900000000	Bay-Arenac ISD
	7200000000	C.O.O.R. ISD
	5001000000	Center Line Public Schools
	0000002243	Central Michigan University
	1600000000	Cheb-Otsego-Presque Isle ESD
	1705000000	DeTour Area Schools
	8201000000	Detroit City School District
	0000002259	Eastern Michigan University
	2305000000	Eaton Rapids Public Schools
	2300000000	Eaton RESA
	8225000000	Ecorse Public Schools
	8406000000	Education Achievement Authority of Michigan
	0000002260	Ferris State University
	2500000000	Genesee ISD

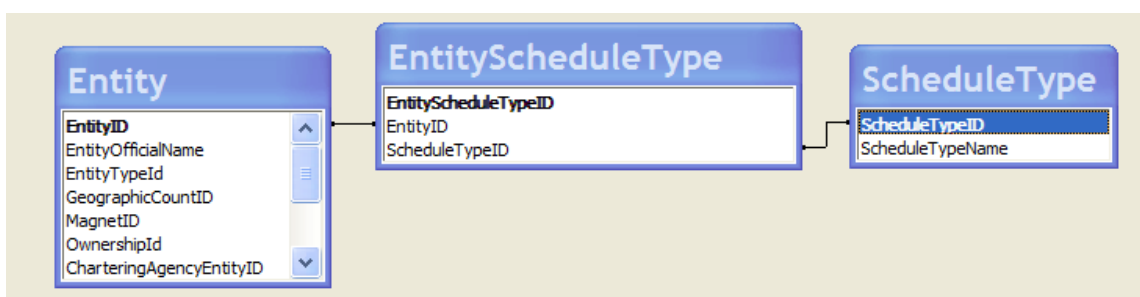
2507000000	Genesee School District
4101000000	Grand Rapids Public Schools
0000002268	Grand Valley State University
8207000000	Highland Park City Schools
3000000000	Hillsdale ISD
3500000000	Iosco RESA
0000002274	Jackson College
3900000000	Kalamazoo RESA
0000002276	Kellogg Community College
0000002293	Lake Superior State University
8209500000	Livonia Public Schools School District
5000000000	Macomb ISD
6314000000	Madison District Public Schools
5107000000	Manistee Area Public Schools
5100000000	Manistee ISD
8307000000	Mesick Consolidated Schools
5600000000	Midland County Educational Service Agency
6102000000	Muskegon Heights School District
0000002301	Northern Michigan University
0000002307	Oakland University
7000000000	Ottawa Area ISD
7401000000	Port Huron Area School District
8211000000	Redford Union Schools, District No. 1
7300000000	Saginaw ISD
0000002314	Saginaw Valley State University
8208000000	School District of the City of Inkster
7400000000	St. Clair County RESA
4505000000	Suttons Bay Public Schools
2801000000	Traverse City Area Public Schools
5915000000	Vestaburg Community Schools
0000002328	Washtenaw Community College
8100000000	Washtenaw ISD
8200000000	Wayne RESA
0000002329	Wayne State University
5300000000	West Shore Educational Service District
8114000000	Whitmore Lake Public School District
4102600000	Wyoming Public Schools





## 12. Class Schedule

Description:	This denotes school or school district session types offered at this entity.	
Characteristic ID	134	
Data Type:	4: Whole Number (integer)	
Field Restriction/Rule		
Characteristic Source Table	Entity Schedule Type	
Characteristic Value Field	Schedule Type ID	
Look Up table for List of Values	Schedule Type	
List of Values from Schedule Type	<b>ScheduleTypeID</b>	<b>ScheduleTypeName</b>
	1	Full school year
	2	Semester
	3	Trimester
	4	Quarter
	7	Summer Term
	11	Other
Relationship Description	Each entity may have zero or more than one Schedule Type associated with it.	
Notes:		



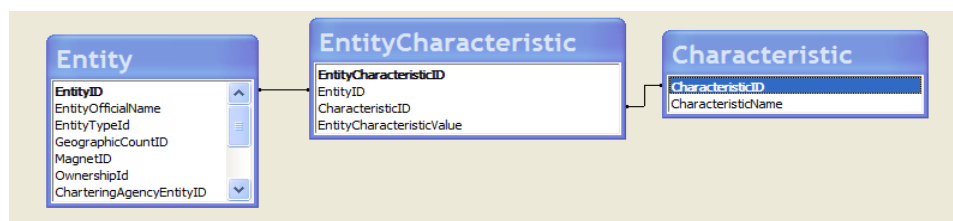
## 13. Closed – Never Opened

Description:	This characteristic denotes that an entity code was assigned to the entity in advance, but the entity never opened.
Characteristic ID	317
Data Type:	11: Yes/No (or True/False, or Boolean)
Field Restriction/Rule	
Characteristic Source Table	Entity Characteristic

Characteristic Value Field	Closed - Never Opened
Relationship Description	
Notes:	This could have happened because of a change in plans by the district or because of an error for a variety of reasons (e.g., miscommunication) at the district level.

## 14.College Preparatory Courses Offered

Description:	College Preparatory Courses Offered by the school as points of pride.
Characteristic ID	340
Data Type:	11: Yes / No (or True False, or Boolean)
Field Restriction/Rule	
Characteristic Source Table	Entity Characteristic
Characteristic Value Field	EntityCharacteristicValue
Relationship Description	
Notes:	If the school offers college preparatory courses and/or curriculum that may include International Baccalaureate, Advanced Placement, Pre-AP, dual enrollment, etc. as Points of Pride, this will be marked as yes.

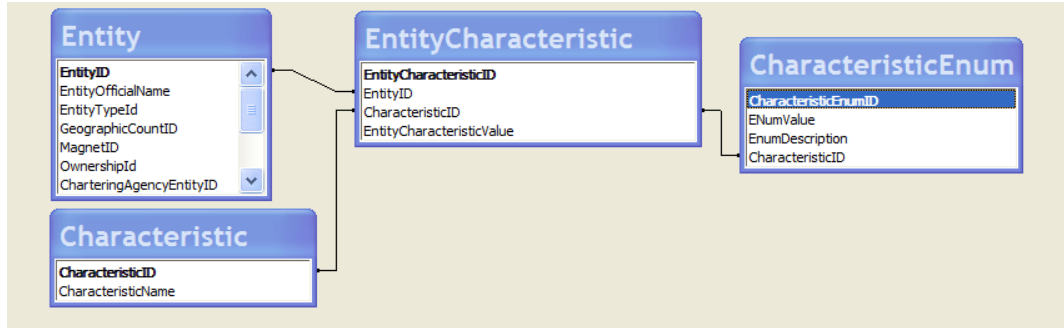


## 15.College/University Type

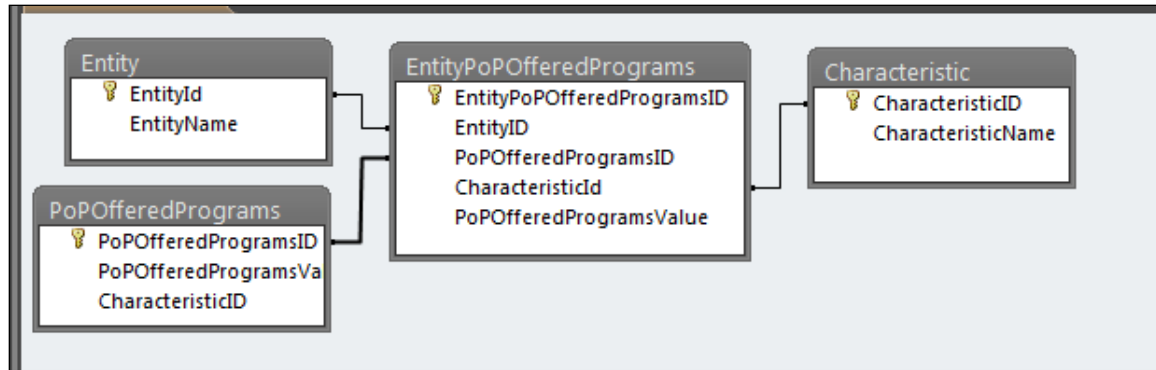
Description:	This characteristic defines what type of college or university this entity represents. More than one type can be assigned to a single entity.	
Characteristic ID	262	
Data Type:	6: List of Values (choose from list)	
Field Restriction/Rule		
Characteristic Source Table	Entity Characteristic	
Characteristic Value Field	College/University Type	
Look-Up Table for List of Values	CharacteristicEnum	
List of Values From CharacteristicEnum Table	<b>Enum Description</b>	
	Four Year Public	
	Two Year Public	
	Tribally Controlled	
	Four Year Private	
	Two Year Private	
Notes		

**CharacteristicEnum:**

CharateristicEnumId	CharacteristicID	EnumDescription
189	262	Four Year Public
190	262	Two Year Public
191	262	Tribally Controlled
192	262	Four Year Private
193	262	Two Year Private

**16.Common Assessments Developed and Implemented**

Description:	Common Assessments Developed and Implemented as part of Points of Pride		
Characteristic ID	349		
Data Type:	11: Yes / No (or True False, or Boolean)		
Field Restriction/Rule			
Characteristic Source Table	Entity Characteristic		
Characteristic Value Field	EntityCharacteristicValue		
Relationship Description			
Notes:	Indicate the subject areas where common assessments have been developed and implemented during the school year.		
List of Values Offered Under Common Assessments	<b>PoP Offered Programs ID</b>	<b>PoP Offered Programs Value</b>	
	1	Reading	
	2	Writing	
	3	Mathematics	
	4	Social Studies/History	
	5	Science	
	6	Physical Education	
	7	Technology	
	8	Fine Arts	
	9	Other	

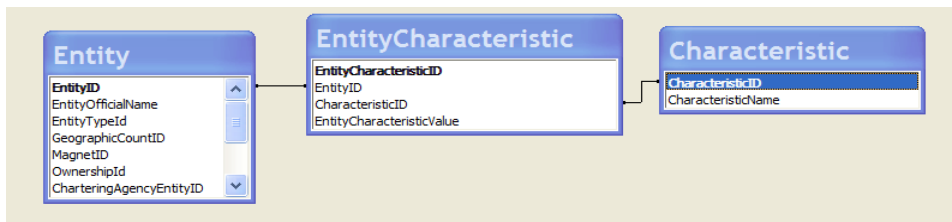


## 17.Common Name

Description:	This field is the commonly used (shortened form) name of the entity. <b>The name is used for the District Entity Types only.</b>
Characteristic ID	107
Data Type:	1: Text (numbers and letters)
Field Restriction/Rule	
Characteristic Source Table	Entity
Characteristic Value Field	Entity Common Name
Relationship Description	
Notes:	For example, “Royal Oak” is the commonly used name of the School District of the City of Royal Oak. This common name is assigned by CEPI.

## 18.Community Eligibility Provision

Description:	This field provides schools in high-poverty areas a means of sharing with the USDA the cost of providing free breakfast and lunch to all students without applications.
Characteristic ID	359
Data Type:	11: Yes / No (or True False, or Boolean)
Field Restriction/Rule	
Characteristic Source Table	EntityCharacteristic
Characteristic Value Field	EntityCharacteristicValue
Relationship Description	
Notes:	This characteristic is set by the Michigan Department of Education. Note: Name changed in 2015 from ‘Community Eligibility Option’ to ‘Community Eligibility Provision’.



**19.Contract**

Description:	The agreement between the chartering agency and the charter school (public school academy or academies).
Characteristic ID	160
Data Type:	12: Button
Field Restriction/Rule	
Characteristic Source Table	EntityContract
Characteristic Value Field	EntityContract ID
Relationship Description	
Notes:	This characteristic is managed by MDE/OSI-PSA.

**20.Contract Effective Date**

Description:	The date that the contract amendment for the Public School Academy was signed.
Characteristic ID	362
Data Type:	7:Date (Only)
Field Restriction/Rule	
Characteristic Source Table	EntityCharacteristic
Characteristic Value Field	Contract Effective Date
Relationship Description	
Notes:	This characteristic is set by MDE/OSI-PSA

**21.County Code**

Description:	This is the official state-assigned two-digit code number denoting the physical county location of the entity.
Characteristic ID	104
Data Type:	4: Whole Number (integer)
Field Restriction/Rule	
Characteristic Source Table	Entity
Characteristic Value Field	County ID
Relationship Description	
Notes:	

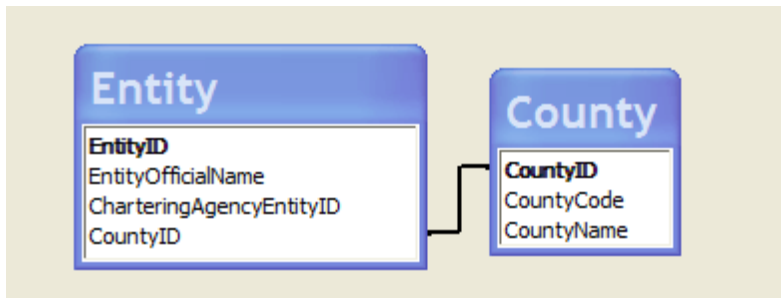
**County:**

The County table holds the data for counties and also a flag to indicate if it is an Upper Peninsula county.

County ID	County Code	County Name	ISUPCounty
1	01	Alcona	FALSE
2	02	Alger	TRUE
3	03	Allegan	FALSE
4	04	Alpena	FALSE
5	05	Antrim	FALSE
6	06	Arenac	FALSE
7	07	Baraga	FALSE
8	08	Barry	FALSE
9	09	Bay	FALSE

10	10	Benzie	FALSE
11	11	Berrien	FALSE
12	12	Branch	FALSE
13	13	Calhoun	FALSE
14	14	Cass	FALSE
15	15	Charlevoix	FALSE
16	16	Cheboygan	FALSE
17	17	Chippewa	TRUE
18	18	Clare	FALSE
19	19	Clinton	FALSE
20	20	Crawford	FALSE
21	21	Delta	TRUE
22	22	Dickinson	TRUE
23	23	Eaton	FALSE
24	24	Emmet	FALSE
25	25	Genesee	FALSE
26	26	Gladwin	FALSE
27	27	Gogebic	TRUE
28	28	Grand Traverse	FALSE
29	29	Gratiot	FALSE
30	30	Hillsdale	FALSE
31	31	Houghton	TRUE
32	32	Huron	FALSE
33	33	Ingham	FALSE
34	34	Ionia	FALSE
35	35	Iosco	FALSE
36	36	Iron	TRUE
37	37	Isabella	FALSE
38	38	Jackson	FALSE
39	39	Kalamazoo	FALSE
40	40	Kalkaska	FALSE
41	41	Kent	FALSE
42	42	Keweenaw	TRUE
43	43	Lake	FALSE
44	44	Lapeer	FALSE
45	45	Leelanau	FALSE
46	46	Lenawee	FALSE
47	47	Livingston	FALSE
48	48	Luce	TRUE
49	49	Mackinac	TRUE
50	50	Macomb	FALSE
51	51	Manistee	FALSE
52	52	Marquette	TRUE
53	53	Mason	FALSE
54	54	Mecosta	FALSE
55	55	Menominee	TRUE
56	56	Midland	FALSE
57	57	Missaukee	FALSE

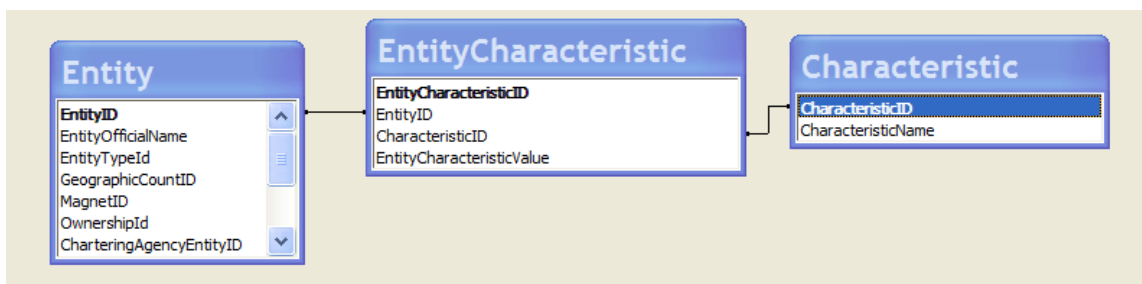
58	58	Monroe	FALSE
59	59	Montcalm	FALSE
60	60	Montmorency	FALSE
61	61	Muskegon	FALSE
62	62	Newaygo	FALSE
63	63	Oakland	FALSE
64	64	Oceana	FALSE
65	65	Ogemaw	FALSE
66	66	Ontonagon	TRUE
67	67	Osceola	FALSE
68	68	Oscoda	FALSE
69	69	Otsego	FALSE
70	70	Ottawa	FALSE
71	71	Presque Isle	FALSE
72	72	Roscommon	FALSE
73	73	Saginaw	FALSE
74	74	St. Clair	FALSE
75	75	St. Joseph	FALSE
76	76	Sanilac	FALSE
77	77	Schoolcraft	TRUE
78	78	Shiawassee	FALSE
79	79	Tuscola	FALSE
80	80	Van Buren	FALSE
81	81	Washtenaw	FALSE
82	82	Wayne	FALSE
83	83	Wexford	FALSE
84	84	State Of Michigan	FALSE



## 22.CTE

Description:	Career and Technical Education Services.
Characteristic ID	264
Data Type:	11: Yes/No (or True/False, or Boolean)
Field Restriction/Rule	
Characteristic Source Table	Entity Characteristic
Characteristic Value Field	CTE
Relationship Description	

Notes:	This characteristic is set by the MDE/OCTE. This characteristic is an indication that the entity offers career and technical educational services as recognized by the Office of Career and Technical Education at the Michigan Department of Education
--------	---

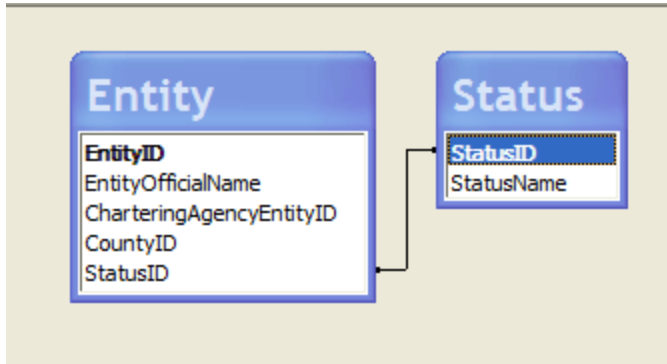


## 23.Current Status of Entity

Description:	This characteristic denotes the open/closed status of the entity.		
Characteristic ID	126		
Data Type:	6: List of Values (Choose from List). Only one status ID is stored.		
Look-Up Table for List of Values	Status		
List of Values From Status Table	<b>Status ID</b>	<b>Status Code</b>	<b>Status Name</b>
	1	01	Open – Active
	2	02	Open – Pending
	7	07	Open – Under Construction/Remodeling
	8	08	Open – Vacant /Empty
	10	10	Close – Pending
	99	99	Closed
Value Description	<p><b><u>Open – Active:</u></b> The entity is open and in operation.</p> <p><b><u>Open – Pending:</u></b> Entity code has been assigned; the entity is scheduled to open at a future date.</p> <p><b><u>Open – Under Construction/Remodeling:</u></b> The entity is open or expected to reopen after completion of the construction or remodeling; the original code remains open.</p> <p><b><u>Open – Vacant /Empty:</u></b> The entity is not currently in use, but the owner (school district) still reports on the entity.</p> <p><b><u>Close – Pending:</u></b> The entity is expected to close and has a transaction pending for a future date.</p> <p><b><u>Closed:</u></b> The entity is closed.</p>		
Characteristic Source Table	Entity		
Characteristic Value Field	Status ID		

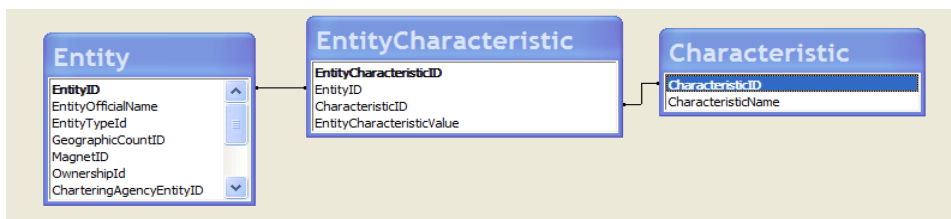


Relationship Description	An entity can have only one Status ID.
Notes:	



## 24.Data Universal Numbering System (DUNS) Name

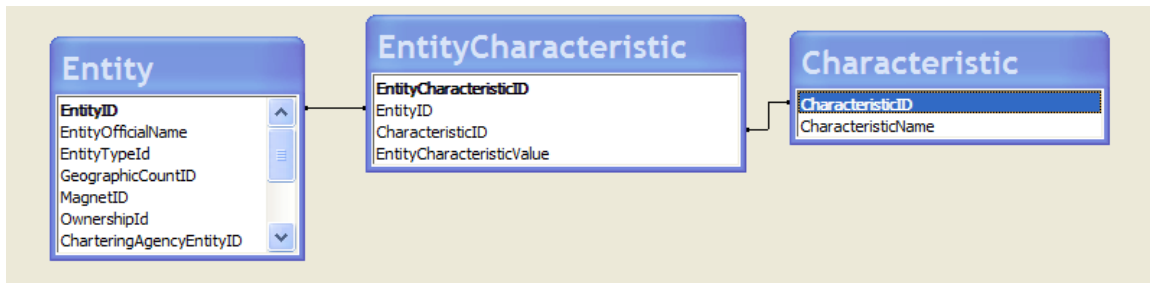
Description:	The Data Universal Numbering System (DUNS) Name is a unique name text field identifier.
Characteristic ID	369
Data Type:	1: Text (numbers and letters)
Field Restriction/Rule	
Characteristic Source Table	Entity Characteristic
Characteristic Value Field	Data Universal Numbering System (DUNS) Name
Relationship Description	
Notes:	It is a tool of the federal government to track how federal money is distributed. Most organizations that have applied to the federal government for a grant already have DUNS names.



## 25.Data Universal Numbering System (DUNS) Number

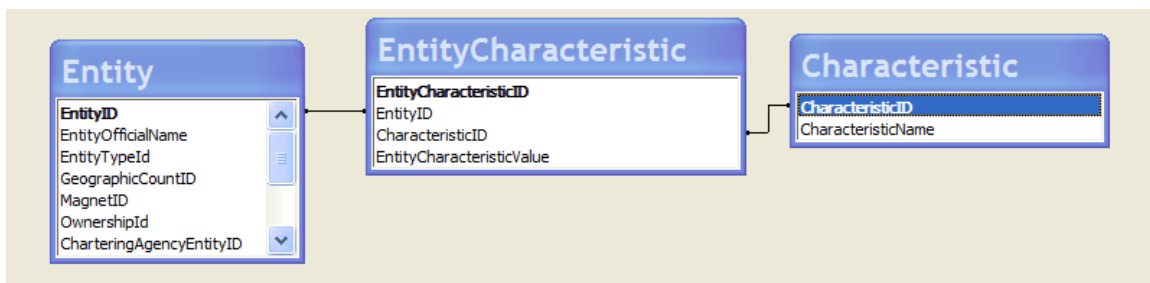
Description:	The Data Universal Numbering System (DUNS) Number is a unique, nine-digit identifier (numbers only, no characters or letters).
Characteristic ID	330
Data Type:	3: Numeric Text (can have leading zeros)

Field Restriction/Rule	
Characteristic Source Table	EntityCharacteristic
Characteristic Value Field	Data Universal Numbering System (DUNS) Number
Relationship Description	
Notes:	It is a tool of the federal government to track how federal money is distributed. Most organizations that have applied to the federal government for a grant already have DUNS numbers.



## 26.Date of Assignment to the EAS

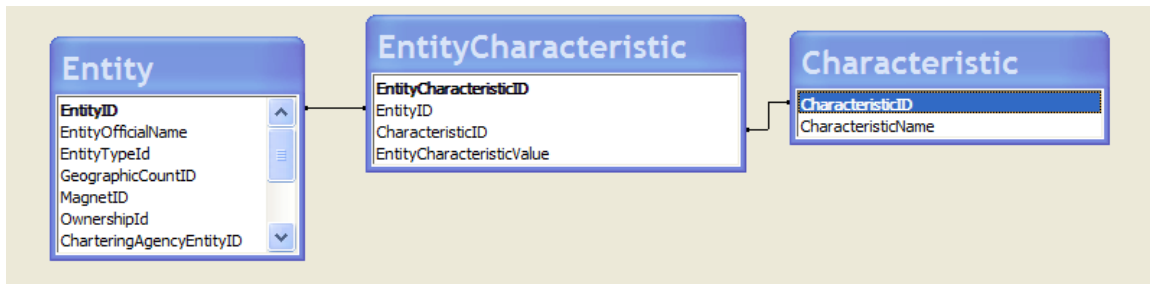
Description:	Date of Assignment to the EAS
Characteristic ID	354
Data Type:	7: Date (only)
Field Restriction/Rule	
Characteristic Source Table	EntityCharacteristic
Characteristic Value Field	EntityCharacteristicValue
Relationship Description	
Notes:	This is the date that a school is assigned to the Education Achievement System (84060).



## 27.Date of Exit from EAS

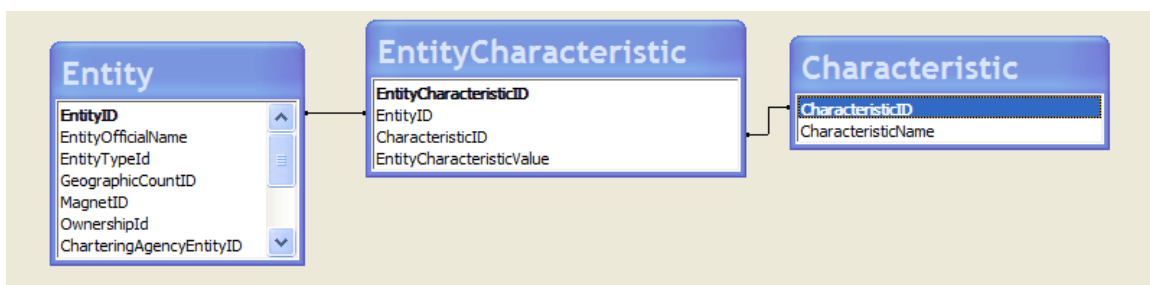
Description:	Date of Exit from EAS district.
Characteristic ID	355
Data Type:	7: Date (only)
Field Restriction/Rule	
Characteristic Source Table	EntityCharacteristic
Characteristic Value Field	EntityCharacteristicValue

Relationship Description	
Notes:	This is the date that the school exits from the Education Achievement System (84060).



## 28. Do Not Assess

Description:	This flag will be set by the Office of Educational Assessment and Accountability (OEAA) for entities that are not to have assessments sent to them.
Characteristic ID	138
Data Type:	11: Yes/No (or True/False, or Boolean)
Field Restriction/Rule	
Characteristic Source Table	EntityCharacteristic
Characteristic Value Field	Do Not Assess
Relationship Description	
Notes:	This is set by MDE/Office of Educational Assessment and Accountability.



## 29. Early Childhood Program Participation

Description:	The entity authorized user designates one or more Early Childhood Programs in which the entity participates:
Characteristic ID	145
Data Type:	1: Text (numbers and letters)
Field Restriction/Rule	
Characteristic Source Table	EntityProgram
Characteristic Value Field	Program ID

Relationship Description	
Notes:	<p>Head Start (HS): Children 3 through 5 years of age served in school districts by local grantees or delegates of the federal Head Start program. Intended to serve children whose family income is at or below federal poverty guidelines.</p> <p>Child Care (CCare): Children birth-to-kindergarten ages gain entry into a classroom program provided through a regular or community education program. Parents pay tuition to enroll their children; child-care reimbursement may be provided by the Department of Human Services or scholarships.</p> <p>Title I Preschool (TIPre): Program for children who are not yet age-eligible for kindergarten in districts that provide services utilizing Title I, Part A of the Elementary and Secondary Education Act (ESEA), as long as they follow current rules for preschool services under Title I.</p> <p>Even Start (ES): Children birth to kindergarten ages and parents gain entry into programs that integrate early childhood education, adult literacy or adult basic education, and parenting education into a unified family literacy program. Funding is through Part B (subpart 3) of Title I of the Elementary and Secondary Education Act, as amended by the No Child Left Behind Act.</p> <p>Great Start Readiness Program (GSRP): Center-based preschool or home-based GSRP services for children who are the age of 4 by December 1 and also for preschool-age children in programs for 4-year-olds who may be at risk of school failure. Each child must have two of the 25 identified risk factors; more than 50 percent of the children must be low income. Funded under the State School Aid Act, Section 32d, 37-40 or through a competitive Great Start Readiness Program grant.</p> <p>Great Parents Great Start (GPGS): Children birth to age 5 whose parents are receiving intensive parenting services through intermediate school district activities. Funded under the State School Aid Act, Section 32j.</p> <p>Early On<sup>®</sup>/Special Education (Birth-Age 3) (EOSE 0-3): Both Michigan Special Education Services and Part C of the Individuals with Disabilities Education Act. The child is between the ages of birth and 3 years, and has been identified as eligible for services under one of the categories defined in the Michigan Administrative Rules for Special Education and Part C of Individuals with Disabilities Education Act.</p> <p>Early On<sup>®</sup> (Birth-Age 3) (EO 0-3): Part C of Individuals with Disabilities Education Act only. The child is between the ages of birth and 3 years and has been identified as eligible for services</p>

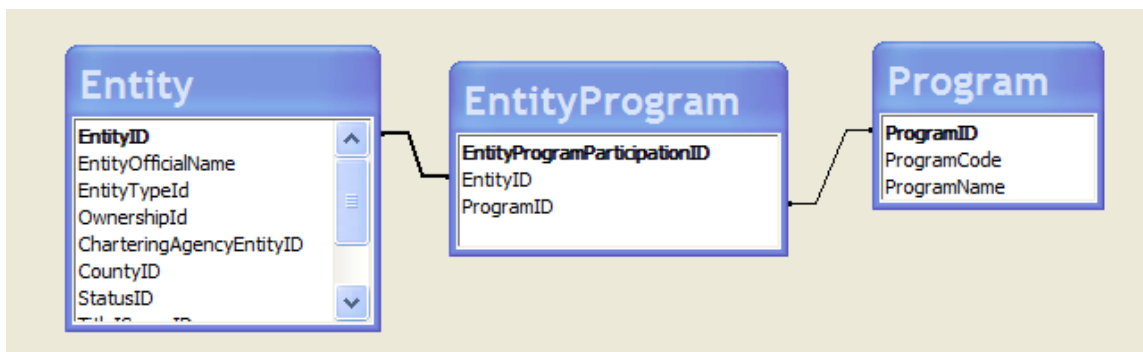
	<p>because of a developmental delay or an established condition which has a high probability of developing a delay, as defined in the Michigan Early-On® (Part C of Individuals with Disabilities Education Act) Eligibility Criteria. The developmental delay has not been identified as meeting the eligibility criteria of special education.</p> <p>Early Childhood Special Education (Ages 3-6) (ECSE 3-6): Support for children ages 3 through 5 years of age who have a disability. Eligible children must be determined by an individualized education program (IEP) team or a hearing office to have one or more of the impairments that necessitates special education or related services or both.</p> <p>Tuition-Based Pre-School (Tuit-B Pre): Children birth-to-kindergarten gain entry into a classroom program provided through a regular or community education program. Parents pay tuition to enroll their children; child-care reimbursement may be provided by the Department of Human Services or scholarships.</p> <p>Ages 0-3 Secondary Prevention (0-3SecPrev): Children and parents receiving services that are designed to foster positive parenting skills, improve parent/child interaction, promote access to needed community services, increase local capacity to serve families at risk, improve school readiness, and support healthy family environments that discourage alcohol, tobacco, and other drug use. Managed by the Children's Trust Fund. Interagency funding, including Section 32c of the State School Aid Act.</p> <p>Early Head Start (EHS): Children from birth to age three served in school districts by local grantees of the federal Head Start program.</p> <p>Other (Other): Other district-sponsored programs not defined above. Free, comprehensive programs not operated with state or federal funds.</p>
--	---

### Program

The details of a program are defined in this table.

Program ID	Program Code	Program Name
1	HS	Head Start
2	CCare	Child Care
3	TIPre	Title I Preschool
4	ES	Even Start
5	GSRP	Great Start Readiness Program (GSRP)
6	GPGS	Great Parents, Great Start
7	EOSE 0-3	Early On®/Special Education (Birth - Age 3)
8	EO 0-3	Early On® (Birth - Age 3)

9	ECSE 3-6	Early Childhood Special Education (Ages 3-6)
10	OSTime	Out-of-School Time Programs/Services
11	21CCL	21st Century Community Learning Centers
12	Tuit	Tuition-Based Before- and/or After-School Program
13	BSAS	Other Before- and/or After-School Program
14	Tuit-B Pre	Tuition-Based Pre-School
15	0-3SecPrev	Ages 0-3 Secondary Prevention
16	EHS	Early Head Start
17	Other	Other



### 30. Early Childhood Program Participation (Summary)

Description:	This is a summary of Early Childhood Program Participation settings offered by an individual entity or a group of entities within a parent entity.
Characteristic ID	329
Data Type:	1: Text (numbers and letters)
Field Restriction/Rule	
Characteristic Source Table	Entity
Characteristic Value Field	EarlyChildhoodProgramList
Relationship Description	
Notes:	<p>This value is stored as comma-separated. Example 0-3SecPrev,ECSE 3-6,EO 0-3,EOSE 0-3,GPGS,GSRP,HS,Tuit-B Pre</p> <p>-----</p> <p>This characteristic is derived by the system from the checked Early Childhood Program Participation settings. This characteristic can have multiple values.</p> <p>Head Start (HS): Children 3 through 5 years of age served in school districts by local grantees or delegates of the federal Head Start program. Intended to serve children whose family income is at or below federal poverty guidelines.</p> <p>Child Care (CCare): Children birth-to-kindergarten ages gain entry into a classroom program provided through a regular or community education program. Parents pay tuition to enroll</p>

	<p>their children; child-care reimbursement may be provided by the Department of Human Services or scholarships.</p> <p>Title I Preschool (TIPre): Program for children who are not yet age-eligible for kindergarten in districts that provide services utilizing Title I, Part A of the Elementary and Secondary Education Act (ESEA), as long as they follow current rules for preschool services under Title I.</p> <p>Even Start (ES): Children birth to kindergarten ages and parents gain entry into programs that integrate early childhood education, adult literacy or adult basic education, and parenting education into a unified family literacy program. Funding is through Part B (subpart 3) of Title I of the Elementary and Secondary Education Act, as amended by the No Child Left Behind Act.</p> <p>Great Start Readiness Program (GSRP): Center-based preschool or home-based GSRP services for children the age of 4 by December 1 and also preschool-age children in programs for 4-year-olds who may be at risk of school failure. Each child must have two of the 25 identified risk factors; more than 50 percent of the children must be low income. Funded under the State School Aid Act, Section 32d, 37-40 or through a competitive Great Start Readiness Program grant.</p> <p>Great Parents Great Start (GPGS): Children birth to age 5 whose parents are receiving intensive parenting services through intermediate school district activities. Funded under the State School Aid Act, Section 32j.</p> <p>Early On<sup>®</sup>/Special Education (Birth-Age3) (EOSE 0-3): Both Michigan Special Education Services and Part C of the Individuals with Disabilities Education Act. The child is between the ages of birth and 3 years, and has been identified as eligible for services under one of the categories defined in the Michigan Administrative Rules for Special Education and Part C of the Individuals with Disabilities Education Act.</p> <p>Early On<sup>®</sup> (Birth-Age 3) (EO 0-3): Part C of the Individuals with Disabilities Education Act only. The child is between the ages of birth and 3 years and has been identified as eligible for services because of a developmental delay or an established condition which has a high probability of developing a delay, as defined in the Michigan Early-On<sup>®</sup> (Part C of the Individuals with Disabilities Education Act) Eligibility Criteria. The developmental delay has not been identified as meeting the eligibility criteria of special education.</p> <p>Early Childhood Special Education (Ages 3-6) (ECSE 3-6): Support for children ages 3 through 5 years of age who have a</p>
--	--

	<p>disability. Eligible children must be determined by an individualized education program (IEP) team or a hearing office to have one or more of the impairments that necessitates special education or related services or both.</p> <p>Tuition-Based Pre-School (Tuit-B Pre): Children birth-to-kindergarten ages gain entry into a classroom program provided through a regular or community education program. Parents pay tuition to enroll their children; child-care reimbursement may be provided by Human Services or scholarships.</p> <p>Ages 0-3 Secondary Prevention (0-3SecPrev): Children and parents are receiving services that are designed to foster positive parenting skills, improve parent/child interaction, promote access to needed community services, increase local capacity to serve families at risk, improve school readiness, and support healthy family environments that discourage alcohol, tobacco and other drug use. Managed by the Children's Trust Fund. Interagency funding, including Section 32c of the State School Aid Act.</p> <p>Early Head Start (EHS): Children from birth to age three served in school districts by local grantees of the federal Head Start program.</p> <p>Other (Other): Other district-sponsored programs not defined above. Free, comprehensive programs not operated with state or federal funds.</p>
--	---

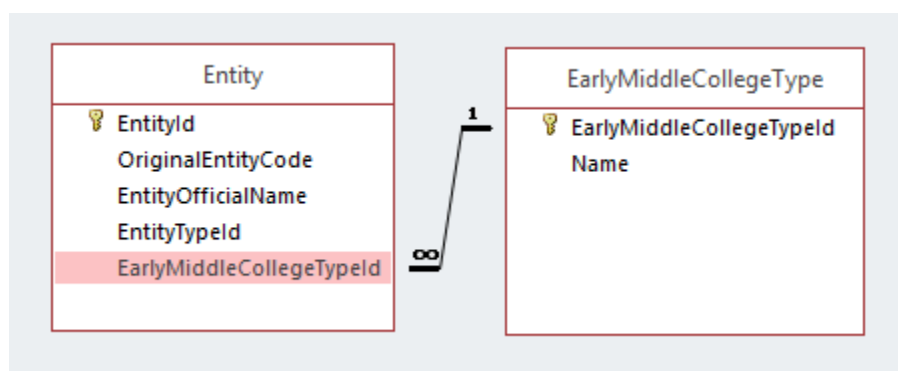
### 31.Early/Middle College

Description:	"Early college high school" or "middle college means a public high school designed to allow a pupil to earn a high school diploma and an associate degree or up to two years of transferable college credits. (R 388.152)
Characteristic ID	335
Data Type:	11: Yes/No (or True/False, or Boolean)
Field Restriction/Rule	
Characteristic Source Table	EntityCharacteristic
Characteristic Value Field	
Relationship Description	
Notes:	When the Michigan Department of Education, Office of Career and Technical Education (MDE/OCTE) approves an Early/Middle College, this entity is approved by CEPI for addition to the EEM. It may or may not be a Shared Educational Entity (SEE) with member districts. The characteristic can only be changed by an EEM State Administrator or DIT Administrator.



### 32. Early Middle College Type

Description:	Early/Middle College: “Early college high school” or “middle college” means a public high school designed to allow a pupil to earn a high school diploma and an associate degree or up to two years of transferable college credits. (R 388.152) An entity is designated as an Early/Middle College in the EEM after being approved as such by the Michigan Department of Education.									
Characteristic ID	370									
Data Type:	List of Values (choose from list)									
Field Restriction/Rule										
Characteristic Source Table	Entity									
Characteristic Value Field	Name									
Relationship Description										
Notes:	<div>Early/Middle College: “Early college high school” or “middle college” means a public high school designed to allow a pupil to earn a high school diploma and an associate degree or up to two years of transferable college credits. (R 388.152) An entity is designated as an Early/Middle College in the EEM after being approved as such by the Michigan Department of Education.</div> <table><tr><th>EarlyMiddleCollegeTypeid</th><th>Name</th></tr><tr><td>1</td><td>Not an early middle college</td></tr><tr><td>2</td><td>Early middle college</td></tr><tr><td>3</td><td>Early middle college program</td></tr></table>		EarlyMiddleCollegeTypeid	Name	1	Not an early middle college	2	Early middle college	3	Early middle college program
EarlyMiddleCollegeTypeid	Name									
1	Not an early middle college									
2	Early middle college									
3	Early middle college program									



### 33. EDEN Notification Flag

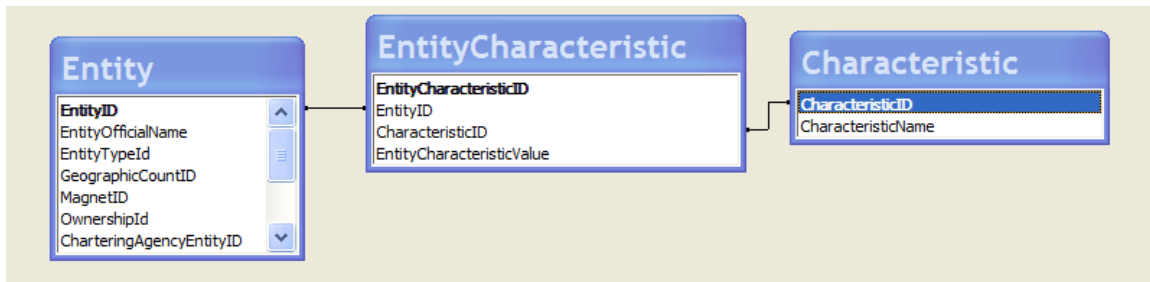
Description:	When EDEN Notification flag is checked, the details are entered.
Characteristic ID	334
Data Type:	10: Long Text (over 255 characters)
Field Restriction/Rule	
Characteristic Source Table	EntityCharacteristic
Characteristic Value Field	EDEN Notification Details
Relationship Description	
Notes:	When the EDEN Notification box is checked by an individual with a role with permissions, the individual with the same role

	can add details to this box. This characteristic is Read-Only for CEPI Analysts, CEPI Customer Support and Change/Approve for EDEN/CCD Manager (Carol Jones at CEPI), DIT/State Administrator, and State Approver. The maximum length for this characteristic is 255.
--	---

### 34.EDEN Notification Details

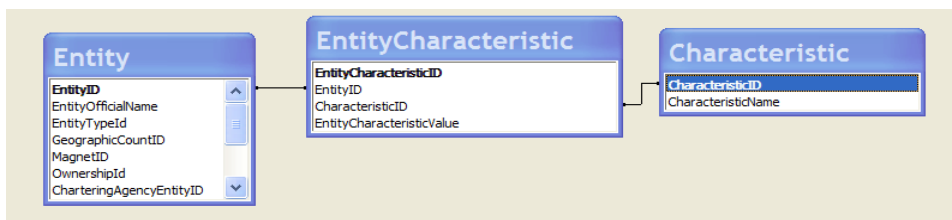
Description:	When EDEN Notification flag is checked, the details are entered.
Characteristic ID	334
Data Type:	10: Long Text (over 255 characters)
Field Restriction/Rule	
Characteristic Source Table	EntityCharacteristic
Characteristic Value Field	EDEN Notification Details
Relationship Description	
Notes:	When the EDEN Notification box is checked by an individual with a role with permissions, the individual with the same role can add details to this box. This characteristic is Read-Only for CEPI Analysts, CEPI Customer Support and Change/Approve for EDEN/CCD Manager (Carol Jones at CEPI), DIT/State Administrator, and State Approver. The maximum length for this characteristic is 255.

EDEN Notification Flag



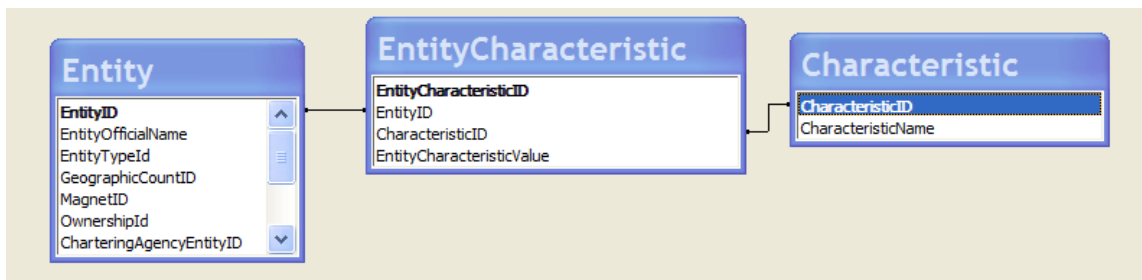
### 35.Education Management Organization

Description:	This is the for-profit or nonprofit corporation hired to manage operation of a Public School Academy.
Characteristic ID	366
Data Type:	1: Text (numbers and letters)
Field Restriction/Rule	
Characteristic Source Table	Entity Characteristic
Characteristic Value Field	EntityCharacteristicValue
Relationship Description	
Notes:	Acceptable values: corporate name or none. These data are provided by the MDE/OSI, PSA program office.



### 36. Education Service Provider Name

Description:	This is the for-profit or nonprofit corporation hired to operate all or part of a public school academy.
Characteristic ID	151
Data Type:	1: Text (numbers and letters)
Field Restriction/Rule	
Characteristic Source Table	EntityCharacteristic
Characteristic Value Field	Education Service Provider Name
Relationship Description	
Notes:	Acceptable values: corporate name or none. These data are provided by the MDE/OSI, PSA program office.



### 37. Educational Setting Button

Description:	This field identifies the educational setting(s) for which this entity is authorized to provide instruction and actually provides instruction.
Characteristic ID	110
Data Type:	
Field Restriction/Rule	
Characteristic Source Table	EntityEducationalSetting
Characteristic Value Field	EducationalSettingID
Relationship Description	
Notes:	At least one setting must be chosen, but all that apply should be selected. This characteristic can have multiple values (both actual and authorized). Selectable values: General Education (GenEd): Grades K-12. A public elementary/secondary school that does NOT focus primarily on

	<p>vocational, special or alternative education, although it may provide these programs in addition to a regular curriculum.</p> <p>--</p> <p>Pre-Kindergarten (PK): A national technical term for a state, local or privately funded preschool program for children one or two years before kindergarten entry. Pre-K associated with ISD/LEA districts must be reported in EDEN.</p> <p>--</p> <p>Alternative Education (Alt): An entity that addresses the needs of students that typically cannot be met in a regular school program. The entity provides nontraditional education; serves as an adjunct to a regular school; and falls outside the categories of regular, special education or vocational education.</p> <p>--</p> <p>Special Education (SpecEd): "Special education means specially designed instruction, at no cost to the parents, to meet the unique educational needs of the student with a disability and to develop the student's maximum potential. Special education includes instructional services defined in R 340.1701b(a) and related services." (MARSE R 340.1701c(c) (Sheryl Diamond, MDE OSE-EIS, diamonds@michigan.gov))</p> <p>--</p> <p>Special Education Center Program (SpecEdCtPr): MDE: State School Aid Act, 388.1606, Additional Definitions: Sec. 6.  (1) "Center program" means a program operated by a district or intermediate district for special education pupils from several districts in programs for pupils with autism spectrum disorder, pupils with severe cognitive impairment, pupils with moderate cognitive impairment, pupils with severe multiple impairments, pupils with hearing impairment, pupils with visual impairment, and pupils with physical impairment or other health impairment. Programs for pupils with emotional impairment housed in buildings that do not serve regular education pupils also qualify. Unless otherwise approved by the department, a center program either shall serve all constituent districts within an intermediate district or shall serve several districts with less than 50 percent of the pupils residing in the operating district. In addition, special education center program pupils placed part-time in noncenter programs to comply with the least restrictive environment provisions of section 612 of part B of the individuals with disabilities education act, 20 USC 1412, may be considered center program pupils for pupil accounting purposes for the time scheduled in either a center program or a noncenter program.</p> <p>--</p> <p>Adult Education (AdultEd): Instruction provided to adult students that is geared toward earning a high school diploma or GED, improving reading, writing, and/or math skills, learning English, earning citizenship, increasing family literacy and gaining or improving employment.</p> <p>--</p>
--	---

	<p>Licensed Boarding School (Boarding): Revised School Code, Section 3 (MCL 380.3(4)), "Boarding school" means a place accepting for board, care, and instruction 5 or more children under 16 years of age. Section 1335 (MCL 380.1335) requires that the State Board of Education shall license and regulate boarding schools. Boarding schools that meet the requirements of R. 340.481 et seq. of the Michigan Administrative Code are issued licenses by the Superintendent of Public Instruction.</p> <p>--</p> <p>Delinquent Institution (Delinq): A public or private residential facility that is operated primarily for the care of children who have been adjudicated as delinquent or in need of supervision. The Part D, Subpart 1, State Agency Neglected and Delinquent (N and D) program provides formula grants to SEAs for supplementary education services to help provide education continuity for children and youths in state-run institutions for juveniles and in adult correctional institutions so that these youths can make successful transitions to school or employment once they are released. Funds are allocated by formula to SEAs, which make subgrants to the state agencies responsible for educating neglected or delinquent children and youths. To be eligible for state N and D funds, juvenile institutions must provide 20 hours a week of instruction from nonfederal funds; adult correctional institutions must provide 15 hours. The Subpart 2 Local Education Agency Program requires each SEA to reserve from its Title I, Part A, allocation, funds generated by the number of children in locally operated institutions for delinquent youths. Funds are awarded to LEAs with high proportions of youths in local correctional facilities to support dropout prevention programs for at-risk youths. (Becky Pennington, MDE/OSI, penningtonb@mi.gov, 517-373-4006; Judy Thelen, MDE/OSI, thelenj8@mi.gov, 517-335-1266)</p> <p>--</p> <p>Neglected Institution (Negl): A public or private residential facility, other than a foster home, that is operated primarily for the care of children who have been committed to the institution, or voluntarily placed in the institution under applicable State law, due to abandonment, neglect, or death of their parents or guardians. The Part D, Subpart 1, State Agency Neglected and Delinquent (N and D) program provides formula grants to SEAs for supplementary education services to help provide education continuity for children and youths in state-run institutions for juveniles and in adult correctional institutions so that these youths can make successful transitions to school or employment once they are released. Funds are allocated by formula to SEAs, which make subgrants to the state agencies responsible for educating neglected or delinquent children and youths. To be eligible for state N and D funds, juvenile institutions must provide 20 hours a week of instruction from nonfederal funds; adult correctional institutions must provide 15 hours. The Subpart 2 Local Education Agency Program requires each SEA</p>
--	---

	<p>to reserve from its Title I, Part A, allocation, funds generated by the number of children in locally operated institutions for delinquent youths. Funds are awarded to LEAs with high proportions of youths in local correctional facilities to support dropout prevention programs for at-risk youths. (Becky Pennington, MDE/OSI, penningtonb@mi.gov, 517-373-4006; Judy Thelen, MDE/OSI, thelenj8@mi.gov, 517-335-1266)</p> <p>--</p> <p><b>Residential Child Care Institution (RCCI) or Youth Home (RCCI):</b> A child-care facility which provides 24-hour care. These are residences for neglected or delinquent children. In the case of the Michigan Department of Education, Office of School Improvement, these are identified as those that participate in the National School Lunch Program (NSLP). Those that do not participate may/may not be included in the EEM. Some RCCIs are schools or programs, run by an LEA or ISD. Some are classified in the EEM as Other Schools or Programs, not affiliated with an LEA or ISD.</p> <p>--</p> <p><b>Juvenile Detention Facility (JuvDtn):</b> A detention facility for juvenile delinquents who have been placed there by court order.</p> <p>--</p> <p><b>Less than 100% Virtual School (PTVirtual):</b> This school or university delivers part-time online education and training opportunities by providing convenient and cost-effective e-learning.</p> <p>--</p> <p><b>100% Virtual School (FTVirtual):</b> This school or university delivers full-time online education and training opportunities by providing convenient and cost-effective e-learning.</p> <p>--</p> <p><b>Non-School Child Nutrition Sponsor (ChildNutr):</b> These are agencies that participate in the USDA-sponsored Child Nutrition Programs (CACFP, SCSM, SFSP, TEFAP and CSFP) where formal instruction is not mandated.</p> <p>--</p> <p><b>Independent Private Grantee (IndPriGran):</b> This entity is not a part of a public school district but receives grant funds.</p> <p>--</p> <p><b>Locked-Down School (Locked):</b> This entity restricts student movement.</p> <p>--</p> <p><b>School-Based Health Center (HealthCtr):</b> School-Based Health Centers are comprehensive primary health care clinics operating on school property for children and youth. Clinical services are typically overseen by a health system, local health department, or federally qualified health center.</p> <p>--</p> <p><b>Family Resource Center (FamResCtr):</b> Department of Human Services (DHS) workers deliver services on-site at school.</p> <p>--</p>
--	--

	<p>Schools of Choice Offered (SchlChoice): The schools of choice provisions in Section 105 and 105c of the State School Aid Act are designed to allow local school districts to enroll nonresident students and count them in membership without having to obtain approval from the district of residence. Each local school district decides whether or not it will participate in schools of choice under Section 105 and/or 105c. A school can participate in 105 without participating in 105c. A school cannot participate in 105c without participating in 105.</p> <p>Web site: <a href="http://www.michigan.gov/mde/0,1607,7-140-6530_30334-106922--,00.html">http://www.michigan.gov/mde/0,1607,7-140-6530_30334-106922--,00.html</a></p> <p>--</p> <p>Faith-Based Institution (Faith): This characteristic denotes whether or not the entity has a religious aspect or focus.</p> <p>--</p> <p>Out-of-School Time Programs/Services (OSTime): Programs offered/paid for by school or district during the time regular school is not in session for K-12 students.</p> <p>--</p> <p>Tuition-Based Before- and/or After-School Program (Tuit): Programs for K-12 students offered at times school is not in session for which a fee is charged.</p> <p>--</p> <p>Other Before- and/or After-School Program (BSAS): Programs for K-12 students offered at times when school is not in session funded through sources other than the school/district and not fee-based.</p> <p>--</p> <p>21st Century Community Learning Centers (21CCL): The purpose is to create community learning centers for those times when school is not in session that provide K-12 students with activities designed to complement their regular academic program, as well as additional enrichment opportunities. Limited programming may also be provided for the families of enrolled students.</p>
--	---

### 38.Educational Settings Actual (Summary)

Description:	This is a summary of actual educational settings offered by an individual entity or a group of entities within a parent entity.
Characteristic ID	310
Data Type:	1: Text (numbers and letters)
Field Restriction/Rule	
Characteristic Source Table	Entity
Characteristic Value Field	ActualEducationalSettings
Relationship Description	
Notes:	<p>This value is stored as comma-separated. Example:  GenEd,SpecEd,SpecEdCtPr,RCCI,JuvDtn,Locked  -----</p>

	<p>This characteristic is derived by the system from the checked actual educational settings. This characteristic can have multiple values. Selectable values:</p> <p>General Education (GenEd): Grades K-12. A public elementary/secondary school that does NOT focus primarily on vocational, special or alternative education, although it may provide these programs in addition to a regular curriculum.</p> <p>--</p> <p>Pre-Kindergarten (PK): A national technical term for a state, local, or privately funded preschool program for children one or two years before kindergarten entry. Pre-K associated with ISD/LEA districts must be reported in EDEN.</p> <p>--</p> <p>Alternative Education (Alt): An entity that addresses the needs of students that typically cannot be met in a regular school program. The entity provides nontraditional education; serves as an adjunct to a regular school; and falls outside the categories of regular, special education, or vocational education.</p> <p>--</p> <p>Special Education (SpecEd): "Special education means specially designed instruction, at no cost to the parents, to meet the unique educational needs of the student with a disability and to develop the student's maximum potential. Special education includes instructional services defined in R 340.1701b(a) and related services." (MARSE R 340.1701c(c) (Sheryl Diamond, MDE OSE-EIS, diamonds@michigan.gov))</p> <p>--</p> <p>Special Education Center Program (SpecEdCtPr): MDE: State School Aid Act, 388.1606, Additional Definitions: Sec. 6.  (1) "Center program" means a program operated by a district or intermediate district for special education pupils from several districts in programs for pupils with autism spectrum disorder, pupils with severe cognitive impairment, pupils with moderate cognitive impairment, pupils with severe multiple impairments, pupils with hearing impairment, pupils with visual impairment, and pupils with physical impairment or other health impairment. Programs for pupils with emotional impairment housed in buildings that do not serve regular education pupils also qualify. Unless otherwise approved by the department, a center program either shall serve all constituent districts within an intermediate district or shall serve several districts with less than 50% of the pupils residing in the operating district. In addition, special education center program pupils placed part-time in noncenter programs to comply with the least restrictive environment provisions of section 612 of part B of the individuals with disabilities education act, 20 USC 1412, may be considered center program pupils for pupil accounting purposes for the time scheduled in either a center program or a noncenter program.</p> <p>--</p> <p>Adult Education (AdultEd): Instruction provided to adult students that is geared toward earning a high school diploma or</p>
--	---



	<p>GED, improving reading, writing, and/or math skills, learning English, earning citizenship, increasing family literacy, and gaining or improving employment.</p> <p>--</p> <p>Licensed Boarding School (Boarding): Revised School Code, Section 3 (MCL 380.3(4)), "Boarding school" means a place accepting for board, care, and instruction 5 or more children under 16 years of age. Section 1335 (MCL 380.1335) requires that the State Board of Education shall license and regulate boarding schools. Boarding schools that meet the requirements of R. 340.481 et seq. of the Michigan Administrative Code are issued licenses by the Superintendent of Public Instruction.</p> <p>--</p> <p>Delinquent Institution (Delinq): A public or private residential facility that is operated primarily for the care of children who have been adjudicated as delinquent or in need of supervision. The Part D, Subpart 1, State Agency Neglected and Delinquent (N and D) program provides formula grants to SEAs for supplementary education services to help provide education continuity for children and youths in state-run institutions for juveniles and in adult correctional institutions so that these youths can make successful transitions to school or employment once they are released. Funds are allocated by formula to SEAs, which make subgrants to the state agencies responsible for educating neglected or delinquent children and youths. To be eligible for state N and D funds, juvenile institutions must provide 20 hours a week of instruction from nonfederal funds; adult correctional institutions must provide 15 hours. The Subpart 2 Local Education Agency Program requires each SEA to reserve from its Title I, Part A, allocation, funds generated by the number of children in locally operated institutions for delinquent youths. Funds are awarded to LEAs with high proportions of youths in local correctional facilities to support dropout prevention programs for at-risk youths. (Becky Pennington, MDE/OSI, penningtonb@mi.gov, 517-373-4006; Judy Thelen, MDE/OSI, thelenj8@mi.gov, 517-335-1266)</p> <p>--</p> <p>Neglected Institution (Negl): A public or private residential facility, other than a foster home, that is operated primarily for the care of children who have been committed to the institution, or voluntarily placed in the institution under applicable State law, due to abandonment, neglect, or death of their parents or guardians. The Part D, Subpart 1, State Agency Neglected and Delinquent (N and D) program provides formula grants to SEAs for supplementary education services to help provide education continuity for children and youths in state-run institutions for juveniles and in adult correctional institutions so that these youths can make successful transitions to school or employment once they are released. Funds are allocated by formula to SEAs, which make subgrants to the state agencies responsible for educating neglected or delinquent children and youths. To be</p>
--	--

	<p>eligible for state N and D funds, juvenile institutions must provide 20 hours a week of instruction from nonfederal funds; adult correctional institutions must provide 15 hours. The Subpart 2 Local Education Agency Program requires each SEA to reserve from its Title I, Part A, allocation, funds generated by the number of children in locally operated institutions for delinquent youths. Funds are awarded to LEAs with high proportions of youths in local correctional facilities to support dropout prevention programs for at-risk youths. (Becky Pennington, MDE/OSI, penningtonb@mi.gov, 517-373-4006; Judy Thelen, MDE/OSI, thelenj8@mi.gov, 517-335-1266)</p> <p>--</p> <p>Residential Child Care Institution (RCCI) or Youth Home (RCCI): A child caring facility which provides 24-hour care. These are residences for neglected or delinquent children. In the case of the Michigan Department of Education, Office of School Improvement, these are identified as those that participate in the National School Lunch Program (NSLP). Those that do not participate may/may not be included in the EEM. Some RCCIs are schools or programs, run by an LEA or ISD school district. Some are classified in the EEM as Other Schools or Programs, not affiliated with an LEA or ISD school district.</p> <p>--</p> <p>Juvenile Detention Facility (JuvDtn): A detention facility for juvenile delinquents who have been placed there by court order.</p> <p>--</p> <p>Less than 100% Virtual School (PTVirtual): This school or university delivers part-time online education and training opportunities by providing convenient and cost-effective e-learning.</p> <p>--</p> <p>100% Virtual School (FTVirtual): This school or university delivers full-time online education and training opportunities by providing convenient and cost-effective e-learning.</p> <p>--</p> <p>Non-School Child Nutrition Sponsor (ChildNutr): These are agencies that participate in the USDA sponsored Child Nutrition Programs (CACFP, SCSM, SFSP, TEFAP and CSFP) where formal instruction is not mandated.</p> <p>--</p> <p>Independent Private Grantee (IndPriGran): This entity is not a part of a public school district but receives grant funds.</p> <p>--</p> <p>Locked-Down School (Locked): This entity restricts student movement.</p> <p>--</p> <p>School-Based Health Center (HealthCtr): School-Based Health Centers are comprehensive primary health care clinics operating on school property for children and youth. Clinical services are typically overseen by a health system, local health department, or federally qualified health center.</p>
--	--

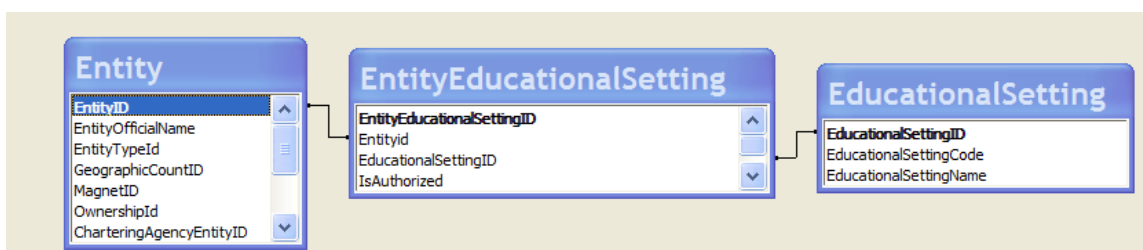
	<p>--</p> <p>Family Resource Center (FamResCtr): Department of Human Services (DHS) workers deliver services on-site at school.</p> <p>--</p> <p>Schools of Choice Offered (SchlChoice): The schools of choice provisions in Section 105 and 105c of the State School Aid Act are designed to allow local school districts to enroll nonresident students and count them in membership without having to obtain approval from the district of residence. Each local school district decides whether or not it will participate in schools of choice under Section 105 and/or 105c. A school can participate in 105 without participating in 105c. A school cannot participate in 105c without participating in 105.</p> <p>Web site: <a href="http://www.michigan.gov/mde/0,1607,7-140-6530_30334-106922--,00.html">http://www.michigan.gov/mde/0,1607,7-140-6530_30334-106922--,00.html</a></p> <p>--</p> <p>Faith-Based Institution (Faith): This characteristic denotes whether or not the entity has a religious aspect or focus.</p> <p>--</p> <p>Out-of-School Time Programs/Services (OSTime): Programs offered/paid for by school or district during the time regular school is not in session for K-12 students.</p> <p>--</p> <p>Tuition-Based Before- and/or After-School Program (Tuit): Programs for K-12 students offered at times school is not in session for which a fee is charged.</p> <p>--</p> <p>Other Before- and/or After-School Program (BSAS): Programs for K-12 students offered at times when school is not in session funded through sources other than the school/district and not fee-based.</p> <p>--</p> <p>21st Century Community Learning Centers (21CCL): The purpose is to create community learning centers for those times when school is not in session that provide K-12 students with activities designed to complement their regular academic program, as well as additional enrichment opportunities. Limited programming may also be provided for the families of enrolled students.</p>
--	---

**Educational Setting:**

The Educational Settings are defined in this table.

<b>Educational Setting ID</b>	<b>Educational Setting Code</b>	<b>Educational Setting Description</b>
1	GenEd	General Education
2	PK	Pre-Kindergarten
4	Alt	Alternative Education
5	SpecEd	Special Education

6	SpecEdCtPr	Special Education Center Program
7		Special Education Center
9	CTE	Career and Technical Education
10	NULL	Career and Technical Education Program
11	AdultEd	Adult Education
13	Boarding	Licensed Boarding School
14	Delinq	Delinquent Institution
15	Negl	Neglected Institution
16	RCCI	Residential Child Care Institution (RCCI) or Youth Home
17	JuvDtn	Juvenile Detention Facility
19	PTVirtual	Less than 100% Virtual School
20	FTVirtual	100% Virtual School
21	ChildNutr	Non-School Child Nutrition Sponsor
22	IndPriGran	Independent Private Grantee
24	Locked	Locked-down school
25	HealthCtr	School-based Health Center
26	FamResCtr	Family Resource Center
27	SchlChoice	Schools of Choice Offered
28	Faith	Faith-based Institution
29	OSTime	Out-of-School Time Programs/Services
30	Tuit	Tuition-Based Before- and/or After-School Programs
31	BSAS	Other Before- and/or After-School Programs
32	21CCL	21st Century Community Learning Centers



### 39.Educational Settings Authorized (Summary)

Description:	This is a summary of authorized educational settings offered by an individual entity or a group of entities within a parent entity.
Characteristic ID	309
Data Type:	1: Text (numbers and letters)
Field Restriction/Rule	
Characteristic Source Table	Entity
Characteristic Value Field	Authorized Educational Settings
Relationship Description	
Notes:	This value is stored as comma-separated. Example: GenEd,SpecEd,SpecEdCtPr,RCCI,JuvDtn,Locked -----

	<p>This characteristic is derived by the system from the checked authorized educational settings. This characteristic can have multiple values. Selectable values:</p> <p>General Education (GenEd): Grades K-12. A public elementary/secondary school that does NOT focus primarily on vocational, special or alternative education, although it may provide these programs in addition to a regular curriculum.</p> <p>--</p> <p>Pre-Kindergarten (PK): A national technical term for a state, local, or privately funded preschool program for children one or two years before kindergarten entry. Pre-K associated with ISD/LEA districts must be reported in EDEN.</p> <p>--</p> <p>Alternative Education (Alt): An entity that addresses the needs of students that typically cannot be met in a regular school program. The entity provides nontraditional education; serves as an adjunct to a regular school; and falls outside the categories of regular, special education, or vocational education.</p> <p>--</p> <p>Special Education (SpecEd): "Special education means specially designed instruction, at no cost to the parents, to meet the unique educational needs of the student with a disability and to develop the student's maximum potential. Special education includes instructional services defined in R 340.1701b(a) and related services." (MARSE R 340.1701c(c) (Sheryl Diamond, MDE OSE-EIS, diamonds@michigan.gov))</p> <p>--</p> <p>Special Education Center Program (SpecEdCtPr): MDE: State School Aid Act, 388.1606, Additional Definitions: Sec. 6.  (1) "Center program" means a program operated by a district or intermediate district for special education pupils from several districts in programs for pupils with autism spectrum disorder, pupils with severe cognitive impairment, pupils with moderate cognitive impairment, pupils with severe multiple impairments, pupils with hearing impairment, pupils with visual impairment, and pupils with physical impairment or other health impairment. Programs for pupils with emotional impairment housed in buildings that do not serve regular education pupils also qualify. Unless otherwise approved by the department, a center program either shall serve all constituent districts within an intermediate district or shall serve several districts with less than 50 percent of the pupils residing in the operating district. In addition, special education center program pupils placed part-time in noncenter programs to comply with the least restrictive environment provisions of section 612 of part B of the individuals with disabilities education act, 20 USC 1412, may be considered center program pupils for pupil accounting purposes for the time scheduled in either a center program or a noncenter program.</p> <p>--</p>
--	--

	<p>Adult Education (AdultEd): Instruction provided to adult students that is geared toward earning a high school diploma or GED, improving reading, writing, and/or math skills, learning English, earning citizenship, increasing family literacy, and gaining or improving employment.</p> <p>--</p> <p>Licensed Boarding School (Boarding): Revised School Code, Section 3 (MCL 380.3(4)), "Boarding school" means a place accepting for board, care, and instruction 5 or more children under 16 years of age. Section 1335 (MCL 380.1335) requires that the State Board of Education shall license and regulate boarding schools. Boarding schools that meet the requirements of R. 340.481 et seq. of the Michigan Administrative Code are issued licenses by the Superintendent of Public Instruction.</p> <p>--</p> <p>Delinquent Institution (Delinq): A public or private residential facility that is operated primarily for the care of children who have been adjudicated as delinquent or in need of supervision. The Part D, Subpart 1, State Agency Neglected and Delinquent (N and D) program provides formula grants to SEAs for supplementary education services to help provide education continuity for children and youths in state-run institutions for juveniles and in adult correctional institutions so that these youths can make successful transitions to school or employment once they are released. Funds are allocated by formula to SEAs, which make subgrants to the state agencies responsible for educating neglected or delinquent children and youths. To be eligible for state N and D funds, juvenile institutions must provide 20 hours a week of instruction from nonfederal funds; adult correctional institutions must provide 15 hours. The Subpart 2 Local Education Agency Program requires each SEA to reserve from its Title I, Part A, allocation, funds generated by the number of children in locally operated institutions for delinquent youths. Funds are awarded to LEAs with high proportions of youths in local correctional facilities to support dropout prevention programs for at-risk youths. (Becky Pennington, MDE/OSI, penningtonb@mi.gov, 517-373-4006; Judy Thelen, MDE/OSI, thelenj8@mi.gov, 517-335-1266)</p> <p>--</p> <p>Neglected Institution (Negl): A public or private residential facility, other than a foster home, that is operated primarily for the care of children who have been committed to the institution, or voluntarily placed in the institution under applicable State law, due to abandonment, neglect, or death of their parents or guardians. The Part D, Subpart 1, State Agency Neglected and Delinquent (N and D) program provides formula grants to SEAs for supplementary education services to help provide education continuity for children and youths in state-run institutions for juveniles and in adult correctional institutions so that these youths can make successful transitions to school or employment once they are released. Funds are allocated by formula to SEAs,</p>
--	---

	<p>which make subgrants to the state agencies responsible for educating neglected or delinquent children and youths. To be eligible for state N and D funds, juvenile institutions must provide 20 hours a week of instruction from nonfederal funds; adult correctional institutions must provide 15 hours. The Subpart 2 Local Education Agency Program requires each SEA to reserve from its Title I, Part A allocation funds generated by the number of children in locally operated institutions for delinquent youths. Funds are awarded to LEAs with high proportions of youths in local correctional facilities to support dropout prevention programs for at-risk youths. (Becky Pennington, MDE/OSI, penningtonb@mi.gov, 517-373-4006; Judy Thelen, MDE/OSI, thelenj8@mi.gov, 517-335-1266)</p> <p>--</p> <p>Residential Child Care Institution (RCCI) or Youth Home (RCCI): A child caring facility which provides 24-hour care. These are residences for neglected or delinquent children. In the case of the Michigan Department of Education, Office of School Improvement, these are identified as those that participate in the National School Lunch Program (NSLP). Those that do not participate may/may not be included in the EEM. Some RCCIs are schools or programs, run by an LEA or ISD. Some are classified in the EEM as Other Schools or Programs, not affiliated with an LEA or ISD.</p> <p>--</p> <p>Juvenile Detention Facility (JuvDtn): A detention facility for juvenile delinquents who have been placed there by court order.</p> <p>--</p> <p>Less than 100% Virtual School (PTVirtual): This school or university delivers part-time online education and training opportunities by providing convenient and cost-effective e-learning.</p> <p>--</p> <p>100% Virtual School (FTVirtual): This school or university delivers full-time online education and training opportunities by providing convenient and cost-effective e-learning.</p> <p>--</p> <p>Non-School Child Nutrition Sponsors (ChildNutr): These are agencies that participate in the USDA sponsored Child Nutrition Programs (CACFP, SCSM, SFSP, TEFAP and CSFP) where formal instruction is not mandated.</p> <p>--</p> <p>Independent Private Grantee (IndPriGran): This entity is not a part of a public school district but receives grant funds.</p> <p>--</p> <p>Locked-Down School (Locked): This entity restricts student movement.</p> <p>--</p> <p>School-Based Health Center (HealthCtr): School-Based Health Centers are comprehensive primary health care clinics operating on school property for children and youth. Clinical services are</p>
--	---

	<p>typically overseen by a health system, local health department, or federally qualified health center.</p> <p>--</p> <p>Family Resource Center (FamResCtr): Department of Human Services (DHS) workers deliver services on-site at school.</p> <p>--</p> <p>Schools of Choice Offered (SchlChoice): The schools of choice provisions in Section 105 and 105c of the State School Aid Act are designed to allow local school districts to enroll nonresident students and count them in membership without having to obtain approval from the district of residence. Each local school district decides whether or not it will participate in schools of choice under Section 105 and/or 105c. A school can participate in 105 without participating in 105c. A school cannot participate in 105c without participating in 105.</p> <p>Web site: <a href="http://www.michigan.gov/mde/0,1607,7-140-6530_30334-106922--,00.html">http://www.michigan.gov/mde/0,1607,7-140-6530_30334-106922--,00.html</a></p> <p>--</p> <p>Faith-Based Institution (Faith): This characteristic denotes whether or not the entity has a religious aspect or focus.</p> <p>--</p> <p>Out-of-School Time Programs/Services (OSTime): Programs offered/paid for by school or district during the time regular school is not in session for K-12 students.</p> <p>--</p> <p>Tuition-Based Before- and/or After-School Program (Tuit): Programs for K-12 students offered at times school is not in session for which a fee is charged.</p> <p>--</p> <p>Other Before- and/or After-School Program (BSAS): Programs for K-12 students offered at times when school is not in session funded through sources other than the school/district and not fee-based.</p> <p>--</p> <p>21st Century Community Learning Centers (21CCL): The purpose is to create community learning centers for those times when school is not in session that provide K-12 students with activities designed to complement their regular academic program, as well as additional enrichment opportunities. Limited programming may also be provided for the families of enrolled students.</p>
--	--

#### 40.E-Mail Address

Description:	This is the e-mail address for the entity or for a contact person.
Characteristic ID	156
Data Type:	1: Text (numbers and letters)
Field Restriction/Rule	
Characteristic Source Table	Entity
Characteristic Value Field	Main Email Address



Relationship Description	
Notes:	It is a required characteristic.

## 41.Entity Close Date

Description:	This characteristic is the actual closing date of the entity or the date the entity ceased to do business.
Characteristic ID	125
Data Type:	9: Date and Time
Field Restriction/Rule	
Characteristic Source Table	Entity
Characteristic Value Field	Close Date
Relationship Description	
Notes:	Where "12/31/1900" is displayed, this is a legacy value. Either the past historical data collection system did not collect the closing date, or this entity never opened after being added to the application. This was used as a default date for closing when the date was unknown, not collected or the entity never opened. The entity authorized user may request a closing of an entity using the closing date. The State Administrator or State Approver must approve this closing.

## 42.Entity Code

Description:	The entity code is an identification code assigned to entities in the Educational Entity Master.
Characteristic ID	244
Data Type:	1: Text (numbers and letters)
Field Restriction/Rule	
Characteristic Source Table	Entity
Characteristic Value Field	Original Entity Code
Relationship Description	
Notes:	<p>This code provides a foundation link among all educational data collection applications in Michigan. Some examples of entities that have an entity code:</p> <p>School:</p> <p>A public school is an administrative unit (not necessarily a physical building) that provides instruction to students. It is operated by a primarily publicly funded education entity Michigan Department of Education [MDE], Intermediate School District (ISD), Local Education Agency (LEA), Public School Academy (PSA) and has ALL of the following characteristics:</p> <ul style="list-style-type: none"> <li>• An administrator (principal) who reports directly to the entity's chief executive officer (i.e., superintendent).</li> <li>• Teachers responsible for educating a specific set of students</li> <li>• Students</li> <li>• Receives a state-issued Michigan School Report Card (The Michigan Department of Education annually makes a determination of Adequate Yearly Progress [AYP] for all public</li> </ul>

	<p>elementary, middle, and high schools in Michigan. AYP evaluates schools and school districts in the areas of academic achievement, participation in state assessment, graduation rate for high schools and student attendance for elementary and middle schools.)</p> <p>"School" for all other entities (State Agency, Nonpublic, Higher Education, Other) would be defined as: an administrative unit (not necessarily a physical building) that provides instruction to pupils and has the following characteristics:</p> <ul style="list-style-type: none"> <li>• Administrator</li> <li>• Teachers</li> <li>• Students</li> </ul> <p>Unique Education Provider:</p> <p>A unique education provider is not a school; however, it provides instructional services to children before kindergarten, supplemental instruction, or it provides support education to Pre-Kindergarten (Pre-K) through grade 12, or adult education services. Generally it has:</p> <ul style="list-style-type: none"> <li>• An administrator, supervisor, coordinator or director who reports to a principal or another administrator</li> <li>• Teachers who may have special endorsements beyond those normally required for Pre-K-12</li> <li>• Students who select to attend or are referred by another public agency/school</li> <li>• Students who are not necessarily in full-time attendance</li> <li>• The location does not administer these state assessments: MEAP, MME, MI-Access and/or ELPA, but may administer other state assessments.</li> <li>• The location does not offer a Michigan Merit diploma (if grades 9-12)</li> <li>• Supplements or is a primary legal entity receiving funds through MDE (i.e., Nonpublic School, Private School, Other State Agency, Higher Education Institution, Other Recipient of Funds through MDE).</li> </ul> <p>Non-Instructional Ancillary Facility:</p> <p>This entity does not provide instruction but is affiliated with the LEA, ISD, PSA, State, or Other entity and does get an entity code for reporting purposes. Examples: entities serving as a bus garage, transportation center, plant/maintenance facility, administrative support, food service, communications/media, sports/recreation, health services, family/community center,</p>
--	---

	<p>professional training center, agriscience/natural resources center, treatment center.</p> <p><b>Non-School Recipient:</b> This entity is not a school or a unique education provider, but receives monies of some kind through the Michigan Electronic Grants System (MEGS) [517-373-1806; MEGS@michigan.gov] or Cash Management System (CMS)[517-335-0534; MDE-cms@michigan.gov]. Examples: Community Action agencies, soup kitchens, independent day care centers.</p> <p><b>Colleges/Universities:</b> Degree-granting institutions - public two-year, public four-year, independent, tribally-controlled.</p>
--	--

### 43.Entity Grandparent

Description:	Top Entity in the Hierarchy of Entities								
Characteristic ID	316								
Data Type:	1: Text (numbers and letters)								
Field Restriction/Rule									
Characteristic Source Table	Entity								
Characteristic Value Field	EntityId								
Relationship Description	<p>Nested entity relationship For example, the following code will give the parent and the grandparent of Okemos High School Select a.EntityOfficialName, b.EntityOfficialName as parent, c.entityOfficialname as grandparent from Entity a, Entity b, Entity c, Entityrelationship as parenter, Entityrelationship grandparenter where a.entityid = parenter.entityid and b.entityid = parenter.parententityid and b.entityid = grandparenter.entityid and c.entityid = grandparenter.parententityid and a.entityid = 2020</p> <table><tr><th>Entity</th><th>Parent</th><th>Grandparent</th></tr><tr><td>Okemos High School</td><td>Okemos Public Schools</td><td>Ingham ISD</td></tr></table>			Entity	Parent	Grandparent	Okemos High School	Okemos Public Schools	Ingham ISD
Entity	Parent	Grandparent							
Okemos High School	Okemos Public Schools	Ingham ISD							
Notes:	In most cases, this characteristic will be the intermediate school district (ISD) that services the entity.								

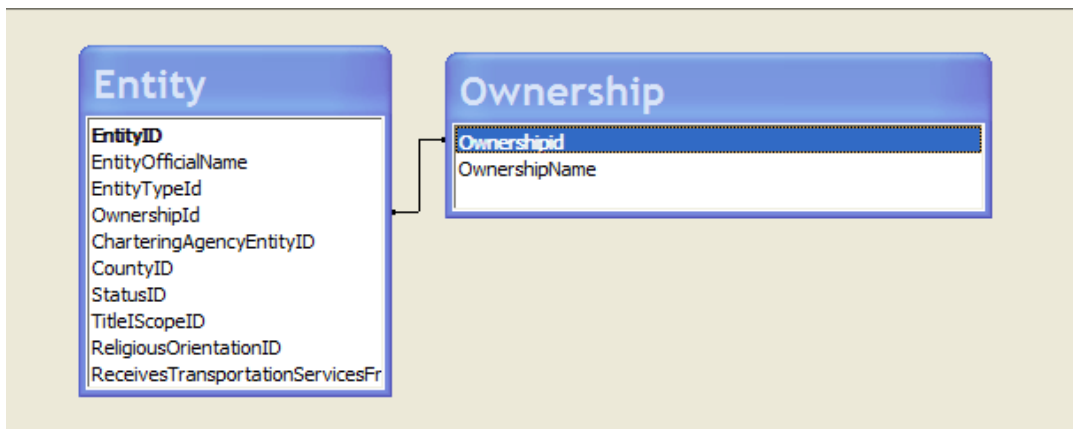
### 44.Entity Open Date

Description:	This characteristic denotes the actual opening date of the entity or when it begins to do business.
Characteristic ID	124
Data Type:	9: Date and Time
Field Restriction/Rule	
Characteristic Source Table	Entity

Characteristic Value Field	Open Date
Relationship Description	
Notes:	The entity authorized user enters this characteristic when requesting to add an entity. Where "01/01/1900" is displayed, this is a legacy value. The past historical data collection system did not always collect the opening date. This was used as a default date for opening when the date was unknown or not collected.

## 45.Entity Ownership

Description:	Describes the type of Ownership of an Entity	
Characteristic ID	127	
Data Type:	4: Whole Number (integer)	
Field Restriction/Rule		
Characteristic Source Table	Entity	
Characteristic Value Field	OwnershipId	
Look Up table for List of Values	Ownership	
Relationship Description		
Notes:	The entity authorized user chooses one from the list:	
	<b>Ownership Id</b>	<b>Ownership Name</b>
	1	Owned
	2	Commercially Leased/Rented
	3	Publicly Leased/Rented
	5	Non-Profit Leased/Rented
	6	Free
	7	Unknown
	8	Privately Leased/Rented

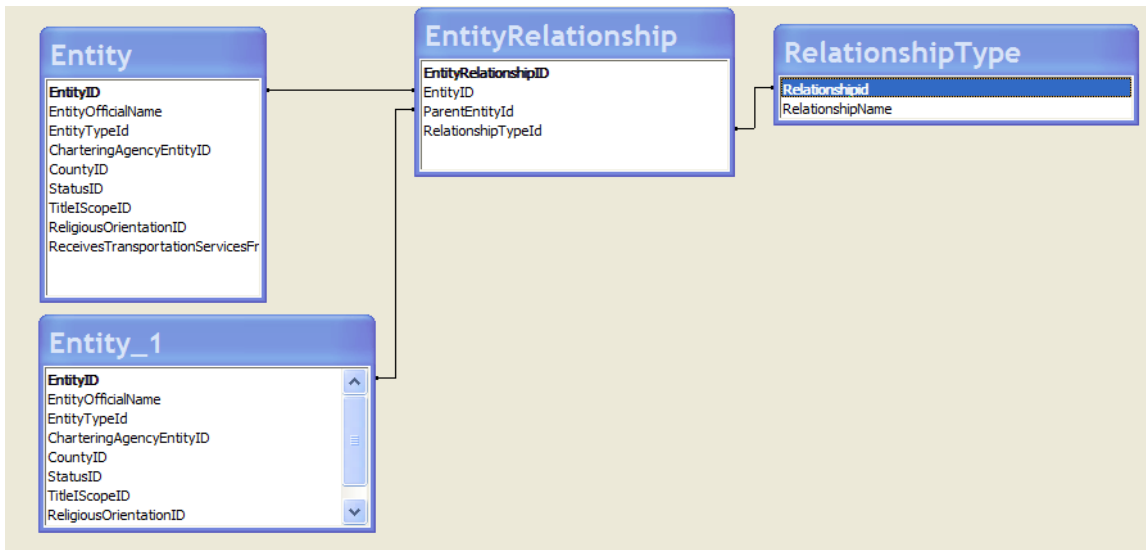


## 46.Entity Parent

Description:	Entity at a higher level in the Hierarchy of Entities
Characteristic ID	256
Data Type:	1:Text (numbers and letters)

Relationship Type ID	Relationship Name	Relationship Description
1	Belongs within	Enforces the standard hierarchy of educational entities. Example: An LEA school belongs within an LEA district which belongs within an ISD.
2	Geographically located within	Public school academies, nonpublic schools, unique education providers, and non-instructional ancillary facilities are geographically located within a local education agency (LEA) district.
Field Restriction/Rule		
Characteristic Source Table		EntityRelationship
Characteristic Value Field		ParentEntityId
Relationship Description		RelationshipId = 1 to indicate the hierarchy relationship
Notes:		Examples: A Public School Academy District is the parent of its Public School Academy School (child). An LEA District is the parent of its schools.

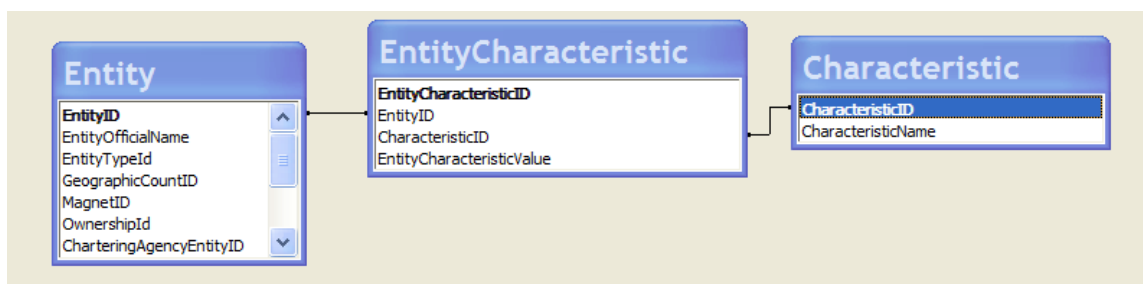
**Relationship Type:** Relationship Type details are stored in this table. "Is Part Of" is not used in the EEM, although it is listed. The vendor did not implement its use.



## 47.Entity Retroactively Closed

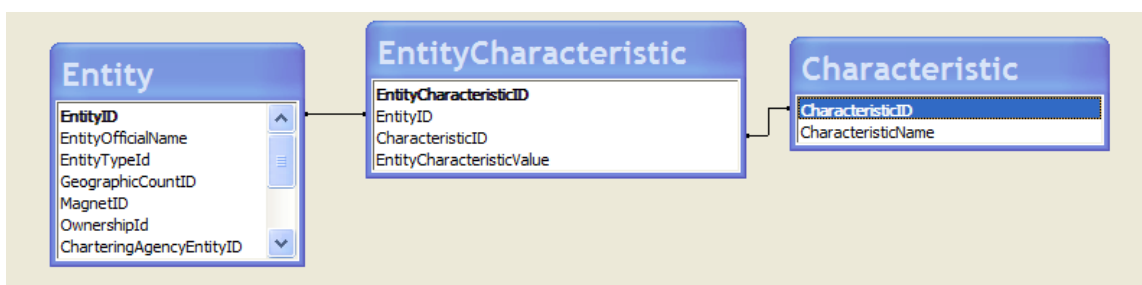
Description:	When CEPI is notified after an entity was closed, this characteristic is checked.
Characteristic ID	319
Data Type:	11: Yes/No (or True/False, or Boolean)
Field Restriction/Rule	
Characteristic Source Table	EntityCharacteristic

Characteristic Value Field	Entity Retroactively Closed
Relationship Description	
Notes:	CEPI is notified after the fact that this entity is closed. It is then closed in the Educational Entity Master retroactively (with a past date). This characteristic is then to be checked on this entity.



#### 48.Entity Retroactively Opened

Description:	When CEPI was notified after an entity was opened, this characteristic is checked.
Characteristic ID	318
Data Type:	11: Yes/No (or True/False, or Boolean)
Field Restriction/Rule	
Characteristic Source Table	EntityCharacteristic
Characteristic Value Field	Entity Retroactively Opened
Relationship Description	
Notes:	CEPI is notified that this entity is open, but CEPI was not notified prior to its opening. It is then opened in the Educational Entity Master retroactively (with a past date). This characteristic is then to be checked on this entity.



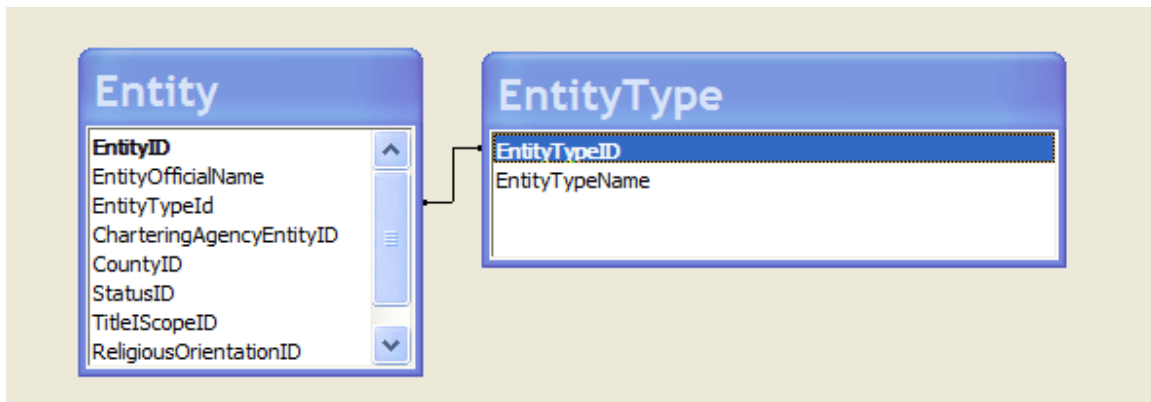
#### 49.Entity Type

Description:	This characteristic labels the entity by type (e.g., ISD school, LEA Unique Education Provider, Nonpublic School, College/University, etc.).
Characteristic ID	154
Data Type:	1: Text (numbers and letters)
Field Restriction/Rule	

Characteristic Source Table	Entity
Characteristic Value Field	Entity Type ID
Relationship Description	EntityTypeID is the primary key in EntityType table.
Notes:	When adding an entity, the entity authorized user will choose the type from his/her permissions list. When viewing the data, this characteristic is provided by the system.

## 50.Fax Extension

Description:	This characteristic denotes the fax extension number where applicable.
Characteristic ID	164
Data Type:	1: Text (numbers and letters)
Field Restriction/Rule	
Characteristic Source Table	Entity
Characteristic Value Field	MainFaxExt
Relationship Description	
Notes:	



## 51.Fax Number

Description:	This characteristic is the fax number of the entity.
Characteristic ID	159
Data Type:	1: Text (numbers and letters)
Field Restriction/Rule	
Characteristic Source Table	Entity
Characteristic Value Field	Main Fax Number
Relationship Description	
Notes:	

## 52.Federal Employer Identification Number (FEIN)

Description:	Federal Tax Identification Number (FEIN)
Characteristic ID	117

Data Type:	3: Numeric Text (can have leading zeros)
Field Restriction/Rule	
Characteristic Source Table	Entity
Characteristic Value Field	FEIN Number
Relationship Description	
Notes:	An Employer Identification Number (EIN) is also known as a Federal Tax Identification Number (FEIN), and is used to identify a business entity. The Internal Revenue Service assigns this nine-digit number. This characteristic is not searchable. Web site: <a href="http://www.irs.gov/businesses/small/article/0,,id=98350,00.html">http://www.irs.gov/businesses/small/article/0,,id=98350,00.html</a>

### 53.FIPS Code

Description:	Federal Information Processing Standards Code (FIPS)
Characteristic ID	115
Data Type:	1: Text (numbers and letters)
Field Restriction/Rule	
Characteristic Source Table	Entity
Characteristic Value Field	FIPSCode
Relationship Description	
Notes:	Example: MI,26,107, Mecosta; First two digits are state (Michigan, 26); next three digits are county FIPS. This characteristic is automatically completed by the system when the county is chosen.

### 54.Functions of Non-Instructional Ancillary Facilities

Description:	The function name that identifies one or more programs/services available at this non instructional ancillary facility.
Characteristic ID	198
Data Type:	
Field Restriction/Rule	
Characteristic Source Table	EntityAncillaryFunction
Characteristic Value Field	AncillaryFunctionId
Relationship Description	
Notes:	All applicable functions should be selected. Administrative Support, Transportation, Plant/Facilities Maintenance, Food Service, Communication/Media, Sports/Recreation, Health Services, Family/Community Center, Professional Training Center, Agriscience/Natural Resources Education Center, Treatment Center, Other

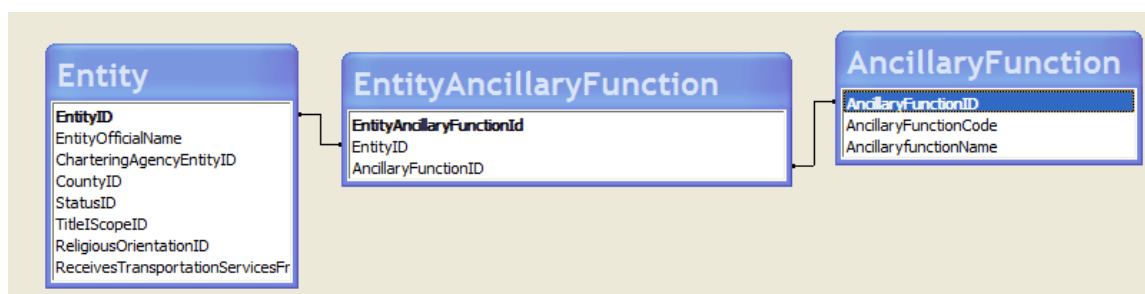
#### Ancillary Function:

This table holds the list of the Ancillary Functions.

Ancillary Function ID	Ancillary Function Code	Ancillary Function Name
1	1	Administrative Support

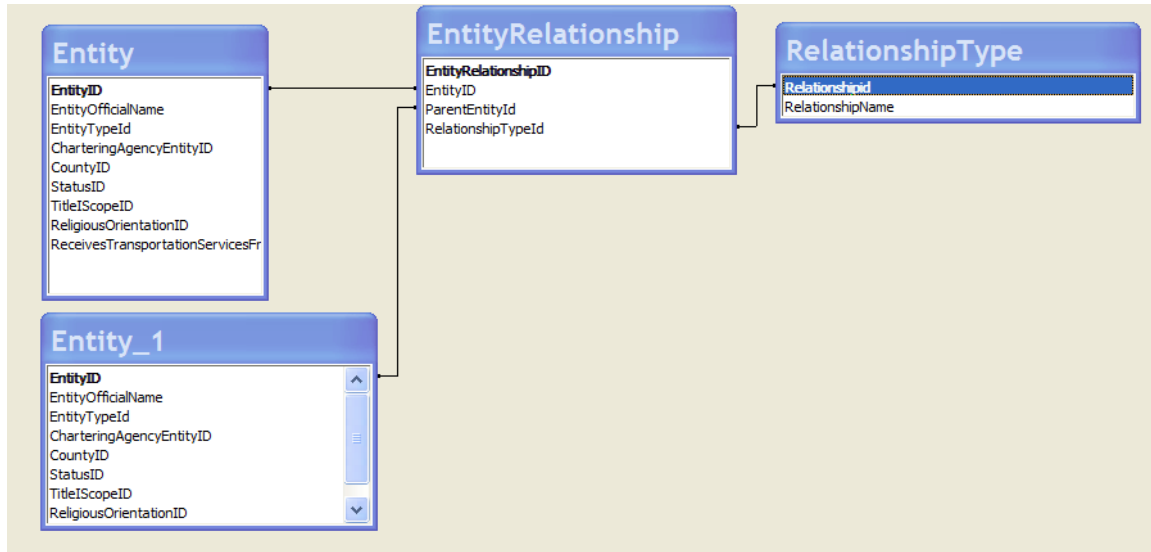


2	2	Transportation
3	3	Plant/Facilities Maintenance
4	4	Food Service
5	5	Communication/Media
6	6	Sports/Recreation
7	7	Health Services
8	8	Family/Community Center
9	9	Professional Training Center
10	10	Pre-School/Day Care Center/Head Start
11	11	Adult Education Center
12	12	Special Education Center
13	13	Alternative Education Center
14	14	Career and Technical Preparation Center
15	15	Juvenile Detention Center/Youth Home
16	16	Migrant Education Center
17	17	Public School Academy Service/Support Center
18	18	Agriscience and Natural Resources Education Center
19	99	Other Facility
20	19	Treatment Center



## 55.Geographical LEA District Name (Code)

Description:	The Local Education Agency (LEA) District in which the entity is located.
Characteristic ID	105
Data Type:	1: Text (numbers and letters)
Field Restriction/Rule	
Characteristic Source Table	EntityRelationship
Characteristic Value Field	ParentEntityID
Relationship Description	RelationshipTypeId = 2 to indicate Geographically Located Within LEA District. Public school academies, nonpublic schools, unique education providers, and non-instructional ancillary facilities are geographically located within a local education agency (LEA) district.
Notes:	



## 56.Grades Actual (Searchable Summary)

Description:	This is a summary of actual grades instructed by an individual entity or a group of entities within a parent entity.
Characteristic ID	333
Data Type:	1: Text (numbers and letters)
Field Restriction/Rule	
Characteristic Source Table	Entity
Characteristic Value Field	ActualGradeListSearchable
Relationship Description	
Notes:	<p>All of the values are stored as comma-separated. Example: KG,1,2,3,4,5,6,7,8,9,10,11,12</p> <p>-----</p> <p>This characteristic is derived by the system from the checked actual grades.</p> <p>Developmental Kindergarten Full Day (DevK): First year of a defined two-year kindergarten program that precedes entry into first grade. Children attend this program at least 1098 hours/school year. Students who attend a standard one-year program, but then are retained in that grade for an additional year, will simply be shown in the same grade for two school years, just as a student who repeats any other grade is shown.</p> <p>--</p> <p>Developmental Kindergarten Part Day (DevK Part): First year of a defined two-year kindergarten program that precedes entry into first grade. Children attend this program at least 549 hours/school year. Students who attend a standard one-year program, but then are retained in that grade for an additional year, will simply be shown in the same grade for two school years, just as a student who repeats any other grade is shown.</p> <p>--</p> <p>Kindergarten Full Day (KG): Children attend this level at least 1098 hours/school year. A group or class that is part of a public</p>

	<p>school program, and is taught during the year preceding first grade.</p> <p>--</p> <p>Kindergarten Part Day (KG Part): Children attend this level at least 549 hours/school year. A group or class that is part of a public school program, and is taught during the year preceding first grade. Commonly referred to as "half-day" kindergarten.</p> <p>--</p> <p>First Grade</p> <p>--</p> <p>Second Grade</p> <p>--</p> <p>Third Grade</p> <p>--</p> <p>Fourth Grade</p> <p>--</p> <p>Fifth Grade</p> <p>--</p> <p>Sixth Grade</p> <p>--</p> <p>Seventh Grade</p> <p>--</p> <p>Eighth Grade</p> <p>--</p> <p>Ninth Grade</p> <p>--</p> <p>Tenth Grade</p> <p>--</p> <p>Eleventh Grade</p> <p>--</p> <p>Twelfth Grade</p>
--	--

### 57.Grades Actual (Summary)

Description:	This is a summary of actual grades instructed by an individual entity or a group of entities within a parent entity.
Characteristic ID	109
Data Type:	1: Text (numbers and letters)
Field Restriction/Rule	
Characteristic Source Table	Entity
Characteristic Value Field	Actual Grade List
Relationship Description	
Notes:	<p>Values are stored as a summary field. Example: KG,1-12 -----</p> <p>This characteristic is derived by the system from the checked actual grades.</p> <p>Developmental Kindergarten Full Day (DevK): First year of a defined two-year kindergarten program that precedes entry into first grade. Children attend this program at least 1098</p>

	<p>hours/school year. Students who attend a standard one-year program, but then are retained in that grade for an additional year, will simply be shown in the same grade for two school years, just as a student who repeats any other grade is shown.</p> <p>--</p> <p>Developmental Kindergarten Part Day (DevK Part): First year of a defined two-year kindergarten program that precedes entry into first grade. Children attend this program at least 549 hours/school year. Students who attend a standard one-year program, but then are retained in that grade for an additional year, will simply be shown in the same grade for two school years, just as a student who repeats any other grade is shown.</p> <p>--</p> <p>Kindergarten Full Day (KG): Children attend this level at least 1098 hours/school year. A group or class that is part of a public school program and is taught during the year preceding first grade.</p> <p>--</p> <p>Kindergarten Part Day (KG Part): Children attend this level at least 549 hours/school year. A group or class that is part of a public school program, and is taught during the year preceding first grade. Commonly referred to as "half-day" kindergarten.</p> <p>--</p> <p>First Grade</p> <p>--</p> <p>Second Grade</p> <p>--</p> <p>Third Grade</p> <p>--</p> <p>Fourth Grade</p> <p>--</p> <p>Fifth Grade</p> <p>--</p> <p>Sixth Grade</p> <p>--</p> <p>Seventh Grade</p> <p>--</p> <p>Eighth Grade</p> <p>--</p> <p>Ninth Grade</p> <p>--</p> <p>Tenth Grade</p> <p>--</p> <p>Eleventh Grade</p> <p>--</p> <p>Twelfth Grade</p>
--	--

**58.Grades Authorized (Searchable Summary)**

Description:	This is a summary of the grades authorized to be instructed by an individual entity or a group of entities within a parent entity.
Characteristic ID	332
Data Type:	1: Text (numbers and letters)
Field Restriction/Rule	
Characteristic Source Table	Entity
Characteristic Value Field	AuthorizedGradeListSearchable
Relationship Description	
Notes:	<p>All the values are stored as comma-separated. Example: DevK,DevK-Part,KG,KG-Part,1,2,3,4,5,6,7,8,9,10,11,12 -----</p> <p>Authorization is given by the administration or chartering agency of the entity. This characteristic is derived by the system from the checked authorized grades.</p> <p>Developmental Kindergarten Full Day (DevK): First year of a defined two-year kindergarten program. Children attend this program at least 1098 hours/school year. Students who attend a standard one-year program, but then are retained in that grade for an additional year, will simply be shown in the same grade for two school years, just as a student who repeats any other grade is shown.</p> <p>--</p> <p>Developmental Kindergarten Part Day (DevK Part): First year of a defined two-year kindergarten program. Children attend this program at least 549 hours/school year. Students who attend a standard one-year program, but then are retained in that grade for an additional year, will simply be shown in the same grade for two school years, just as a student who repeats any other grade is shown.</p> <p>--</p> <p>Kindergarten Full Day (KG): Children attend this level at least 1098 hours/school year. A group or class that is part of a public school program and is taught during the year preceding first grade.</p> <p>--</p> <p>Kindergarten Part Day (KG Part): Children attend this level at least 549 hours/school year. A group or class that is part of a public school program, and is taught during the year preceding first grade. Commonly referred to as "half-day" kindergarten.</p> <p>--</p> <p>First Grade</p> <p>--</p> <p>Second Grade</p> <p>--</p> <p>Third Grade</p> <p>--</p> <p>Fourth Grade</p> <p>--</p>

	Fifth Grade
	--
	Sixth Grade
	--
	Seventh Grade
	--
	Eighth Grade
	--
	Ninth Grade
	--
	Tenth Grade
	--
	Eleventh Grade
	--
	Twelfth Grade

### 59.Grades Authorized (Summary)

Description:	This is a summary of the grades authorized to be instructed by an individual entity or a group of entities within a parent entity.
Characteristic ID	108
Data Type:	1: Text (numbers and letters)
Field Restriction/Rule	
Characteristic Source Table	Entity
Characteristic Value Field	AuthorizedGradeList
Relationship Description	
Notes:	<p>Values are stored as a summary field. Example: DevK,DevK-Part,KG,KG-Part,1-12</p> <p>-----</p> <p>Authorization is given by the administration or chartering agency of the entity. This characteristic is derived by the system from the checked authorized grades.</p> <p>Developmental Kindergarten Full Day (DevK): First year of a defined two-year kindergarten program that precedes entry into first grade. Children attend this program at least 1098 hours/school year. Students who attend a standard one-year program, but then are retained in that grade for an additional year, will simply be shown in the same grade for two school years, just as a student who repeats any other grade is shown.</p> <p>--</p> <p>Developmental Kindergarten Part Day (DevK Part): First year of a defined two-year kindergarten program that precedes entry into first grade. Children attend this program at least 549 hours/school year. Students who attend a standard one-year program, but then are retained in that grade for an additional year, will simply be shown in the same grade for two school years, just as a student who repeats any other grade is shown.</p> <p>--</p>

	<p>Kindergarten Full Day (KG): Children attend this level at least 1098 hours/school year. A group or class that is part of a public school program, and is taught during the year preceding first grade.</p> <p>--</p> <p>Kindergarten Part Day (KG Part): Children attend this level at least 549 hours/school year. A group or class that is part of a public school program, and is taught during the year preceding first grade. Commonly referred to as "half-day" kindergarten.</p> <p>--</p> <p>First Grade</p> <p>--</p> <p>Second Grade</p> <p>--</p> <p>Third Grade</p> <p>--</p> <p>Fourth Grade</p> <p>--</p> <p>Fifth Grade</p> <p>--</p> <p>Sixth Grade</p> <p>--</p> <p>Seventh Grade</p> <p>--</p> <p>Eighth Grade</p> <p>--</p> <p>Ninth Grade</p> <p>--</p> <p>Tenth Grade</p> <p>--</p> <p>Eleventh Grade</p> <p>--</p> <p>Twelfth Grade</p>
--	--

## 60.Grades Button

Description:	This characteristic identifies the grade level(s) for which this entity is authorized to provide instruction and for which it actually provides instruction. The entity authorized user first clicks the grades for which the entity is authorized for instruction and then clicks the grades for which instruction is actually provided.
Characteristic ID	260
Data Type:	
Field Restriction/Rule	
Characteristic Source Table	EntityGrade
Characteristic Value Field	EntityGradeId
Relationship Description	
Notes:	<p>Selectable values:</p> <p>Developmental Kindergarten Full Day (DevK): First year of a defined two-year kindergarten program that precedes entry into</p>

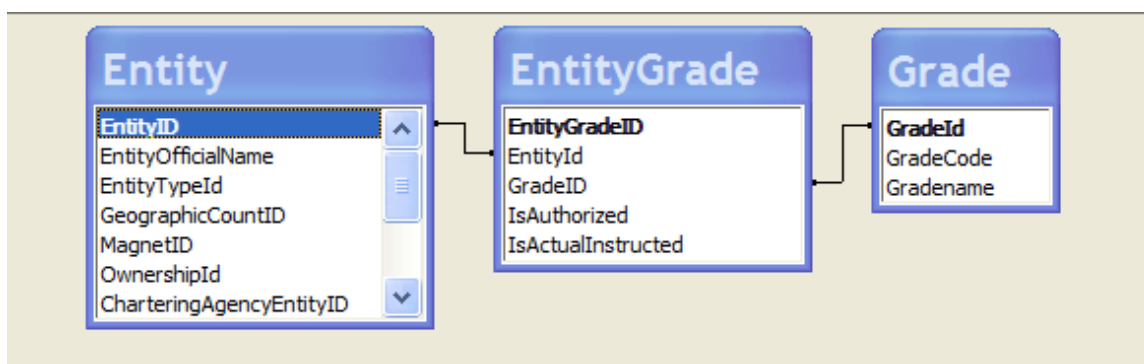
	<p>first grade. Children attend this program at least 1098 hours/school year. Students who attend a standard one-year program, but then are retained in that grade for an additional year, will simply be shown in the same grade for two school years, just as a student who repeats any other grade is shown.</p> <p>--</p> <p>Developmental Kindergarten Part Day (DevK Part): First year of a defined two-year kindergarten program that precedes entry into first grade. Children attend this program at least 549 hours/school year. Students who attend a standard one-year program, but then are retained in that grade for an additional year, will simply be shown in the same grade for two school years, just as a student who repeats any other grade is shown.</p> <p>--</p> <p>Kindergarten Full Day (KG): Children attend this level at least 1098 hours/school year. A group or class that is part of a public school program, and is taught during the year preceding first grade.</p> <p>--</p> <p>Kindergarten Part Day(KG Part): Children attend this level at least 549 hours/school year. A group or class that is part of a public school program, and is taught during the year preceding first grade. Commonly referred to as "half-day" kindergarten.</p> <p>--</p> <p>First Grade</p> <p>--</p> <p>Second Grade</p> <p>--</p> <p>Third Grade</p> <p>--</p> <p>Fourth Grade</p> <p>--</p> <p>Fifth Grade</p> <p>--</p> <p>Sixth Grade</p> <p>--</p> <p>Seventh Grade</p> <p>--</p> <p>Eighth Grade</p> <p>--</p> <p>Ninth Grade</p> <p>--</p> <p>Tenth Grade</p> <p>--</p> <p>Eleventh Grade</p> <p>--</p> <p>Twelfth Grade</p>
--	--

**Grade:**

Grade information is stored in the table.



Grade ID	Grade Sort	Grade Code	Grade Name
1	1	DK	Developmental K Full Day
2	2	DH	Developmental K Part Day
3	3	KG	Kindergarten Full Day
4	4	KH	Kindergarten Part Day
5	5	1	First Grade
6	6	2	Second Grade
7	7	3	Third Grade
8	8	4	Fourth Grade
9	9	5	Fifth Grade
10	10	6	Sixth Grade
11	11	7	Seventh Grade
12	12	8	Eighth Grade
13	13	9	Ninth Grade
14	14	10	Tenth Grade
15	15	11	Eleventh Grade
16	16	12	Twelfth Grade



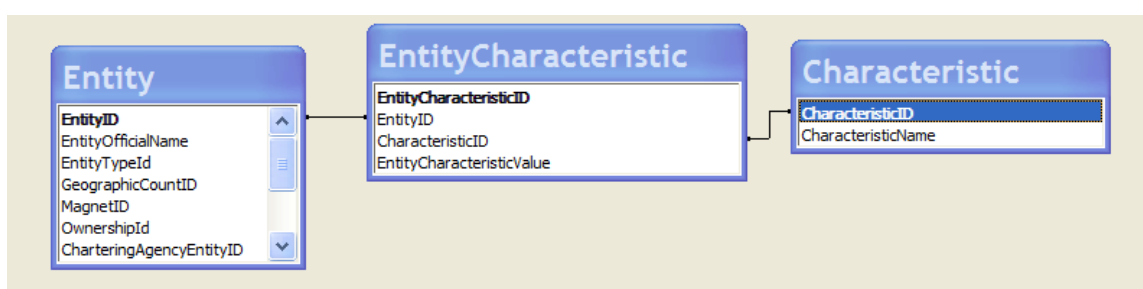
## 61.Headcount Flag

Description:	Legacy Characteristic retained from SCM v3
Characteristic ID	128
Data Type:	11:Yes/No (or True/False, or Boolean)
Field Restriction/Rule	
Characteristic Source Table	
Characteristic Value Field	
Relationship Description	
Notes:	This is not being used in EEM. (Legacy from School Code Master)

## 62.International Baccalaureate Program

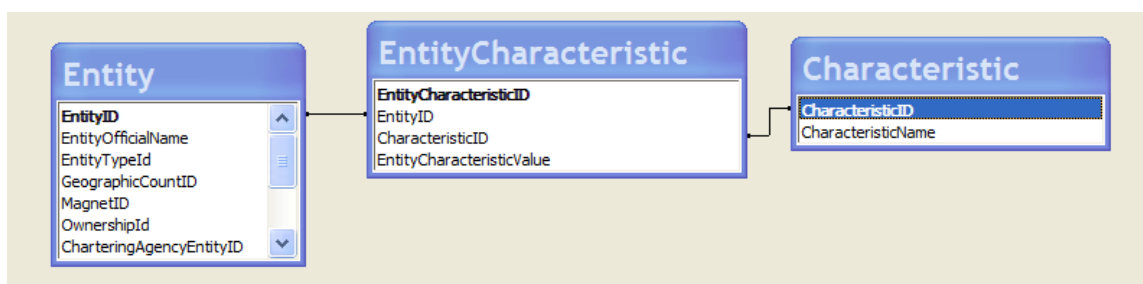
Description:	Indicator of whether this program is offered by an entity.
--------------	--

Characteristic ID	266
Data Type:	11: Yes/No (or True/False, or Boolean)
Field Restriction/Rule	
Characteristic Source Table	EntityCharacteristic
Characteristic Value Field	International Baccalaureate Program
Relationship Description	
Notes:	Box should be checked if program is offered by the entity. An indicator if the entity offers the International Baccalaureate Program. "International Baccalaureate (IB) offers high quality programs of international education to a worldwide community of schools. There are more than 626,000 IB students at 2,336 schools in 128 countries." Web site: <a href="http://www.ibo.org/">http://www.ibo.org/</a>



### 63.Is DPPD (District Provided Professional Development)

Description:	This yes/no field identifies those state-approved nonpublic schools that elect to allow the Office of Professional Preparation Services (OPPS) to track district provided professional development (DPPD).
Characteristic ID	364
Data Type:	11: Yes/No (or True/False, or Boolean)
Field Restriction/Rule	
Characteristic Source Table	Entity Characteristic
Characteristic Value Field	EntityCharacteristicValue
Relationship Description	
Notes:	



**64. Locale Code**

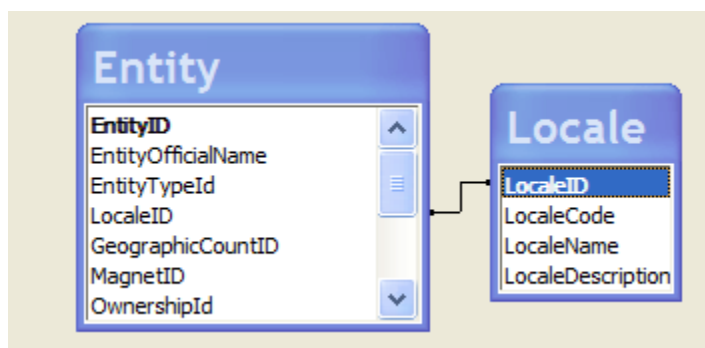
Description:	Locale code is a measure of a school's location relative to populous areas.
Characteristic ID	120
Data Type:	1: Text (numbers and letters)
Field Restriction/Rule	
Characteristic Source Table	Entity
Characteristic Value Field	LocaleID
Relationship Description	Currently Entity table does not store a value for this field.
Notes:	<p>This information is obtained and entered by CEPI from an NCES file. It is not entered by the entity authorized user. These new urban-centric locale categories serve the same purpose as the previous metro-centric categories, but are defined by a combination of their population and their distance from an urban area. There are a total of twelve urban-centric categories, organized in a two level hierarchy; the four categories of the upper level (city, suburban, town, rural) are each divided into three subcategories. (See NCES Locale Codes Appendix A for more information at <a href="http://nces.ed.gov/ccd/pdf/sl051agen.pdf">http://nces.ed.gov/ccd/pdf/sl051agen.pdf</a>.)</p> <p>City: Large: Territory inside an urbanized area and inside a principal city with population of 250,000 or more.  City: Midsize: Territory inside an urbanized area and inside a principal city with population less than 250,000 and greater than or equal to 100,000.  City: Small: Territory inside an urbanized area and inside a principal city with population less than 100,000.  Suburb: Large: Territory outside a principal city and inside an urbanized area with population of 250,000 or more.  Suburb: Midsize: Territory outside a principal city and inside an urbanized area with population less than 250,000 and greater than or equal to 100,000.  Suburb: Small: Territory outside a principal city and inside an urbanized area with population less than 100,000.  Town: Fringe: Territory inside an urban cluster that is less than or equal to 10 miles from an urbanized area.  Town: Distant: Territory inside an urban cluster that is more than 10 miles and less than or equal to 35 miles from an urbanized area.  Town: Remote: Territory inside an urban cluster that is more than 35 miles from an urbanized area.  Rural: Fringe: Census-defined rural territory that is less than or equal to 5 miles from an urbanized area, as well as rural territory that is less than or equal to 2.5 miles from an urban cluster.  Rural: Distant: Census-defined rural territory that is more than 5 miles but less than or equal to 25 miles from an urbanized area, as well as rural territory that is more than 2.5 miles but less than or equal to 10 miles from an urban cluster.</p>

	Rural: Remote: Census-defined rural territory that is more than 25 miles from an urbanized area and is also more than 10 miles from an urban cluster.
--	---

**Locale:**

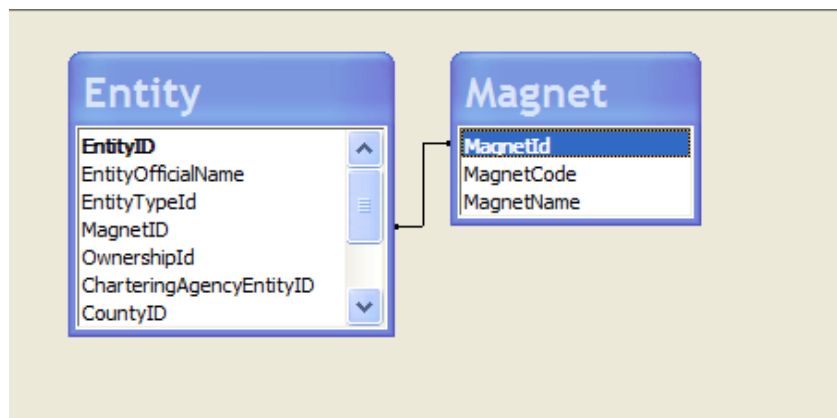
Locale Information is stored in this table.

LocaleID	Locale Code	Locale Name	Locale Description
1	11	City: Large	Territory inside an urbanized area and inside a principal city with population of 250,000 or more.
2	12	City: Midsize	Territory inside an urbanized area and inside a principal city with population less than 250,000 and greater than or equal to 100,000.
3	13	City: Small	Territory inside an urbanized area and inside a principal city with population less than 100,000.
4	21	Suburb: Large	Territory outside a principal city and inside an urbanized area with population of 250,000 or more.
5	22	Suburb: Midsize	Territory outside a principal city and inside an urbanized area with population less than 250,000 and greater than or equal to 100,000.
6	23	Suburb: Small	Territory outside a principal city and inside an urbanized area with population less than 100,000.
7	31	Town: Fringe	Territory inside an urban cluster that is less than or equal to 10 miles from an urbanized area.
8	32	Town: Distant	Territory inside an urban cluster that is more than 10 miles and less than or equal to 35 miles from an urbanized area.
9	33	Town: Remote	Territory inside an urban cluster that is more than 35 miles from an urbanized area.
10	41	Rural: Fringe	Census-defined rural territory that is less than or equal to 5 miles from an urbanized area, as well as rural territory that is less than or equal to 2.5 miles from an urban cluster.
11	42	Rural: Distant	Census-defined rural territory that is more than 5 miles but less than or equal to 25 miles from an urbanized area, as well as rural territory that is more than 2.5 miles but less than or equal to 10 miles from an urban cluster.
12	43	Rural: Remote	Census-defined rural territory that is more than 25 miles from an urbanized area and is also more than 10 miles from an urban cluster.



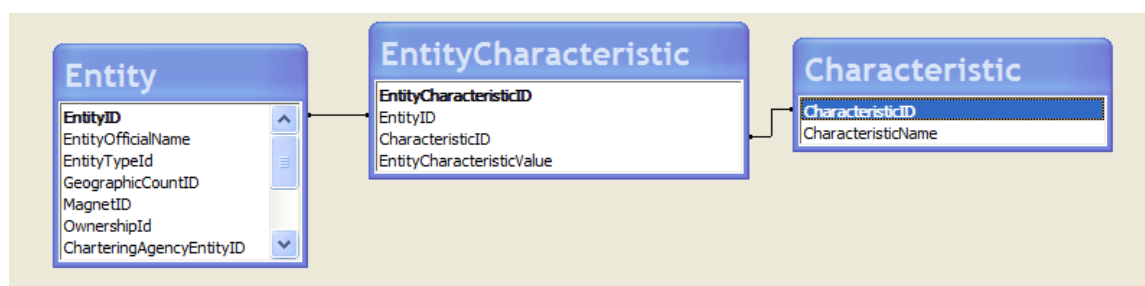
## 65.Magnet School

Description:	This characteristic denotes whether or not a school is a magnet school		
Characteristic ID	112		
Data Type:	6: List of Values (choose from list)		
Field Restriction/Rule			
Characteristic Source Table	Entity		
Characteristic Value Field	Magnet ID		
Look Up Table for List of Values	Magnet		
Relationship Description			
List of Values From Magnet Table	Magnet ID	Magnet Code	Magnet Name
	1	1	General Education
	2	2	Arts
	3	3	Foreign Language
	4	4	Gifted/Talented
	5	5	Language Arts
	6	6	Math
	7	7	Math/Science
	8	8	Media/Technology
	9	9	Music
	10	10	Performing Arts
	11	11	Science
	12	12	Other
13	99	Does not apply	
Notes:	A magnet school is a special school designed to attract students of different backgrounds for the purpose of reducing, preventing, or eliminating isolation, and/or to provide an academic or social focus on a particular theme (e.g., science/math, performing arts, gifted/talented, or foreign language). (Definition from the National Center for Education Statistics)		



## 66. Migrant Education Program

Description:	The entity code of the parent for entities that offer a migrant program.
Characteristic ID	265
Data Type:	1: Text (numbers and letters)
Field Restriction/Rule	
Characteristic Source Table	Entity Characteristic
Characteristic Value Field	Migrant Education Program
Relationship Description	
Notes:	This entity supports high-quality comprehensive educational programs for migratory children to help reduce the educational disruptions and other problems that result from repeated moves. The program provides educational and support services to migrant children and youth through both regular school year and summer programs. These data are provided by the Michigan Department of Education, Office of School Improvement.



## 67. NCES District Code

Description:	This NCES seven-digit district code is assigned by the U.S. Department of Education, National Center for Education Statistics, and used for reporting educational data.
Characteristic ID	118
Data Type:	1: Text (numbers and letters)

Field Restriction/Rule	
Characteristic Source Table	Entity
Characteristic Value Field	NCES Code
Relationship Description	
Notes:	The first two digits of the seven-digit federal school district ID identify the state, and the last five identify the federal district ID. These data are uploaded by the Department of Information Technology.

## 68.NCES School Code

Description:	This NCES 12-digit school code is assigned by the U.S. Department of Education, National Center for Education Statistics, and used for reporting educational data.
Characteristic ID	119
Data Type:	1: Text (numbers and letters)
Field Restriction/Rule	
Characteristic Source Table	Entity
Characteristic Value Field	NCES Code
Relationship Description	
Notes:	The first seven digits of the 12-digit federal school ID are the federal district ID, and the last five are the federal school ID. These data are uploaded by the Department of Information Technology.

## 69.Neglected/Delinquent Facility

Description:	Institution for Neglected Children- a public or private residential facility, other than a foster home, that is operated primarily for the care of children who have been committed to the institution, or voluntarily placed in the institution under applicable State law due to abandonment, neglect, or death of their parents or guardians.	
	Institution for Delinquent Children and Youth- a public or private residential facility that is operated primarily for the care of children who have been adjudicated as delinquent or in need of supervision.	
Characteristic ID	358	
Data Type:	6: List of Values (choose from list)	
Field Restriction/Rule		
Characteristic Source Table	EntityCharacteristic	
Characteristic Value Field	Neglected/Delinquent Facility	
Look-Up Table for List of Values	CharacteristicEnum	
List of Values From CharacteristicEnum Table	Enum Description	
	Neglected Facility	
	Delinquent Facility	

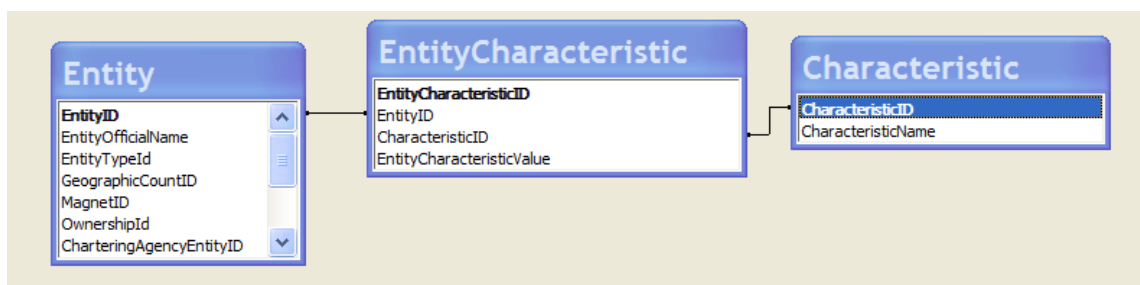
	None
Notes:	

**CharacteristicEnum:**

CharateristicEnumId	CharacteristicID	EnumDescription
306	308	Neglected Facility
307	308	Delinquent Facility
308	308	None

**70.No. of Community Outreach Programs or Events**

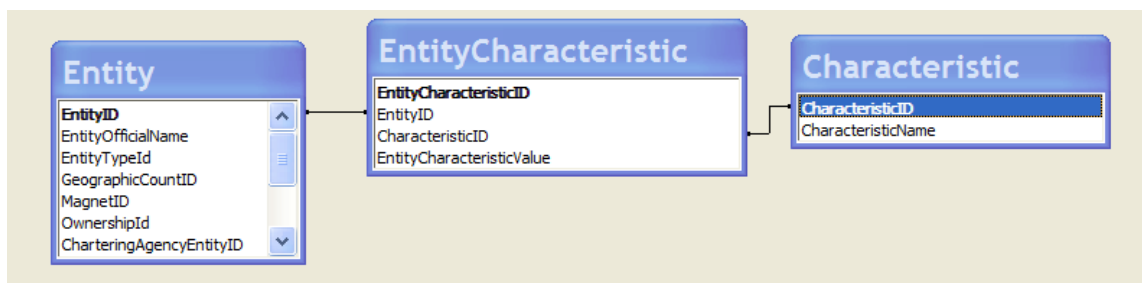
Description:	No. of Community Outreach Programs or Events as part of Points of Pride.
Characteristic ID	344
Data Type:	6: List of Values (choose from list)
Field Restriction/Rule	
Characteristic Source Table	EntityCharacteristic
Characteristic Value Field	EntityCharacteristicValue
Relationship Description	
Notes:	<p>Indicate the number of programs designed to get students involved in the community to better themselves and the community itself.</p> <p><b>List Of Values</b> include</p> <p><b>1-5</b></p> <p><b>6-10</b></p> <p><b>11-15</b></p> <p><b>16 or More</b></p>

**71.No. of NBPTS Certified Teachers**

Description:	No. of NBPTS Certified Teachers as part of Points of Pride.
Characteristic ID	345
Data Type:	6: List of Values (choose from list)
Field Restriction/Rule	
Characteristic Source Table	EntityCharacteristic
Characteristic Value Field	EntityCharacteristicValue
Relationship Description	



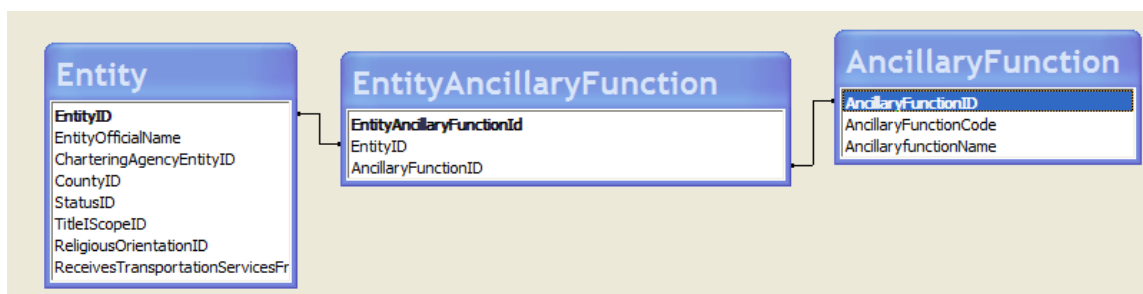
Notes:	<p>Indicate the number of teachers who have National Board for Professional Teaching Standards (NBPTS) certification.</p> <p><b>List Of Values</b> include</p> <p><b>1-5</b></p> <p><b>6-10</b></p> <p><b>11-15</b></p> <p><b>16 or More</b></p>
--------	--



## 72.Non-Instructional Ancillary Functions (Summary)

Description:	This is a summary of the non-instructional functions designated by the EEM authorized user for this entity.			
Characteristic ID	315			
Data Type:	1: Text (numbers and letters)			
Field Restriction/Rule				
Characteristic Source Table	Entity Ancillary Function			
Characteristic Value Field	Ancillary Function ID			
Look Up Table for List of Values	Ancillary Function			
Relationship Description	Each entity may have 0 or more than one ancillary function associated with it.			
Notes:	This characteristic is derived by the system based upon data submitted by the entity authorized user. One or more of the following may be designated			
	<b>Ancillary Function ID</b>	<b>Code</b>	<b>Function Name</b>	<b>Function Description</b>
	1	01	Administrative Support	A facility that exists primarily to support school administration.
	2	02	Transportation	A shelter or business facility where school vehicles (e.g., buses) are stored.

	3	03	Plant/Facilities Maintenance	A facility used primarily for storage or use of school maintenance supplies and/or vehicles.	
	4	04	Food Service	A facility used primarily for serving and/or preparing meals.	
	5	05	Communication/Media	A facility used primarily as a media center or broadcast center.	
	6	06	Sports/Recreation	A facility or space housing activities related to sport or recreational activity (e.g., swimming pool, tennis courts).	
	7	07	Health Services	A facility primarily housing health services (e.g., a clinic).	
	8	08	Family/Community Center	A facility used primarily for family/community support, meetings, activities.	
	9	09	Professional Training Center	A facility/conference center where the primary focus is the enhancement of professional skills for instructional staff.	
	18	18	Agriscience and Natural Resources Education Center	A facility where agriscience and/or natural resources programs are provided, but for the purposes of the Educational Entity Master, the facility is not considered to be a school.	
	19	99	Other Facility	Any facility that is not a school and is not listed in any other function.	
	20	19	Treatment Center	A facility that offers specialized treatment for students of LEAs, ISDs, and PSAs. The facility may be private, nonprofit or private, for-profit, contracting services.	



### 73.Nonpublic ISD

Description:	Entity Name and Code of the the Intermediate School District (ISD) associated with the district that provides transportation services to a nonpublic entity.
Characteristic ID	327
Data Type:	1: Text (numbers and letters)
Field Restriction/Rule	
Characteristic Source Table	No details are available

Characteristic Value Field	
Relationship Description	
Notes:	This will either be the ISD that has a "Receives Transportation From" relationship to the nonpublic entity or the entity returned will be the the parent of the entity that has a "Receives Transportation From" relationship to the nonpublic entity.

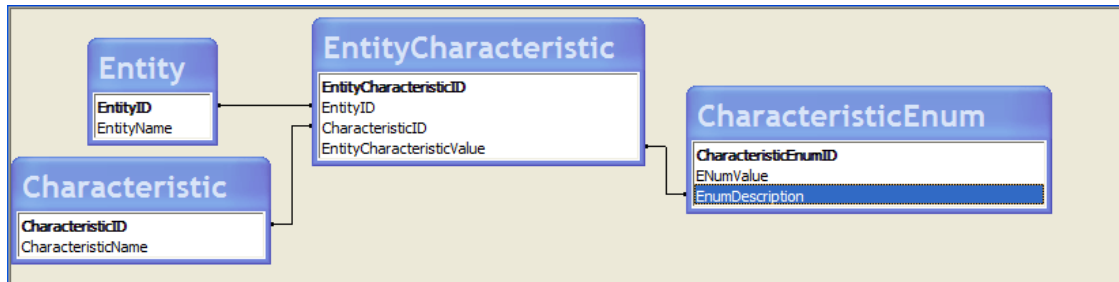
## 74.Official Name of Entity

Description:	This characteristic denotes the official or legal name of the entity. <b>The official name of the entity should be used when referencing an entity, not its Common Name.</b>
Characteristic ID	106
Data Type:	1: Text (numbers and letters)
Field Restriction/Rule	Required field for all entities of all Entity types
Characteristic Source Table	Entity
Characteristic Value Field	Entity Official Name
Relationship Description	
Notes:	In order to change the Official Name of a School District (LEA or PSA), a copy of the local Board of Education Minutes at which the name change was approved must be forwarded to the Educational Entity Master administrator at CEPI. Other name changes may be requested. All must be approved.

## 75.Path of Entry into EAS

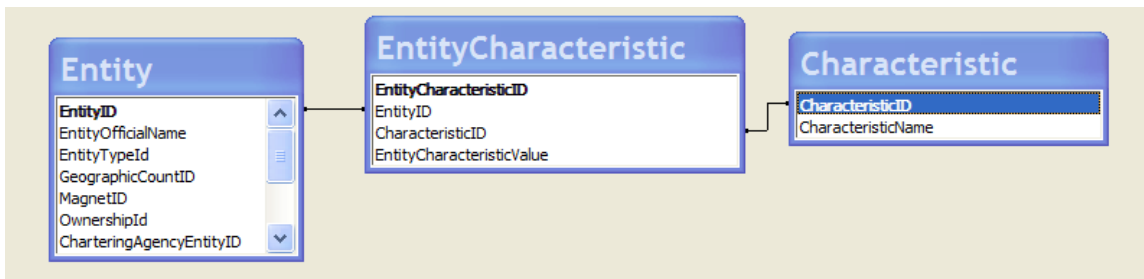
Description:	The reason why an Entity is moved under EAS District.											
Characteristic ID	356											
Data Type:	6: List of Values (choose from list)											
Field Restriction/Rule												
Characteristic Source Table	Entity Characteristic											
Characteristic Value Field	Entity Characteristic Value											
Look Up Table for List of Values	CharacteristicEnum											
List of Values From CharacteristicEnum Table	<table><tr><th>EnumValue</th><th>Enum Description</th></tr><tr><td>Persistently Lowest Achieving (PLA) Schools</td><td>Persistently Lowest Achieving (PLA) Schools</td></tr><tr><td>Emergency Manager Decision</td><td>Emergency Manager Decision</td></tr><tr><td>LEA Assignment to EAS</td><td>LEA Assignment to EAS</td></tr><tr><td>New School</td><td>New School</td></tr></table>		EnumValue	Enum Description	Persistently Lowest Achieving (PLA) Schools	Persistently Lowest Achieving (PLA) Schools	Emergency Manager Decision	Emergency Manager Decision	LEA Assignment to EAS	LEA Assignment to EAS	New School	New School
EnumValue	Enum Description											
Persistently Lowest Achieving (PLA) Schools	Persistently Lowest Achieving (PLA) Schools											
Emergency Manager Decision	Emergency Manager Decision											
LEA Assignment to EAS	LEA Assignment to EAS											
New School	New School											

Relationship Description	
Notes:	This is a list of four paths through which a school may be moved into the Education Achievement System (84060). More than one choice may be made. • Persistently Lowest Achieving (PLA) Schools • Emergency Manager Decision • LEA Assignment to EAS • New School



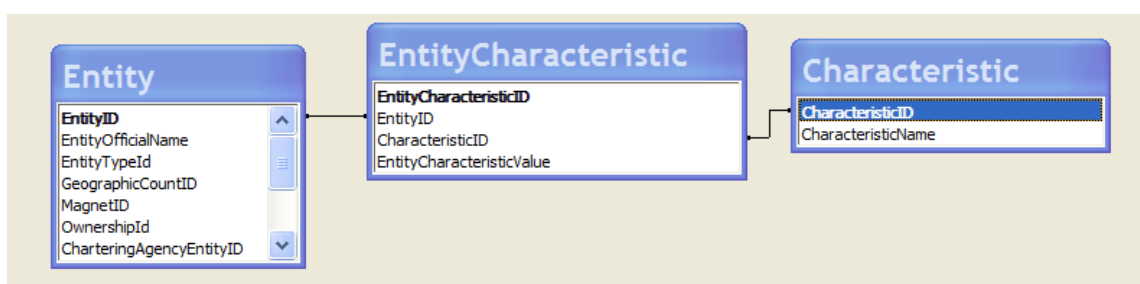
## 76. Percentage of Parent Participation in PTO and /or PT Conferences

Description:	Percentage of Parent Participation in PTO and/or PT Conferences as part of Points of Pride.
Characteristic ID	346
Data Type:	6: List of Values (choose from list)
Field Restriction/Rule	
Characteristic Source Table	EntityCharacteristic
Characteristic Value Field	EntityCharacteristicValue
Relationship Description	
Notes:	Indicate the average percentage of parents who attended parent-teacher conferences and parent teacher organization meetings and/or functions. <b>List Of Values</b> include 1-20% 21-40% 41-60% 61% or greater



## 77. Percentage of Students on Honor Roll

Description:	Percentage of Students on Honor Roll as part of Points of Pride.
Characteristic ID	347
Data Type:	6: List of Values (choose from list)
Field Restriction/Rule	
Characteristic Source Table	EntityCharacteristic
Characteristic Value Field	EntityCharacteristicValue
Relationship Description	
Notes:	<p>Indicate the average percentage of students on the Honor Roll, which is typically considered to be students with a 3.0 average or better on a 4.0 scale.</p> <p><b>List Of Values</b> include</p> <p><b>1-20%</b>  <b>21-40%</b>  <b>41-60%</b>  <b>61% or greater</b></p>



## 78. Phone Number

Description:	This characteristic is the main telephone number of the entity or of one of the contacts.
Characteristic ID	157
Data Type:	1: Text (numbers and letters)
Field Restriction/Rule	
Characteristic Source Table	Entity
Characteristic Value Field	Main Phone Number
Relationship Description	
Notes:	

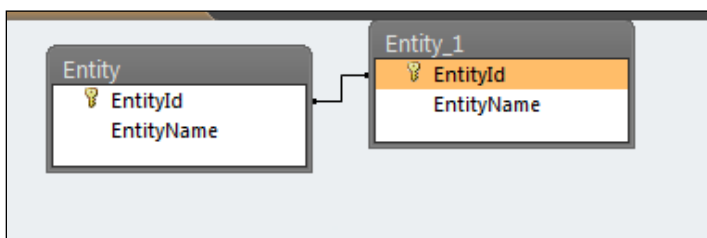
## 79. Phone Extension

Description:	This characteristic is the extension of the main telephone number of the entity or of one of the contacts.
Characteristic ID	158
Data Type:	1: Text (numbers and letters)

Field Restriction/Rule	
Characteristic Source Table	Entity
Characteristic Value Field	Main Phone Ext
Relationship Description	
Notes:	

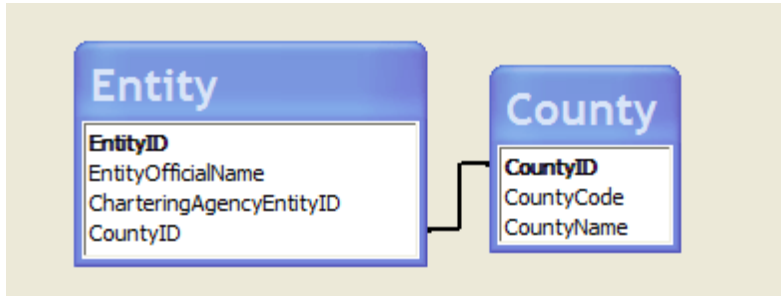
## 80. Previous ISD/LEA/PSA District

Description:	Parent ISD/LEA/PSA District of the Entity before it was moved under EAS District
Characteristic ID	357
Data Type:	6: List of Values (choose from list)
Field Restriction/Rule	Only entities under EAS District can have this value. The ID is the Entity Id of previous LEA / PSA / ISD District.
Characteristic Source Table	Entity
Characteristic Value Field	Entity ID
Look Up Table for List of Values	Entity
Relationship Description	Entity ID of the entity from which the school is moved under EAS District.
Notes:	This is the previous district within which this school belonged.



## 81. Prosperity Region

Description:	A common set of service delivery regions/boundaries for each school district and their constituent buildings within the State of Michigan. There are currently 10 service delivery regions/boundaries.
Characteristic ID	363
Data Type:	4: Whole Number (integer)
Field Restriction/Rule	
Characteristic Source Table	Entity
Characteristic Value Field	ProsperityRegion
Look Up Table for List of Values	County
Relationship Description	
Notes:	

**County:**

The County table holds the data for counties and also the related Prosperity Region between the values of 1 and 10 for each county.

County Code	County Name	Prosperity Region
1	Alcona	3
2	Alger	1
3	Allegan	4
4	Alpena	3
5	Antrim	2
6	Arenac	5
7	Baraga	1
8	Barry	4
9	Bay	5
10	Benzie	2
11	Berrien	8
12	Branch	8
13	Calhoun	8
14	Cass	8
15	Charlevoix	2
16	Cheboygan	3
17	Chippewa	1
18	Clare	5
19	Clinton	7
20	Crawford	3
21	Delta	1
22	Dickinson	1
23	Eaton	7
24	Emmet	2
25	Genesee	6
26	Gladwin	5
27	Gogebic	1
28	Grand Traverse	2

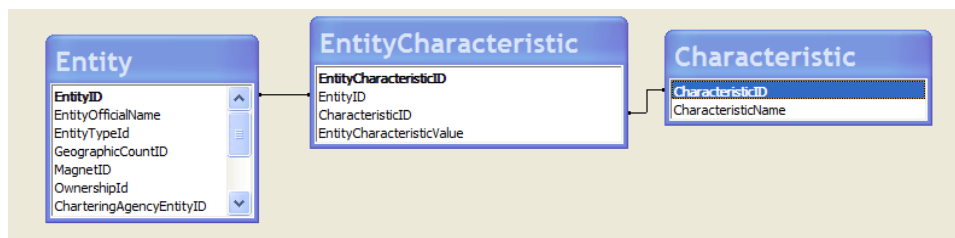
29	Gratiot	5
30	Hillsdale	9
31	Houghton	1
32	Huron	6
33	Ingham	7
34	Ionia	4
35	Iosco	3
36	Iron	1
37	Isabella	5
38	Jackson	9
39	Kalamazoo	8
40	Kalkaska	2
41	Kent	4
42	Keweenaw	1
43	Lake	4
44	Lapeer	6
45	Leelanau	2
46	Lenawee	9
47	Livingston	9
48	Luce	1
49	Mackinac	1
50	Macomb	10
51	Manistee	2
52	Marquette	1
53	Mason	4
54	Mecosta	4
55	Menominee	1
56	Midland	5
57	Missaukee	2
58	Monroe	9
59	Montcalm	4
60	Montmorency	3
61	Muskegon	4
62	Newaygo	4
63	Oakland	10
64	Oceana	4
65	Ogemaw	3
66	Ontonagon	1
67	Osceola	4
68	Oscoda	3
69	Otsego	3



70	Ottawa	4
71	Presque Isle	3
72	Roscommon	3
73	Saginaw	5
74	St. Clair	6
75	St. Joseph	8
76	Sanilac	6
77	Schoolcraft	1
78	Shiawassee	6
79	Tuscola	6
80	Van Buren	8
81	Washtenaw	9
82	Wayne	10
83	Wexford	2
84	State Of Michigan	NULL

## 82.PSA Replacement School

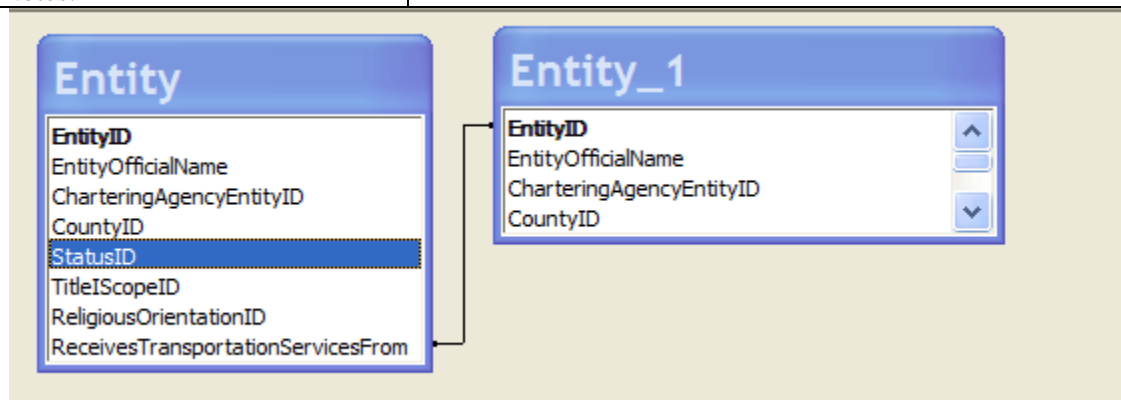
Description:	PSA Replacement School
Characteristic ID	336
Data Type:	11: Yes / No (or True False, or Boolean)
Field Restriction/Rule	
Characteristic Source Table	EntityCharacteristic
Characteristic Value Field	EntityCharacteristicValue
Relationship Description	
Notes:	This is the charter school entity authorized by a state public university as a Public School Academy, under Part 6A of the Revised School Code, which fills a vacancy created by conversion of a Part 6A Public School Academy to a School of Excellence authorized under Part 6E.



## 83.Receives Transportation Services From

Description:	The nonpublic school entity receives transportation services from a Local Education Agency (LEA) district or Intermediate School District (ISD).
Characteristic ID	328

Data Type:	6: List of Values (choose from list)
Field Restriction/Rule	Only entities of Nonpublic School type have this value. The ID is the Entity Id of LEA District or ISD District
Characteristic Source Table	Entity
Characteristic Value Field	Receives Transportation Services From
Look Up Table for List of Values	Entity
Relationship Description	Entity ID of the entity from which nonpublic school receives transportation services is stored.
Notes:	



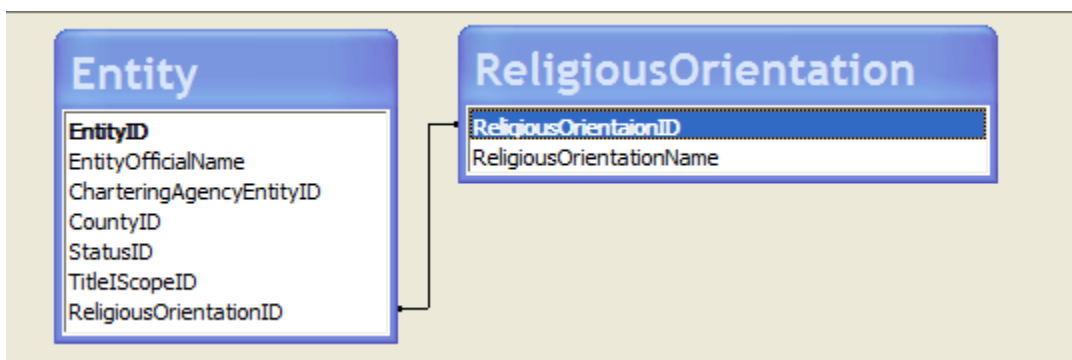
#### 84.Regional Educational Media Centers

Description:	Designates the Regional Code assigned by the REMC Association of Michigan to this entity.
Characteristic ID	116
Data Type:	1: Text (numbers and letters)
Field Restriction/Rule	
Characteristic Source Table	Entity
Characteristic Value Field	RMC ID
Relationship Description	
Notes:	These data are provided by REMC and uploaded by the Department of Information Technology. REMC Web site: <a href="http://www.remc.org/remcs.php">http://www.remc.org/remcs.php</a>

#### 85.Religious Denomination Name (Code)

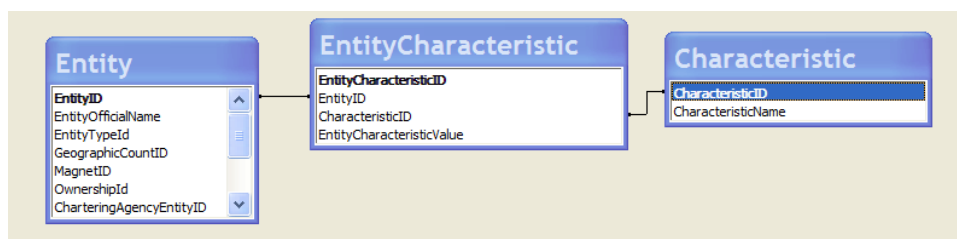
Description:	This characteristic reflects the codes for the list of organized groups of religious congregations
Characteristic ID	121
Data Type:	1: Text (numbers and letters)
Field Restriction/Rule	
Characteristic Source Table	Entity
Characteristic Value Field	Religious Orientation ID
Relationship Description	Religious Orientation ID is null or it has one of the IDs from Religious Orientation table.

Notes:	<p>These data are collected by the Michigan Department of Education, Grants Coordination and School Support, Home School/Nonpublic School Office.</p> <table border="1"> <thead> <tr> <th data-bbox="673 289 846 394"><b>Religious Orientation ID</b></th><th data-bbox="846 289 1325 394"><b>Religious Orientation Name</b></th></tr> </thead> <tbody> <tr><td>1</td><td>African Methodist Episcopal</td></tr> <tr><td>2</td><td>Amish</td></tr> <tr><td>3</td><td>Assembly of God</td></tr> <tr><td>4</td><td>Baptist</td></tr> <tr><td>5</td><td>Brethren</td></tr> <tr><td>6</td><td>Calvinist</td></tr> <tr><td>7</td><td>Christian (no specific denomination)</td></tr> <tr><td>8</td><td>Church of Christ</td></tr> <tr><td>9</td><td>Church of God</td></tr> <tr><td>10</td><td>Church of God in Christ</td></tr> <tr><td>11</td><td>Disciples of Christ</td></tr> <tr><td>12</td><td>Episcopal</td></tr> <tr><td>13</td><td>Evangelical Lutheran Church in America</td></tr> <tr><td>14</td><td>Friends</td></tr> <tr><td>15</td><td>Greek Orthodox</td></tr> <tr><td>16</td><td>Islamic</td></tr> <tr><td>17</td><td>Jewish</td></tr> <tr><td>18</td><td>Latter Day Saints</td></tr> <tr><td>19</td><td>Lutheran Church - Missouri Synod</td></tr> <tr><td>20</td><td>Mennonite</td></tr> <tr><td>21</td><td>Methodist</td></tr> <tr><td>22</td><td>Pentecostal</td></tr> <tr><td>23</td><td>Presbyterian</td></tr> <tr><td>24</td><td>Roman Catholic</td></tr> <tr><td>25</td><td>Seventh-Day Adventist</td></tr> <tr><td>26</td><td>Wisconsin Evangelist Lutheran Synod</td></tr> <tr><td>27</td><td>Other Denomination</td></tr> <tr><td>28</td><td>Unknown</td></tr> <tr><td>29</td><td>Unaffiliated - Private Secular</td></tr> <tr><td>30</td><td>Unaffiliated - Religious</td></tr> <tr><td>31</td><td>Muslim</td></tr> <tr><td>32</td><td>Montessori</td></tr> <tr><td>33</td><td>Lake Region Conference of Seventh-Day Adventist</td></tr> <tr><td>34</td><td>Free Methodist</td></tr> <tr><td>35</td><td>Christian Scientist</td></tr> <tr><td>36</td><td>Christian School International (CSI)</td></tr> </tbody> </table>	<b>Religious Orientation ID</b>	<b>Religious Orientation Name</b>	1	African Methodist Episcopal	2	Amish	3	Assembly of God	4	Baptist	5	Brethren	6	Calvinist	7	Christian (no specific denomination)	8	Church of Christ	9	Church of God	10	Church of God in Christ	11	Disciples of Christ	12	Episcopal	13	Evangelical Lutheran Church in America	14	Friends	15	Greek Orthodox	16	Islamic	17	Jewish	18	Latter Day Saints	19	Lutheran Church - Missouri Synod	20	Mennonite	21	Methodist	22	Pentecostal	23	Presbyterian	24	Roman Catholic	25	Seventh-Day Adventist	26	Wisconsin Evangelist Lutheran Synod	27	Other Denomination	28	Unknown	29	Unaffiliated - Private Secular	30	Unaffiliated - Religious	31	Muslim	32	Montessori	33	Lake Region Conference of Seventh-Day Adventist	34	Free Methodist	35	Christian Scientist	36	Christian School International (CSI)
<b>Religious Orientation ID</b>	<b>Religious Orientation Name</b>																																																																										
1	African Methodist Episcopal																																																																										
2	Amish																																																																										
3	Assembly of God																																																																										
4	Baptist																																																																										
5	Brethren																																																																										
6	Calvinist																																																																										
7	Christian (no specific denomination)																																																																										
8	Church of Christ																																																																										
9	Church of God																																																																										
10	Church of God in Christ																																																																										
11	Disciples of Christ																																																																										
12	Episcopal																																																																										
13	Evangelical Lutheran Church in America																																																																										
14	Friends																																																																										
15	Greek Orthodox																																																																										
16	Islamic																																																																										
17	Jewish																																																																										
18	Latter Day Saints																																																																										
19	Lutheran Church - Missouri Synod																																																																										
20	Mennonite																																																																										
21	Methodist																																																																										
22	Pentecostal																																																																										
23	Presbyterian																																																																										
24	Roman Catholic																																																																										
25	Seventh-Day Adventist																																																																										
26	Wisconsin Evangelist Lutheran Synod																																																																										
27	Other Denomination																																																																										
28	Unknown																																																																										
29	Unaffiliated - Private Secular																																																																										
30	Unaffiliated - Religious																																																																										
31	Muslim																																																																										
32	Montessori																																																																										
33	Lake Region Conference of Seventh-Day Adventist																																																																										
34	Free Methodist																																																																										
35	Christian Scientist																																																																										
36	Christian School International (CSI)																																																																										



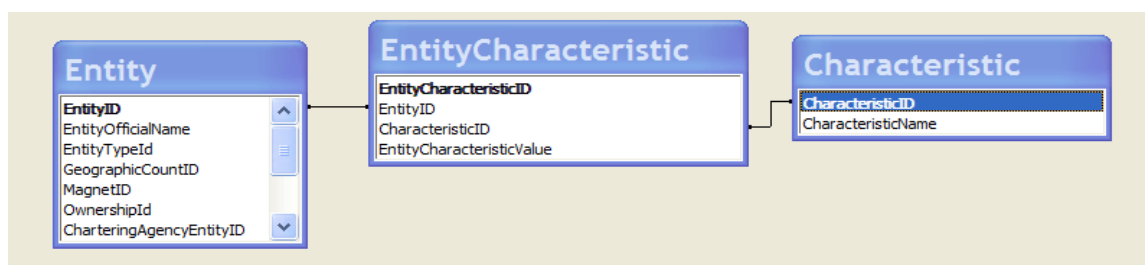
### 86.Reopened as PSA School (from closed LEA school)

Description:	Reopened as PSA school (from closed LEA school)
Characteristic ID	353
Data Type:	11: Yes / No (or True False, or Boolean)
Field Restriction/Rule	
Characteristic Source Table	EntityCharacteristic
Characteristic Value Field	EntityCharacteristicValue
Relationship Description	
Notes:	This entity was a closed LEA school that reopened under another PSA district as a PSA school.



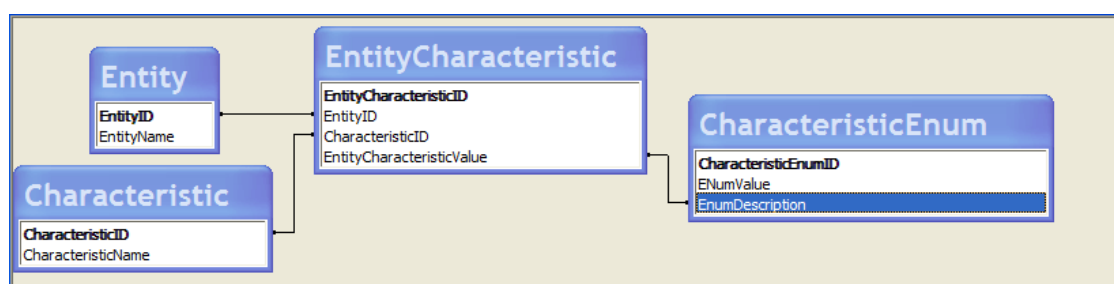
### 87.SAT Test Center Code

Description:	The six-digit test center code assigned by SAT for the Scholastic Aptitude Test test center.
Characteristic ID	367
Data Type:	3: Numeric Text (can have leading zeros)
Field Restriction/Rule	
Characteristic Source Table	EntityCharacteristic
Characteristic Value Field	EntityCharacteristicValue
Relationship Description	
Notes:	These data are entered by MDE.



## 88.SAT Test Center Status

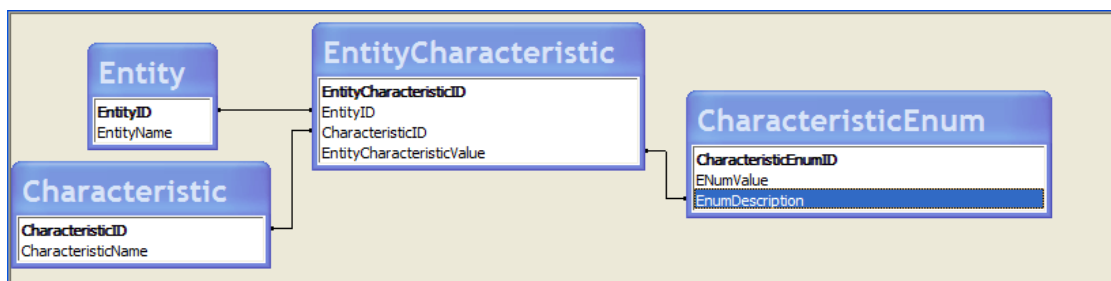
Description:	This field indicates whether or not the school has been approved as a SAT testing center.						
Characteristic ID							
Data Type:	List of Values (choose from list)						
Field Restriction/Rule							
Characteristic Source Table	Entity						
Characteristic Value Field	SATTestCenter						
Look Up Table for List of Values	CharacteristicEnum						
List of Values From CharacteristicEnum Table	<table border="1"> <thead> <tr> <th>EnumValue</th><th>Enum Description</th></tr> </thead> <tbody> <tr> <td>0</td><td>Not SAT Approved Test Center</td></tr> <tr> <td>1</td><td>SAT Approved Test Center</td></tr> </tbody> </table>	EnumValue	Enum Description	0	Not SAT Approved Test Center	1	SAT Approved Test Center
EnumValue	Enum Description						
0	Not SAT Approved Test Center						
1	SAT Approved Test Center						
Relationship Description							
Notes:	These data are entered by MDE.						



## 89.School Emphasis

Description:	This is a required field for public entities. School Emphasis is collected for the Educational Data Exchange Network (EDEN) and Common Core of Data (CCD) for federal reporting. Each school or unique education provider must choose ONE of the types from the list.
Characteristic ID	130

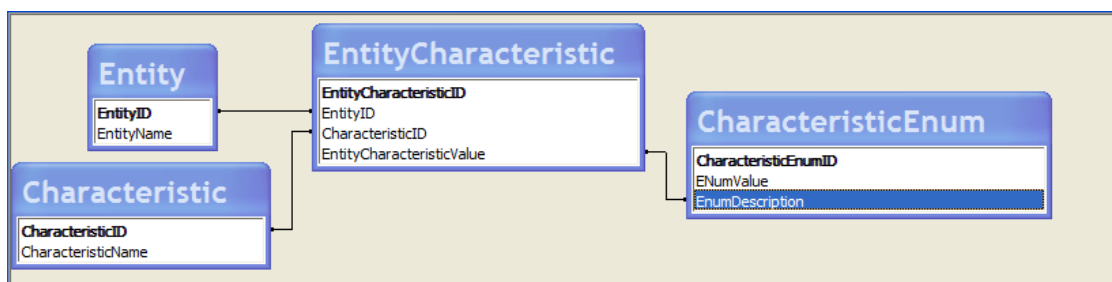
Data Type:	6: List of Values (choose from list)												
Field Restriction/Rule													
Characteristic Source Table	Entity Characteristic												
Characteristic Value Field	School Emphasis												
Look Up Table for List of Values	CharacteristicEnum												
List of Values From CharacteristicEnum Table	<table border="1"> <thead> <tr> <th>EnumValue</th><th>Enum Description</th></tr> </thead> <tbody> <tr> <td>GenEd</td><td>General Education</td></tr> <tr> <td>VocCTE</td><td>Vocational/CTE</td></tr> <tr> <td>SpecEd</td><td>Special Education</td></tr> <tr> <td>AltEd</td><td>Alternative Education</td></tr> <tr> <td>Prog</td><td>Reportable Program</td></tr> </tbody> </table>	EnumValue	Enum Description	GenEd	General Education	VocCTE	Vocational/CTE	SpecEd	Special Education	AltEd	Alternative Education	Prog	Reportable Program
EnumValue	Enum Description												
GenEd	General Education												
VocCTE	Vocational/CTE												
SpecEd	Special Education												
AltEd	Alternative Education												
Prog	Reportable Program												
Relationship Description	Each entity has only one record for this characteristic.												
Notes:	<p>General Education (called regular school in EDEN/CCD): A public elementary/secondary school that does NOT focus primarily on vocational, special or alternative education, although it may provide these programs in addition to a regular curriculum.</p> <p>--</p> <p>Vocational/Career and Technical Education (CTE), called vocational education school in EDEN/CCD: A school that focuses primarily on providing secondary students with an occupationally relevant or career-related curriculum, including formal preparation for vocational, technical or professional occupations.</p> <p>--</p> <p>Special Education - A public elementary/secondary school that focuses primarily on serving the needs of students with disabilities.</p> <p>--</p> <p>Alternative Education - A public elementary/secondary school that addresses the needs of students that typically cannot be met in a regular school program. The school provides nontraditional education; serves as an adjunct to a regular school; and falls outside the categories of regular, special education, or vocational education.</p> <p>--</p> <p>Reportable Program - A program within a school that may be self-contained, but does not have its own principal. For example, the school includes a magnet program that must be reported separately to meet the requirements of the Civil Rights Data Collection.</p>												



## 90. School Of Excellence

Description:	School of Excellence								
Characteristic ID	337								
Data Type:	6: List of Values (choose from list)								
Field Restriction/Rule									
Characteristic Source Table	Entity Characteristic								
Characteristic Value Field	Entity CharacteristicValue								
Look Up Table for List of Values	CharacteristicEnum								
List of Values From CharacteristicEnum Table	<table border="1"> <thead> <tr> <th>EnumValue</th><th>Enum Description</th></tr> </thead> <tbody> <tr> <td>Cyber School</td><td>Cyber School</td></tr> <tr> <td>School of Excellence - New</td><td>School of Excellence - New</td></tr> <tr> <td>School of Excellence - Conversion</td><td>School of Excellence - Conversion</td></tr> </tbody> </table>	EnumValue	Enum Description	Cyber School	Cyber School	School of Excellence - New	School of Excellence - New	School of Excellence - Conversion	School of Excellence - Conversion
EnumValue	Enum Description								
Cyber School	Cyber School								
School of Excellence - New	School of Excellence - New								
School of Excellence - Conversion	School of Excellence - Conversion								
Relationship Description									
Notes:	<p>School of Excellence: This is a charter school entity authorized under Part 6E of the Revised School Code, MCL 380.551-380.561. A School of Excellence may be authorized under Part 6E as a Cyber School, a new school which is not a Cyber School, or through conversion of a school originally authorized under Part 6A and converted to a School of Excellence through authorization under Part 6E.</p> <p>Cyber School: This is a charter school authorized under Part 6E of the Revised School Code, Section 552(2) [MCL 380.552(2)], that must offer grades K-12 and provides full-time instruction to pupils through online learning or otherwise on a computer or other technology, which instruction and learning may be remote from a school facility.</p> <p>School of Excellence-New: This is a charter school entity authorized under Part 6E of the Revised School Code, MCL 380.551-380.561, which is not a Cyber School, and operates at one or more locations identified in the authorizing contract. The</p>								

	<p>new School of Excellence is modeled after a high performing school or program.</p> <p>School of Excellence-Conversion: This is a charter school entity authorized under Part 6E of the Revised School Code, MCL 380.551-380.561, which was converted from a Public School Academy originally authorized under Part 6A of the Revised School Code. In order to convert from a Public School Academy to a School of Excellence, the Public School Academy seeking to convert must meet statutory minimum requirements that demonstrate continuing high academic performance.</p>
--	---



## 91.School of Excellence – Conversion Date

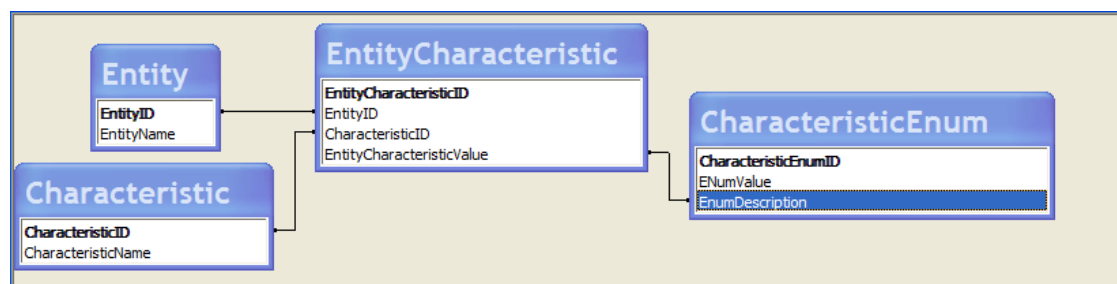
Description:	School of Excellence - Conversion Date
Characteristic ID	338
Data Type:	7: Date (only)
Field Restriction/Rule	
Characteristic Source Table	EntityCharacteristic
Characteristic Value Field	Entity Characteristic Value
Relationship Description	
Notes:	<p>This is the conversion date a charter school entity authorized under Part 6E of the Revised School Code, MCL 380.551-380.561, was converted from a Public School Academy originally authorized under Part 6A of the Revised School Code. In order to convert from a Public School Academy to a School of Excellence, the Public School Academy seeking to convert must meet statutory minimum requirements that demonstrate continuing high academic performance.</p>

## 92.Shared Educational Entity (SEE) Participation

Description:	Shared Educational Entity (SEE) Participation
Characteristic ID	351
Data Type:	6: List of Values (choose from list)
Field Restriction/Rule	
Characteristic Source Table	Entity
Characteristic Value Field	SEETypeId
Relationship Description	

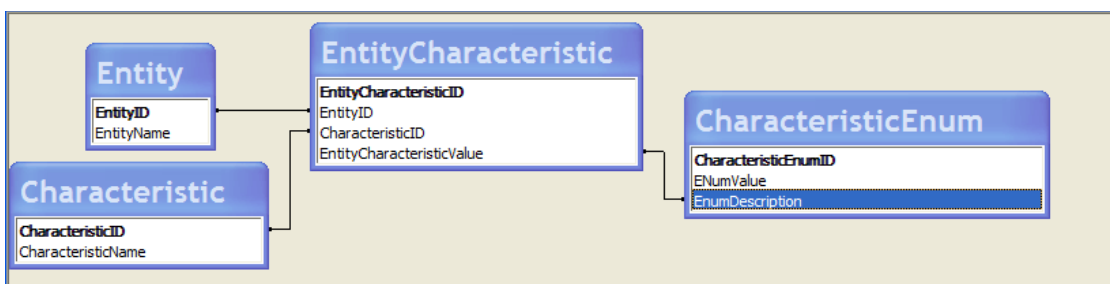


Notes:	Shared Educational Entity (SEE) and Specialized Shared Educational Entity (S2E2): A SEE or an S2E2 is formed when two or more districts cooperate to provide educational services to a group of students, and the member districts agree to participate in the “sending scores back” policy. A SEE provides those educational services in a single location. An S2E2 provides those educational services in multiple classrooms inside of existing schools.
--------	---



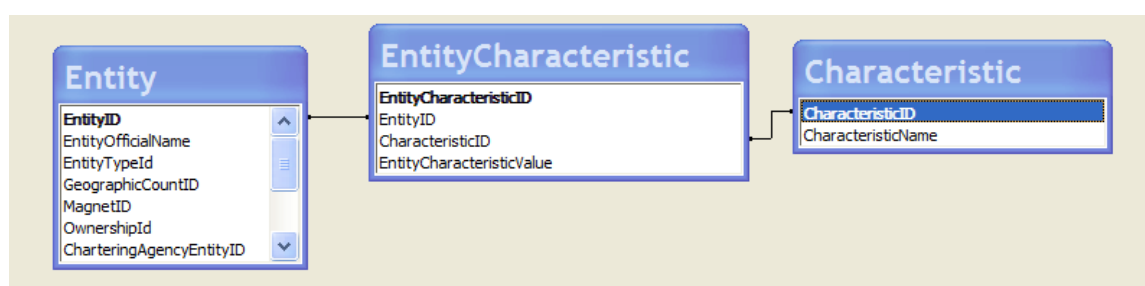
### 93.Shared Education Entity (SEE) Subtype

Description:	Shared Educational Entity (SEE) Subtype
Characteristic ID	352
Data Type:	6: List of Values (choose from list)
Field Restriction/Rule	
Characteristic Source Table	Entity
Characteristic Value Field	SEESubtypeId
Relationship Description	
Notes:	<p>Student Reporting Only Description: The SEE is established for the purpose of reporting students under the State School Aid Act.</p> <p>Student Accountability Only Description: The SEE is established for the purpose of associating student accountability with the student's district of residence.</p> <p>Student Reporting and Accountability The SEE/S2E2 is established for the purpose of associating student accountability with the district of residence. Students may be reported at the SEE/S2E2 by any district that is a member of the SEE/S2E2.</p>



## 94.Shared Time Status

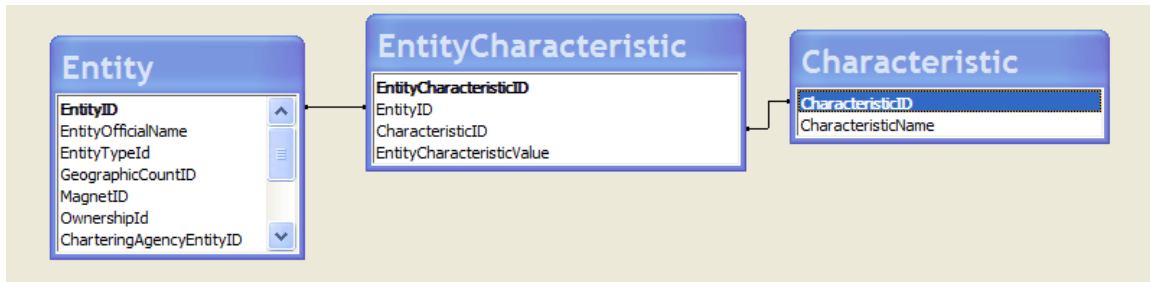
Description:	This is an indication that a school offers vocational/technical education or other educational services in which some or all students are enrolled at a separate school of record and attend the shared time school on a part-time basis.
Characteristic ID	263
Data Type:	11: Yes/No (or True/False, or Boolean)
Field Restriction/Rule	
Characteristic Source Table	Entity Characteristic
Characteristic Value Field	EntityCharacteristicValue
Relationship Description	
Notes:	This characteristic is set by a CEPI School Data Specialist. This characteristic is for federal reporting and is an indication that a school offers vocational/technical education or other educational services in which some or all students are enrolled at a separate school of record and attend the shared time school on a part-time basis. This particular characteristic does NOT refer to the shared-time status between nonpublic and public schools.



## 95.Strict Discipline Academy

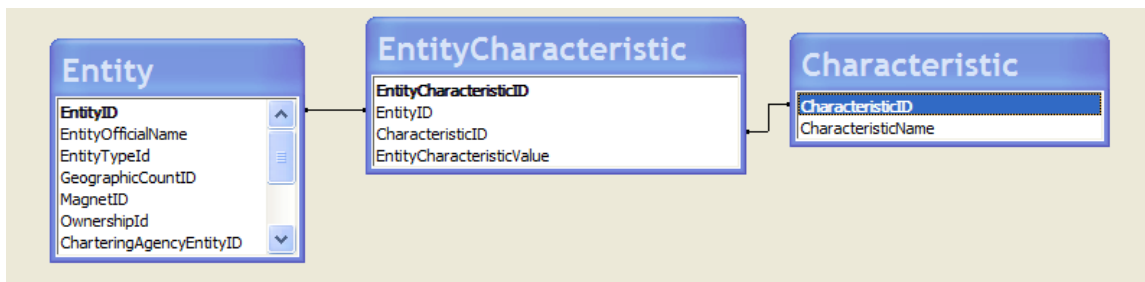
Description:	Strict Discipline Academy
Characteristic ID	152
Data Type:	11: Yes/No (or True/False, or Boolean)
Field Restriction/Rule	Only PSA Districts and PSA Schools have this value
Characteristic Source Table	Entity Characteristic

Characteristic Value Field	EntityCharacteristicValue
Relationship Description	
Notes:	Public School Academy Districts/Schools that are organized under MCLA 380.13111b-1311l.



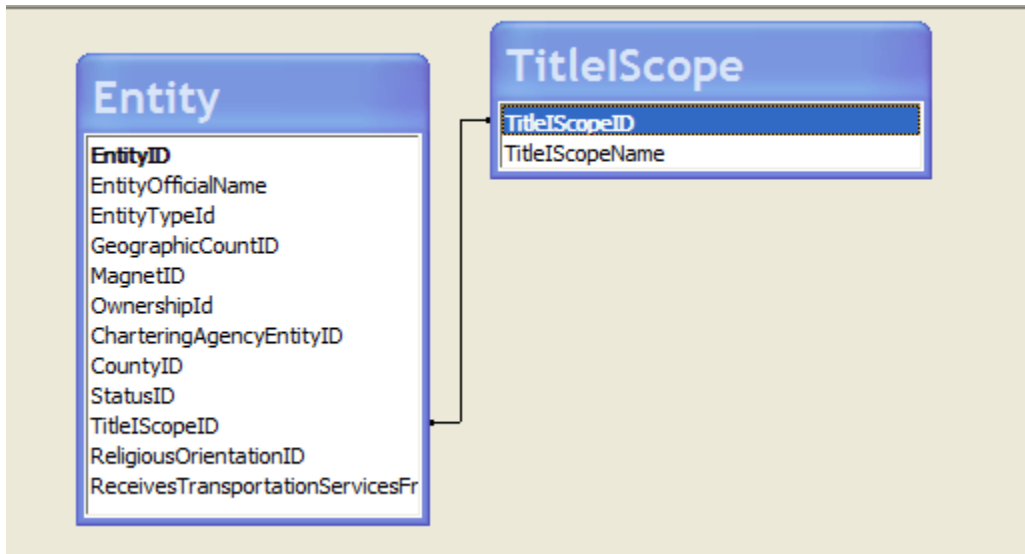
## 96.Student Mentorship Program

Description:	Student Mentorship Program
Characteristic ID	341
Data Type:	11: Yes / No (or True False, or Boolean)
Field Restriction/Rule	
Characteristic Source Table	Entity Characteristic
Characteristic Value Field	EntityCharacteristicValue
Relationship Description	
Notes:	Indicate yes if there is a student mentorship program to assist students; pairs a student with an adult or older or more experienced student for help with personal development, study habits, etc.



**97.Title I Status**

Description:	This characteristic is completed with either School wide or Targeted Assistance if the entity has "Y" for Title I Fund Recipient.
Characteristic ID	136
Data Type:	1: Text (numbers and letters)
Field Restriction/Rule	If Title I Scope is Schoolwide, the value is 1. If the Title I Scope is Targeted, the value is 2.
Characteristic Source Table	Entity
Characteristic Value Field	Title I Scope ID
Relationship Description	One-to-one relationship between Entity and TitleIScope
Notes:	The data are provided by the state of Michigan.

**98.Title I Fund Recipient**

Description:	This characteristic denotes whether or not the entity is receiving Title I funds.
Characteristic ID	135
Data Type:	11: Yes/No (or True/False, or Boolean)
Field Restriction/Rule	None
Characteristic Source Table	Entity
Characteristic Value Field	Title I
Relationship Description	
Notes:	The data are provided by the state of Michigan.

**99.Title I Status Date**

Description:	This characteristic denotes the effective date of the Title I status.
Characteristic ID	137
Data Type:	9: Date and Time

Field Restriction/Rule	None
Characteristic Source Table	Entity
Characteristic Value Field	Title I Date
Relationship Description	
Notes:	The data are provided by the state of Michigan.

### 100.Top to Bottom Cohort

Description:	This characteristic denotes the 4-digit year in which the Reward, Focus, Focus-Successor, Priority and Priority-Successor status was assigned to the building.
Characteristic ID	360
Data Type:	4: Whole Number (integer)
Field Restriction/Rule	
Characteristic Source Table	EntityCharacteristic
Characteristic Value Field	Top to Bottom Cohort
Relationship Description	
Notes:	The data are provided by MDE/OESRA.

### 101.Top to Bottom Status

Description:	This characteristic denotes the Top to Bottom status assigned to a school.	
Characteristic ID	361	
Data Type:	6: List of Values (choose from list)	
Field Restriction/Rule		
Characteristic Source Table	EntityCharacteristic	
Characteristic Value Field	Top to Bottom Status	
Look-Up Table for List of Values	CharacteristicEnum	
List of Values From CharacteristicEnum Table	Enum Description	
	Reward	
	Focus	
	Focus-Successor	
	Priority	
	Priority-Successor	
	Not Available	
Relationship Description		
Notes:	<p>The data are provided by MDE/OESRA. Top to Bottom statuses include the following designations:</p> <p>Reward – Reward schools consists of schools that are achieving one or more of the following distinctions: 1) Top 5% of schools on the Top-to-Bottom list; 2) Top 5% of schools making the greatest gains in achievement (improvement metric); or 3) A school identified as “Beating the Odds”. For more information: <a href="http://www.michigan.gov/ttb">www.michigan.gov/ttb</a>.</p>	

	<p>Focus – Focus schools consist of the 10% of schools on the Top-to-Bottom list with the largest achievement gaps between its top 30% and bottom 30% of students.</p> <p>Focus-Successor – Designates that the focus status from the sending school has been assigned to the receiving school. All accountability designations assigned to the sending school will be attributed to the receiving school.</p> <p>Priority – Priority schools are Michigan public schools identified in the bottom 5% of the statewide Top-to-Bottom ranking. For more information: <a href="http://www.michigan.gov/ttb">www.michigan.gov/ttb</a>.</p> <p>Priority-Successor – Designates that the priority status of the sending school has been assigned to the receiving school. All accountability designations assigned to the sending school will be attributed to the receiving school.</p> <p>Not Available – No designation assigned or not ranked as a result of insufficient data to determine a Top-to-Bottom ranking for the current accountability cycle. For more information: <a href="http://www.michigan.gov/ttb">www.michigan.gov/ttb</a>.</p>
--	--

**CharacteristicEnum:**

CharateristicEnumId	CharacteristicID	EnumDescription
327	361	Reward
328	361	Focus
329	361	Focus-Successor
330	361	Priority
331	361	Priority-Successor
332	361	Not Available

**102.Urban High School Academy**

Description:	
Characteristic ID	153
Data Type:	11: Yes/No (or True/False, or Boolean)
Field Restriction/Rule	Only PSA Districts and PSA Schools have this value
Characteristic Source Table	Entity Characteristic
Characteristic Value Field	EntityCharacteristicValue
Relationship Description	
Notes:	Public School Academy Districts/Schools that are organized under MCLA 380.521-529.

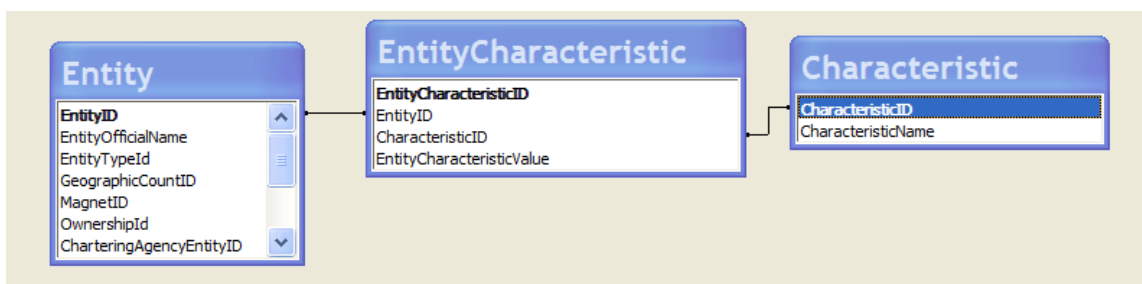


### 103.View State Assessments

Description:	External Link to Assessment Reports
Characteristic ID	308
Data Type:	None
Field Restriction/Rule	None
Characteristic Source Table	Hard-coded in the EEM application
Characteristic Value Field	Web Page: MaintainEntityDataGeneral.aspx.vb
Relationship Description	
Notes:	This is a link to external state student assessment reports. <a href="https://oeaa.state.mi.us/oeaa/directory/index.asp?DCode={0}&amp;BCode={1}">https://oeaa.state.mi.us/oeaa/directory/index.asp?DCode={0}&amp;BCode={1}</a>

### 104.Web Site Address of Entity

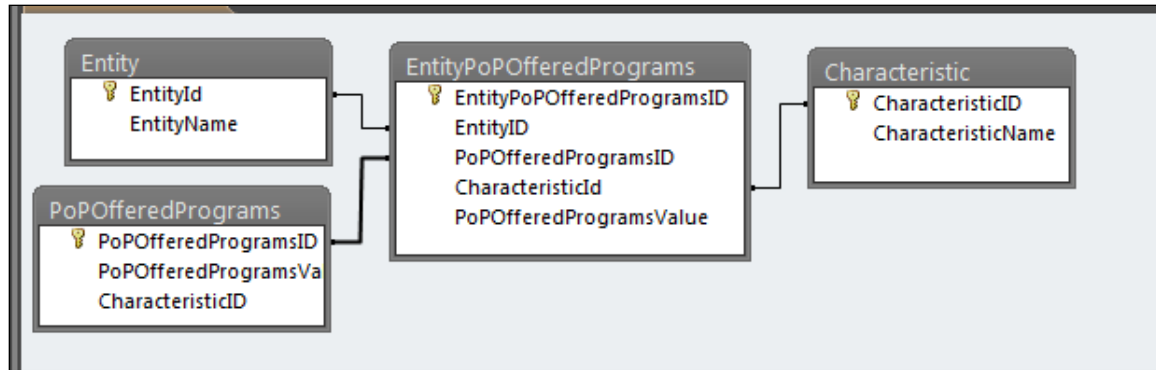
Description:	This characteristic denotes the Web site for this entity.
Characteristic ID	123
Data Type:	1: Text (numbers and letters)
Field Restriction/Rule	
Characteristic Source Table	Entity Characteristic
Characteristic Value Field	Web Site Address of Entity
Relationship Description	Each entity may have zero or more than one Web Site Address.
Notes:	There may be more than one listed.



## 105. World Languages Offered

Description:	World Languages Offered as part of Points of Pride.		
Characteristic ID	348		
Data Type:	11: Yes / No (or True False, or Boolean)		
Field Restriction/Rule			
Characteristic Source Table	Entity Characteristic		
Characteristic Value Field	EntityCharacteristicValue		
Relationship Description			
Notes:	Indicate the world languages offered as courses of study and/or before- or after-school programs.		
List of Values Offered Under Common Assessments	<b>PoP Offered Programs ID</b>	<b>PoP Offered Programs Value</b>	
	10	Spanish	
	11	Chinese	
	12	Arabic	
	13	Latin	
	14	Italian	
	15	French	
	16	Hebrew	
	17	Japanese	
	18	German	
	19	Ancient Greek	
	20	American Sign Language	
	21	Other	





# Additional Characteristics for an Entity

Additional characteristics for an entity are defined in the Entity table and a few more tables other than the characteristics defined in the Characteristics table.

## Entity:

Entity table holds a few characteristics associated with an entity.

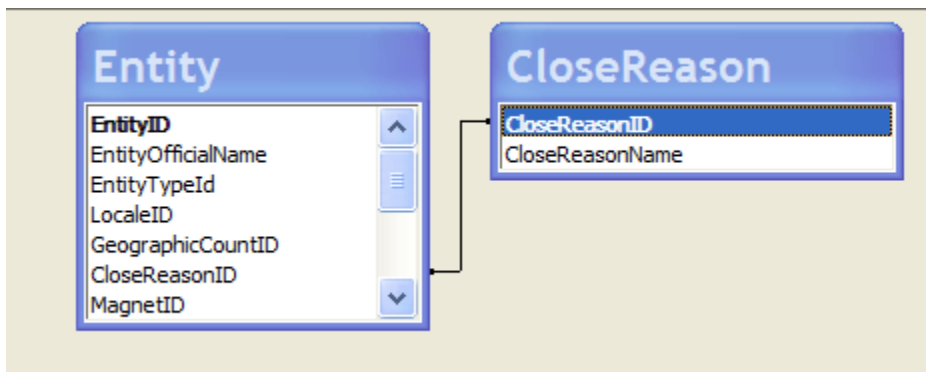
AYP Date  
IsSchoolOfChoiceOffered  
CloseReasonID

### 1. AYPDate:

Description:	The school year for which the entity's AYP status is recorded. The data are provided by the state of Michigan.
Data Type:	9: Date and Time

### 2. CloseReasonID

Description:	The reason why an entity is closed. Refers to the CloseReason table. These are no longer choices for the EEM (used in the past).		
Data Type:	Whole Number (integer)		
CloseReason:	CloseReasonID	CloseReasonName	
	1	Demolished	
	2	Rented	
	3	Condemned	
	4	Sold	



**EntityAddress:**

The multiple addresses associated for an entity type with an entity are included. Each entity will have mailing, physical and any other address type associated with its Entity Type. The physical and mailing addresses are mandatory for each entity.

Each Physical Address row in the EntityAddress table stores the data related to its geographical location. This is called CGI or Center for Geographical Information data. (Note: CGI is now part of the Department of Information Technology, Center for Shared Solutions [CSS].) The CGI data include CGI Status ID, CGI Status Date, X Location, Y Location, Latitude, Longitude, CGI Data, US Congressional District, MI Senate District, and MI House District.

There are multiple address types defined that an entity can have. The address types are defined in the AddressType table, and CGI-related data are stored in the EntityAddress table for physical address type. The CGI Statuses are defined in the CGIStatus table.

**AddressType:**

AddressTypeID	AddressTypeCode	AddressTypeName
1	Mailing	Mailing
2	Physical	Physical
3	Shipping	Shipping
4	MI-Access	MI-Access Shipping Address
5	ELPA	ELPA Shipping Address
6	MEAP	MEAP Shipping Address
8	MME	MME Shipping Address
10	MEAP-Access	MEAP-Access Shipping Address

**Address Types Associated with Different Entity Types:**

Entity Type Name	Address Type Name
Higher Education College/University	Mailing
	Physical
ISD District	Mailing
	MEAP Shipping Address
	MI-Access Shipping Address
	Physical

ISD Non-Instructional Ancillary Facility	Mailing
	Physical
ISD School	Mailing
	MEAP Shipping Address
	Physical
ISD Unique Education Provider	Mailing
	MEAP Shipping Address
	Physical
LEA District	ELPA Shipping Address
	Mailing
	MEAP Shipping Address
	MI-Access Shipping Address
	Physical
	Shipping
LEA Non-Instructional Ancillary Facility	Mailing
	Physical
LEA School	ELPA Shipping Address
	Mailing
	MEAP Shipping Address
	MI-Access Shipping Address
	MME Shipping Address
	Physical
	Shipping
LEA Unique Education Provider	Mailing
	MEAP Shipping Address
	Physical
	Shipping
Nonpublic School	Mailing
	MEAP Shipping Address
	Physical
Nonpublic Unique Education Provider	Physical
Other Non-School Recipient	Mailing
	Physical
PSA District	Mailing
	MEAP Shipping Address
	MI-Access Shipping Address

	Physical
PSA School	Mailing
	MEAP Shipping Address
	MI-Access Shipping Address
	MME Shipping Address
	Physical
PSA Unique Education Provider	Mailing
	Physical
State District	Mailing
	MEAP Shipping Address
	MI-Access Shipping Address
	Physical
State School	Mailing
	MEAP Shipping Address
	Physical
State Unique Education Provider	Mailing
	Physical

**CGI Data:**

Note: CGI is now part of the Department of Information Technology, Center for Shared Solutions [CSS].

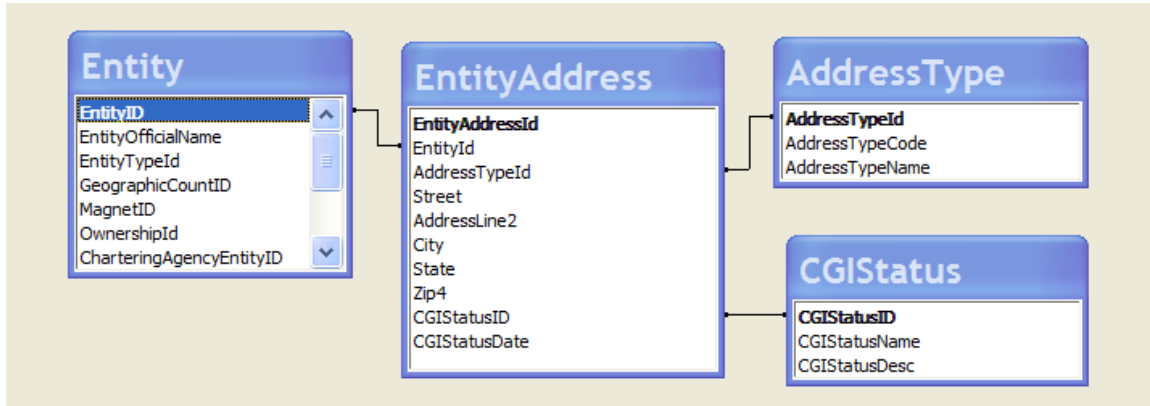
CGI stands for the Center for Geographic Information. The details of the physical address (e.g., street, city, state, and zip code) are sent through a Web service and the details of the CGI data are returned from the Center once the address is searched and matched with CGI data. The details that the EEM receives from CGI are CGI Status Date, X Location, Y Location, Latitude, Longitude, CGI Data, US Congressional District, MI Senate District, and MI House District. The following are the possible statuses based on the result set: a valid match is found, no match is found, or multiple matches are found. The user may select one out of them. CGI statuses are stored in the CGI table.

A valid match gets the Status ID of 2. If a valid match is not found and the user ascertains that the entered address is valid despite the fact that CGI brings multiple or no matches, the Status ID is set to 3.

**CGIStatus:**

CGI Status ID	CGI Status Name	
1	Not Called	Not used
2	Valid	
3	Different - User	
4	Different - CGI	Not used
5	No Matches	Not Used

**Entity Address Relationship:**



### Entity Contact:

The EntityContact table stores the data of the contacts associated with an entity. There is a LeadAdministrator flag in the table to indicate if one among the contacts is the lead administrator of the entity. The details for each record are contact type, contact's title, contact's name, address, e-mail address, effective date and expiration date. The different contact types are defined in the ContactType table, and the different title types are defined in the Title table.

### ContactType:

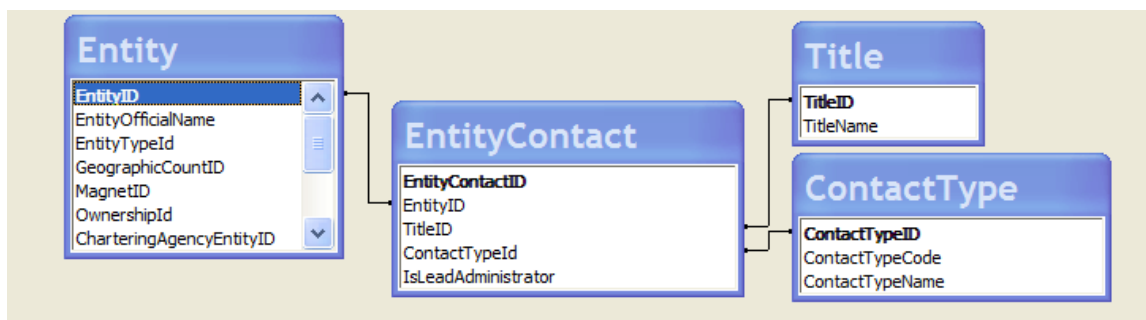
Contact Type Id	Contact Type Code	Contact Type Name
1	1	Superintendent
2	2	Assistant Superintendent
3	3	Administrator
4	4	Principal
5	5	Assistant Principal
6	6	Director
7	7	Assistant Director
8	8	Supervisor
9	9	Coordinator
10	10	Consultant
11	11	Interim Superintendent
12	12	Co-principal
13	13	School Leader
14	14	Interim Administrator
15	15	President
16	16	Interim President
17	17	Vice-President
18	18	Group Vice-President

19	19	Dean
20	20	Assistant Dean
21	21	Associate Dean
22	22	Chancellor
23	23	Executive Director
24	24	Chief Executive Officer
25	25	Chief Operating Officer
26	26	Headmaster
27	27	Contact
28	28	M-Step Coordinator
29	29	MI-Access Coordinator
30	30	English Learner Assessment Coordinator
31	31	WorkKeys Test Coordinator
34	34	School Report Card Contact
35	35	Technology Director
37	37	Career/Technical Education Coordinator
38	38	Migrant Education Summer Program Contact
39	39	Education Service Provider (ESP) Contact
41	99	Other
42	41	Special Education Contact
43	42	Business Manager
44	43	Food Service Director
46	45	Vice Chancellor
47	46	e-Transcript Contact
49	47	Guidance Counselor
50	48	Board President
51	49	Homeless Education Liaison
52	50	Chartering Agency - Assessment
53	51	Title III Administrator
54	52	District Assessment Coordinator
55	53	OK-2-SAY Contact
56	54	Kindergarten Entry Assessment Coordinator
57	55	Interim Assessment Coordinator
58	56	Owner
59	57	Transportation Director
60	58	SAT Test Coordinator
61	59	SAT Backup Test Coordinator
62	60	SAT Services for Students with Disabilities Coordinator
63	61	PSAT 10 Test Coordinator
64	62	PSAT 8/9 Test Coordinator
65	63	PSAT Backup Coordinator

66	64	Foster Care Liaison
----	----	---------------------

**Title:**

Title ID	Title Name
1	Dr.
2	Sr.
3	Rev.
4	Col.
5	Lt Col.
6	Mrs.
7	Ms.
8	Mr.
9	Miss
10	Fr.
11	Br.
12	Pastor
13	Rabbi
14	Friar

**Entity Contact Relationship:****EntityTitleIStatus:**

This table holds the data for an entity's TitleIStatus. It holds the data of Lowincomepercent imported from MEGS with reference to TitleI Status and the School Year.

**TitleIStatus:**

TitleI Status ID	TitleIStatus	TitleIDefinition
1	SWELIGSWPROG	Title I Schoolwide School
2	TGELGBNOPROG	Title I Targeted Assistance Eligible School No Program
3	SWELIGNOPROG	Title I Schoolwide Eligible School No Program

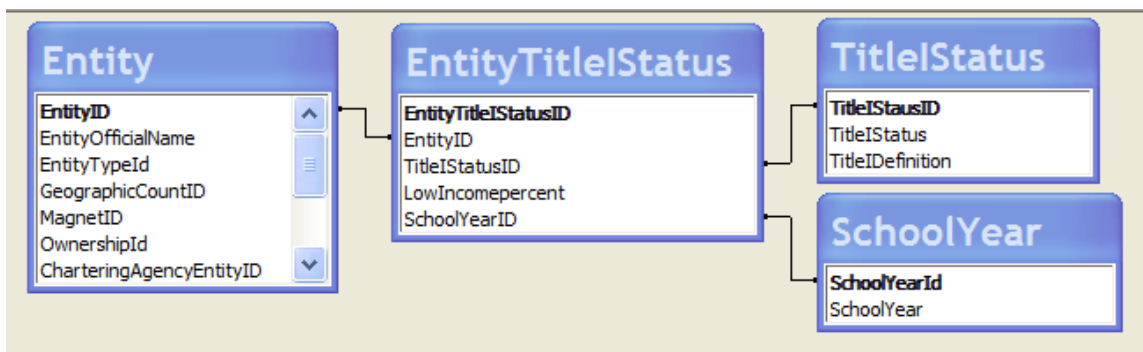


4	SWELIGTGPROG	Title I Schoolwide Eligible Title I Targeted Assistance Program
5	NOTTITLE1ELIG	Not a Title I School
6	TGELGBTGPROG	Title I Targeted Assistance School

**School Year:**

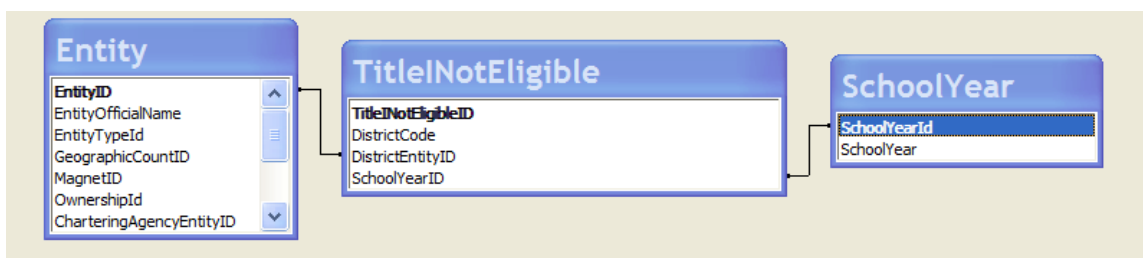
School Year Id	School Year	School Year Open Date	School Year End Date	School Year PoP Open Date	School Year PoP Close Date	Current School Year
1	2007-2008					0
2	2008-2009					0
3	2009-2010					0
4	2010-2011	7/1/2010	6/30/2011	5/2/2011	5/31/2011	0
5	2011-2012	7/1/2011	6/30/2012	5/1/2012	5/31/2012	0
6	2012-2013	7/1/2012	6/30/2013	5/1/2013	5/31/2013	0
7	2013-2014	7/1/2013	6/30/2014	4/28/2014	5/31/2014	0
8	2014-2015	7/1/2014	6/30/2015	5/1/2015	5/31/2015	0
9	2015-2016	7/1/2015	6/30/2016	5/1/2015	5/31/2016	1

**Relationship:**



### TitleNotEligible:

This table stores the data of entities not eligible for Title I for a given school year.



### Entity Code: District Code/Building Code/School Code/Facility Code

Original Entity Code in the Entity table holds the value for District Code/Building Code/School Code/Facility Code. The Entity Code is an identification code assigned to entities in the Educational Entity Master (EEM). The Entity Code is unique for an entity within the Entity Type.

The Entity Code assigned to the entities at the District level – Intermediate School District (ISD), Public School Academy District (PSA), Local Educational Entity District (LEA), or State – is the District Code.

The Entity Code assigned to the entities below the District Codes – School, Unique Education Provider, Non-Instructional Ancillary Facility – may also be labeled or referred to as the Building Code, School Code or the Facility Code.

The Entity Code assigned to Nonpublic Schools, Higher Education Colleges / University, Other Non-School Recipient, Other Non-Instructional Ancillary Facilities, Independent Tech School, and Other School can also be labeled as the Building Code, School Code or the Facility Code.

Simply, if the Entity Type is a district, the Entity Code is a District Code. For all other Entity Types, it may be considered a Building Code, School Code, or Facility Code.