



MICHIGAN DEPARTMENT OF NATURAL RESOURCES
Wildlife Report No. 3485
June 2008

Printed by Authority of: P.A. 451 of 1994
Total Number of Copies Printed:15
Cost per Copy:\$2.80
Total Cost:\$42.00

Michigan Department of Natural Resources



MICHIGAN DEER HARVEST SURVEY REPORT

2007 SEASONS

Brian J. Frawley

ABSTRACT

A survey of deer hunters was conducted following the 2007 hunting seasons to estimate hunter participation, harvest, and hunting effort. In 2007, an estimated 683,000 hunters spent 9.7 million days afield. Statewide, the number of people hunting deer decreased 1% and their hunting effort decreased 5% between 2006 and 2007. Hunters harvested nearly 484,000 deer, an increase of about 6% from the number taken in 2006. Statewide, 48% of hunters harvested a deer. About 24% of the hunters took an antlerless deer and 35% took an antlered buck. About 16% of deer hunters harvested two or more deer.

INTRODUCTION

The Natural Resources Commission (NRC) and Michigan Department of Natural Resources (DNR) have the authority and responsibility to protect and manage the wildlife resources of the state of Michigan. Harvest surveys are one of the management tools used to accomplish this statutory responsibility. Estimating hunter participation, harvest, and hunting effort (hereafter referred to as estimates) are the primary objectives of these surveys. Estimates derived from harvest surveys as well as information from deer harvest check stations, deer pellet group surveys, trends in deer-vehicle collisions, and population modeling are some of the methods used to monitor deer populations and establish harvest regulations.

During 2007, white-tailed deer (*Odocoileus virginianus*) could be harvested primarily during the following hunting seasons: youth, archery, regular firearm, muzzleloader, and late antlerless. In order to harvest a deer, hunters had to possess a hunting license (firearm, archery, combination, or antlerless license) (Table 1).



A contribution of Federal Aid in Wildlife Restoration, Michigan Project W-147-R

Equal Rights for Natural Resource Users

The Michigan Department of Natural Resources (MDNR) provides equal opportunities for employment and access to Michigan's natural resources. Both State and Federal laws prohibit discrimination on the basis of race, color, national origin, religion, disability, age, sex, height, weight or marital status under the Civil Rights Acts of 1964, as amended (MI PA 453 and MI PA 220, Title V of the Rehabilitation Act of 1973 as amended, and the Americans with Disabilities Act). If you believe that you have been discriminated against in any program, activity, or facility, or if you desire additional information, please write the MDNR, HUMAN RESOURCES, PO BOX 30028, LANSING MI 48909-7528, or the MICHIGAN DEPARTMENT OF CIVIL RIGHTS, STATE OF MICHIGAN PLAZA BUILDING, 1200 6TH STREET, DETROIT MI 48226, or the OFFICE FOR DIVERSITY AND CIVIL RIGHTS, US FISH AND WILDLIFE SERVICE, 4040 NORTH FAIRFAX DRIVE, ARLINGTON VA 22203.

For information or assistance on this publication, contact: MDNR, WILDLIFE DIVISION, P.O. BOX 30444, LANSING, MI 48909-7944, -or- through the internet at " <http://www.michigan.gov/dnr> ". This publication is available in alternative formats upon request. TTY/TTD (teletype): 711 (Michigan Relay Center).

IC2390-11 (06/04/2008)

A harvest tag was issued as part of the hunting license. Hunters could purchase a maximum of two licenses for taking an antlered deer (either one combination license or both a firearm and an archery license). Archery and firearm licenses included one harvest tag, while the combination license had two harvest tags. A firearm license allowed a person to take one deer with at least one antler three inches or longer (Table 1). An archery license allowed an individual to take one deer of either sex. A person with a combination license could take two deer of either sex during the archery season, two antlered deer during the firearm season, or one deer during each season (Table 1). If two antlered deer were taken, regardless of type of license, one needed to have at least one antler with four or more points (qualifying points must be at least one inch).

Antlerless licenses could be purchased in addition to archery, firearm, or combination licenses. Antlerless deer licenses allowed hunters to take deer without antlers or with antlers shorter than three inches during any season with equipment appropriate for the season. Use of each antlerless license was restricted to a single deer management unit (DMU) designated at the time of purchase. Antlerless licenses were available for most of the state except in seven DMUs (007, 027, 036, 042, 048, 066, and 131) in the Upper Peninsula (UP) and five DMUs (010, 028, 040, 043, and 083) in the Lower Peninsula (LP). Antlerless licenses were issued specifically for either public or private lands. Public land antlerless licenses were not available in all DMUs that had private land licenses. The number of licenses available in DMUs open to antlerless deer hunting was established by the NRC (Appendix A).

A private land antlerless deer hunting license was valid for taking antlerless deer only from privately-owned lands within the DMU specified on the license with permission of the landowner. A private land license was not valid on land enrolled in the Commercial Forest Act program (Commercial Forest Lands). Antlerless licenses for private lands could be purchased directly from a license vendor on a first-come, first-served basis. To purchase a private land antlerless license, hunters had to provide the contact phone number of the private landowner granting permission to deer hunt in the DMU. For northern Lower Peninsula and Upper Peninsula DMUs (except in the bovine tuberculosis management area consisting of DMUs 001, 004, 020, 060, 068, 069, 071, and 452), the landowner granting permission was required to have 40 or more contiguous acres within the DMU. Hunters were limited to a maximum of three private land antlerless deer licenses, of which no more than two could be for the Upper Peninsula and the Northern Lower Peninsula, excluding the area in the northeast Lower Peninsula where management focuses on eradication of bovine tuberculosis from the deer herd. Hunters could purchase one private land antlerless deer license each day, up to the season limit of three.

A public land antlerless deer hunting license allowed an individual to hunt for antlerless deer upon publicly-owned lands (including state, federal and county lands) open to hunting and Commercial Forest Lands within the DMU for which it was issued. A public land license was invalid on any privately-owned lands except Commercial Forest Lands. Antlerless licenses for use on public lands were allocated among people that applied for these licenses using a random drawing. In select DMUs, licenses available after the drawing was completed were made available on a first-come, first-served basis. Hunters could purchase one left-over

antlerless license for public lands per day until the license quota had been met. Hunters could not purchase both a public land and private land antlerless license on the same day.

Deer Management Assistance (DMA) permits were special antlerless permits issued to landowners where the number of antlerless licenses was insufficient to meet the objective of specific landowners (e.g., controlling disease, crop damage, or deer abundance). These permits allowed hunters to take one antlerless deer per permit during any deer season on the land where issued or adjacent private lands with the landowner's permission. To use these permits, the hunter also must have purchased a valid deer hunting license for the season in which they were hunting and abide by all other hunting regulations.

Managed Deer Hunt permits were antlerless permits that could be used during special seasons on some public lands (e.g., state parks, state wildlife areas, and some federal land). These permits were issued by special random drawings. To use these permits, the hunter also must have purchased a valid deer hunting license and abide by all other hunting regulations.

The youth firearm season was held during September 22-23 on public and private lands statewide. Youths 10-16 years of age could take one deer of either sex using a firearm license or combination license. Only an antlerless deer could be taken with an antlerless license or DMA permit. Youths participating during this season had to be accompanied by an adult at least 18 years old. Youths 10 and 11 years of age were restricted to archery-only equipment. Youths 12 and 13 years of age could use archery equipment or firearms but firearm hunting was restricted to only private land. Youth hunters could take no more than one deer during the season.

The archery season occurred statewide on public and private lands. This season was divided into an early and late season (October 1 through November 14 and December 1, 2007, through January 1, 2008). Archery licenses, antlerless licenses, combination licenses, and DMA permits could be used to take deer during the archery seasons using archery equipment.

Deer could also be taken during the special disabled firearm hunt October 20-21, 2007. Hunters could take deer on private lands or public lands requiring an access permit. Only hunters that were issued a permit to hunt from a standing vehicle, veterans with 100 percent disability as defined by the United States Department of Veterans Affairs, and legally blind people could participate in this season, and this survey did not attempt to estimate harvest or participation during this limited hunt.

The statewide regular firearm season occurred November 15-30. The muzzleloader season was held December 7-16 in the Upper Peninsula (UP), December 14-23 in the northern LP, and December 7-23 in the southern LP. Hunters were allowed to take deer on both public and private lands with firearm and combination deer hunting licenses during the regular firearm and muzzleloader seasons. Antlerless licenses (including DMA permits) also could be used during the firearm seasons.

The late antlerless firearm season occurred from December 17, 2007, through January 1, 2008. Hunters pursuing deer during this season had to have purchased an antlerless license and possess an unused antlerless harvest tag (including DMA permits) and were limited to hunting on private land. The area open to hunting during the late antlerless season was limited to 35 counties in the LP (Alcona, Allegan, Alpena, Barry, Branch, Calhoun, Cass, Clinton, Crawford, Eaton, Genesee, Gratiot, Hillsdale, Huron, Ingham, Ionia, Jackson, Kalamazoo, Kent, Lapeer, Lenawee, Livingston, Montcalm, Montmorency, Oakland, Oscoda, Otsego, Ottawa, Presque Isle, St. Joseph, Sanilac, Shiawassee, Tuscola, Van Buren, and Washtenaw).

METHODS

The Wildlife Division provided all hunters the option to report information about their deer hunting activity voluntarily via the Internet. This option was advertised through a statewide news release and on the DNR Web site, and an email message was sent to all license buyers that had provided an email address to the DNR (66,820 licensees). Hunters reported whether they hunted, the days spent afield, and whether they harvested a deer. Following the 2007 deer hunting seasons, a questionnaire was sent to 50,297 randomly selected individuals who had purchased a hunting license (firearm, archery, antlerless, or combination deer hunting licenses) and had not already voluntarily reported harvest information via the Internet. Hunters receiving the questionnaire were asked to report seasons in which they pursued deer, number of days spent afield, and number of deer harvested. Hunters were instructed not to report hunting effort and harvest associated with DMA permits because landowners obtaining these permits already were required to report the number of deer harvested to the DNR.

Estimates were based primarily on information collected from random samples of hunting license buyers. Thus, these estimates were subject to sampling errors (Cochran 1977). Estimates were calculated using a stratified random sampling design (Cochran 1977) and were presented along with their 95% confidence limit (CL). In theory, this confidence limit can be added and subtracted from the estimate to calculate the 95% confidence interval. The confidence interval is a measure of the precision associated with the estimate and implies the true value would be within this interval 95 times out of 100. Unfortunately, there are several other possible sources of error in surveys that are probably more serious than theoretical calculations of sampling error. They include failure of participants to provide answers (nonresponse bias), question wording, and question order. It is very difficult to measure these biases.

License buyers were assigned to one of four groups (strata) based on the type of license purchased and season that it was valid. The first stratum consisted of people eligible only for the archery, regular firearm, and muzzleloader hunting seasons (N = 492,487). The second stratum consisted of people eligible to hunt during archery, regular firearm, muzzleloader, and late antlerless seasons (N = 184,645). The third stratum consisted of people eligible to hunt during archery, regular firearm, muzzleloader, late antlerless, and youth seasons (N = 39,574). The fourth stratum consisted of 7,543 people that had voluntarily reported information about their hunting activity via the Internet before the random sample was

selected. The random sample consisted of 31,927 people from the first stratum, 11,457 from the second stratum, and 6,913 from the third stratum. The stratified sampling design accounted for the varying probabilities of being selected from the strata so estimates could be reliably extrapolated from the sample to all license buyers.

Estimates were calculated separately by the area where the hunt occurred. The state was divided into eight areas that closely matched the DNR's wildlife management administrative units (Figure 1). The state was also divided into three ecological regions (UP, northern LP, and southern LP). These regions generally matched major ecoregions (Albert 1995), except in the UP where two ecoregions were combined. Ecoregions are regions having similar soils, vegetation, climate, geology, and physiography. Estimates were also calculated for each DMU (Figure 2, Appendix B). Deer harvested from unknown locations were allocated among areas in proportion to the known harvest.

Statistical tests are used routinely to determine the likelihood that the differences among estimates are larger than expected by chance alone. The overlap of 95% confidence intervals was used to determine whether estimates differed. Non-overlapping 95% confidence intervals was equivalent to stating that the difference between the means was larger than would be expected 995 out of 1,000 times, if the study had been repeated (Payton et al. 2003).

Questionnaires were initially mailed during mid-January 2008, and two follow-up questionnaires were mailed to nonrespondents. To increase the number of questionnaires returned, respondents that returned their questionnaire promptly were eligible to win a prize of a firearm or bow. Although 50,297 people were sent the questionnaire, 1,221 surveys were undeliverable resulting in an adjusted sample size of 49,076. Questionnaires were returned by 31,967 of people receiving the questionnaire (65% response rate).

Estimates of harvest, hunting effort, and hunter participation are affected by the willingness of people to complete and return their questionnaires. This problem can confound comparisons of estimates made between years if response rates vary greatly. The percentage of people returning their questionnaire this year was lower than some previous years. To reduce bias caused by this lower response rate, an adjustment was made on the 2007 estimates to make them comparable to the 2006 estimates (74% response rate). Estimates of harvest, hunting effort, and hunter numbers were reduced by 2.1, 1.7, and 0.8%, respectively, to make estimates comparable to 2006. These reductions reflected the average decline noted between estimates calculated when 65 and 74% of the responses were used in 2000 and 2001 surveys.

RESULTS

In 2007, 724,239 people purchased a license to hunt deer in Michigan. The number of people buying a license in 2007 decreased 1% from 2006 (734,332 people purchased a license in 2006). Most of the people buying a license were male (91%), and the average age of license buyers was 42 years (Figure 3). Nearly 9.4% (67,739) of the license buyers were

younger than 17 years old. Less than 1% (5,420) of the license buyers was younger than 12 years old, which represented 8% of the hunters younger than 17 years old.

The number of 2007 deer harvest tags sold for all license types combined decreased less than 1% from 2006 (Table 2). License buyers were issued an average of 2.1 harvest tags. About 91% of the license buyers obtained three or fewer harvest tags, and greater than 99% had five or fewer harvest tags (Figure 4). Hunters most frequently obtained antlerless and combination harvest tags (Figure 5). About 44% of the license buyers purchased at least one antlerless license (315,550 people), and greater than 99% of antlerless license buyers purchased three or fewer antlerless licenses, public and private licenses combined (Figure 6).

The number of hunting licenses sold (including antlerless licenses) decreased by 1%, while the number of harvest tags issued was nearly unchanged between 2006 and 2007 (Table 2). The decrease in harvest tags issued was smaller than the decline in license sales because combination licenses included two harvest tags, and sales of combination licenses increased 2%.

The antlerless license quota on private lands was increased 3% from 529,700 in 2006 to 547,300 licenses in 2007 (Appendix A). The quota for public land antlerless licenses increased less than 1% from 56,400 to 56,900 between 2006 and 2007. The number of antlerless licenses sold changed little between 2006 and 2007 (Table 2).

About $94.3 \pm 0.2\%$ (682,823 hunters) of the people buying a license in 2007 actually spent time hunting deer (Table 3). Most hunters (620,192) pursued deer during the regular firearm season (Figure 7). Statewide, the number of people hunting deer during all seasons combined decreased 1%.

Hunter participation (number of hunters) decreased significantly during the archery (-3%), and regular firearm (-2%) seasons (Table 3). In contrast, significantly greater number of people hunted during the late antlerless season (52% increase). This increase likely occurred because the area open to hunting in the late antlerless season expanded from 23 counties to 35 counties between 2006 and 2007. The number of people hunting in the muzzleloader and youth seasons was nearly unchanged between 2006 and 2007.

About 43% of the days hunters spent pursuing deer throughout the state occurred in the archery season (Figure 9). About 43% of the hunting effort occurred during the regular firearm season. Nearly 13% of the hunting effort occurred in the muzzleloader and late antlerless seasons combined. Statewide, hunters devoted an average of 14.4 days afield hunting deer during all seasons combined (Table 4). Archers had the greatest number of days available to hunt deer (77 days) and devoted the greatest number of days afield ($\bar{x} = 14.3$ days/hunter) (Figure 10, Table 4). For all seasons combined, hunting effort statewide declined by 5% between 2006 and 2007 (Table 3). Hunting effort decreased significantly during the archery (-7%), muzzleloader (-7%), and regular firearm (-4%) seasons, while increasing 51% during the late antlerless season. Hunting effort during the youth season was not significantly different between 2006 and 2007.

Nearly 484,000 deer were harvested in 2007, an increase of about 6% from the number taken in 2006 (Figure 11, Tables 5-6). Statewide, the harvest of antlerless deer increased 14%, but harvest of antlered deer was nearly unchanged from last year (Table 5). Between 2006 and 2007, deer harvest increased significantly during the late antlerless (93%), youth (14%), and regular firearm (4%) seasons. Harvest in the muzzleloader and archery seasons did not change significantly between 2006 and 2007.

About 58% of the deer harvested (sexes combined) in 2007 were taken during the regular firearm season (Figure 13). Nearly 49% of the antlerless deer and 64% of the antlered bucks were harvested in the regular firearm season. Hunters took 26% of the harvested deer (sexes combined) during archery season. During the archery season, hunters took 25% of the antlerless deer and 27% of the antlered bucks harvested. Few antlered bucks (6%) were taken in the muzzleloader season. The muzzleloader and antlerless seasons combined accounted for about 24% of the antlerless deer harvested.

About 86% of the animals harvested (sexes combined) in 2007 were taken on private lands (Table 7). Statewide, most of the antlerless deer (90%) and antlered bucks (83%) were harvested on private lands. Some noteworthy changes between 2006 and 2007 included an increased harvest of antlered bucks (12%) on public lands and an increased harvest of antlerless deer (14%) on private lands.

Statewide, 48% of the deer hunters harvested at least one deer (all deer seasons and sexes combined) in 2007 (Figure 14, Table 8). About 24% of the hunters took an antlerless deer, and 35% took an antlered buck. About 16% of deer hunters harvested two or more deer.

Hunters were most successful in taking a deer during the regular firearm season (Figure 15, Table 9); 38% of the hunters in this season took a deer. Nearly 27% of the hunters took an antlered buck and 15% harvested an antlerless deer during the regular firearm season. Hunter success was lowest in the muzzleloader season (22% successful).

ACKNOWLEDGEMENTS

I thank all the deer hunters that provided information. Autumn Feldpausch, Theresa Riebow, Diane Rogers, Dona Rumrill, and Becky Walker completed data entry. Supriya Reddy and Chris Larson updated the internet harvest reporting application. The figure of deer management units was prepared by Marshall Strong. Mike Bailey, Rod Clute, Pat Lederle, Cheryl Nelson, Doug Reeves, and Sara Schaefer reviewed a previous version of this report.

LITERATURE CITED

- Albert, D. A. 1995. Regional landscape ecosystems of Michigan, Minnesota, and Wisconsin: a working map and classification. General Technical Report NC-178. U.S. Department of Agriculture, Forest Service, North Central Forest Experimental Station, St. Paul, Minnesota, USA.
- Cochran, W. G. 1977. Sampling techniques. John Wiley & Sons, New York, USA.

Payton, M. E., M. H. Greenstone, and N. Schenker. 2003. Overlapping confidence intervals or standard error intervals: what do they mean in terms of statistical significance? *Journal of Insect Science* 3:34.

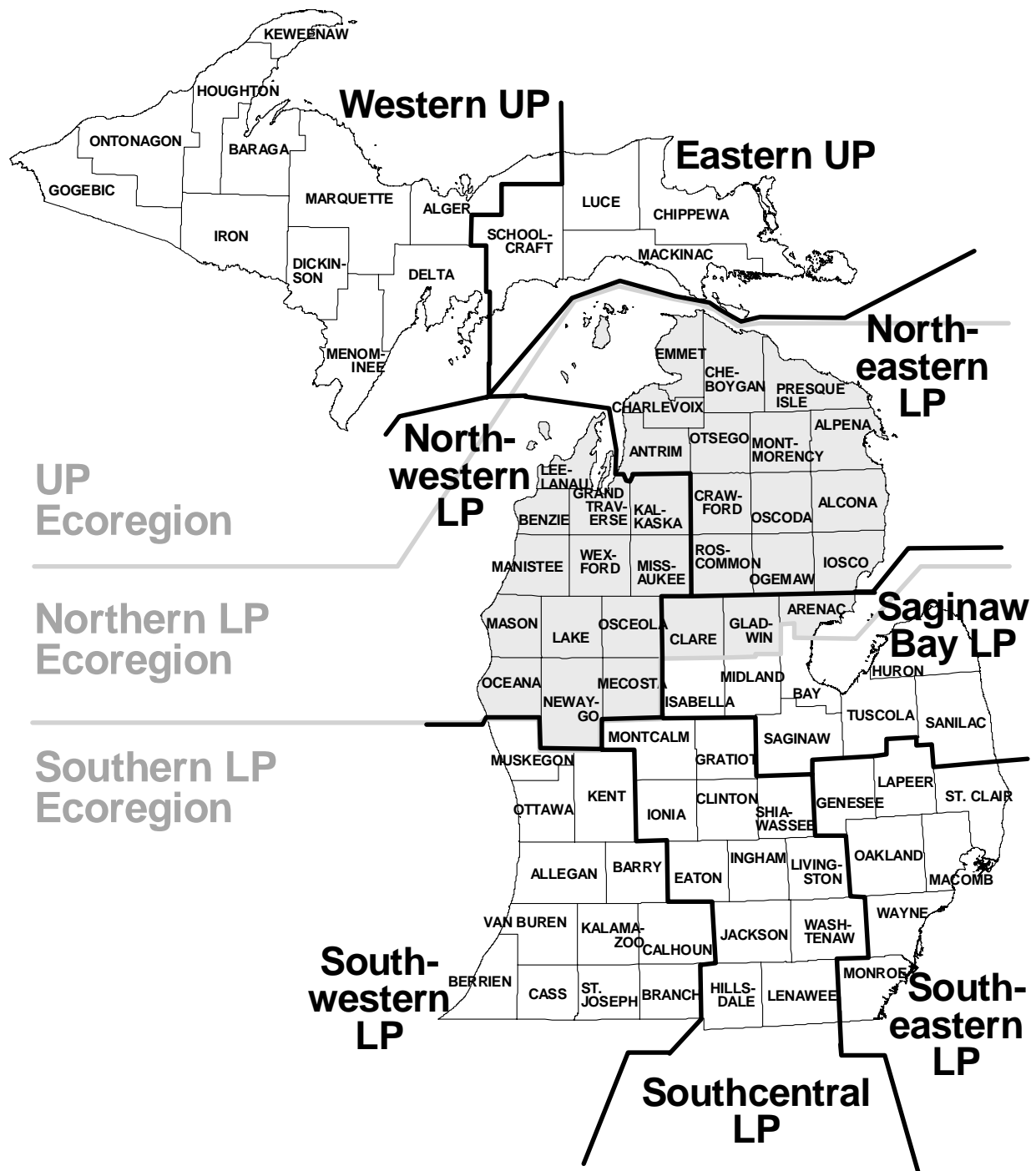


Figure 1. Areas used to summarize deer harvest in Michigan for the 2007 hunting seasons.

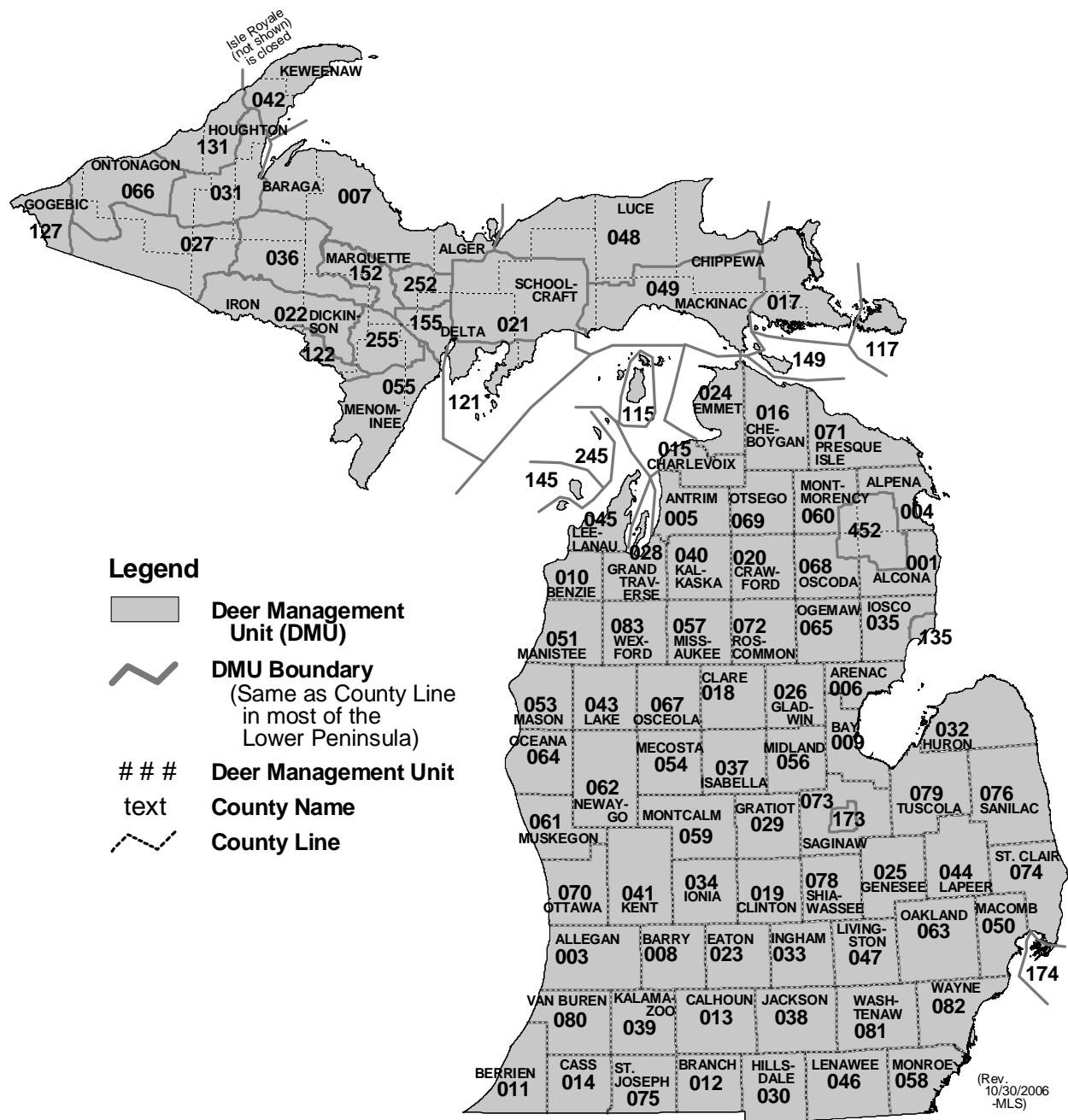


Figure 2. Deer Management Units in Michigan for the 2007 hunting seasons.

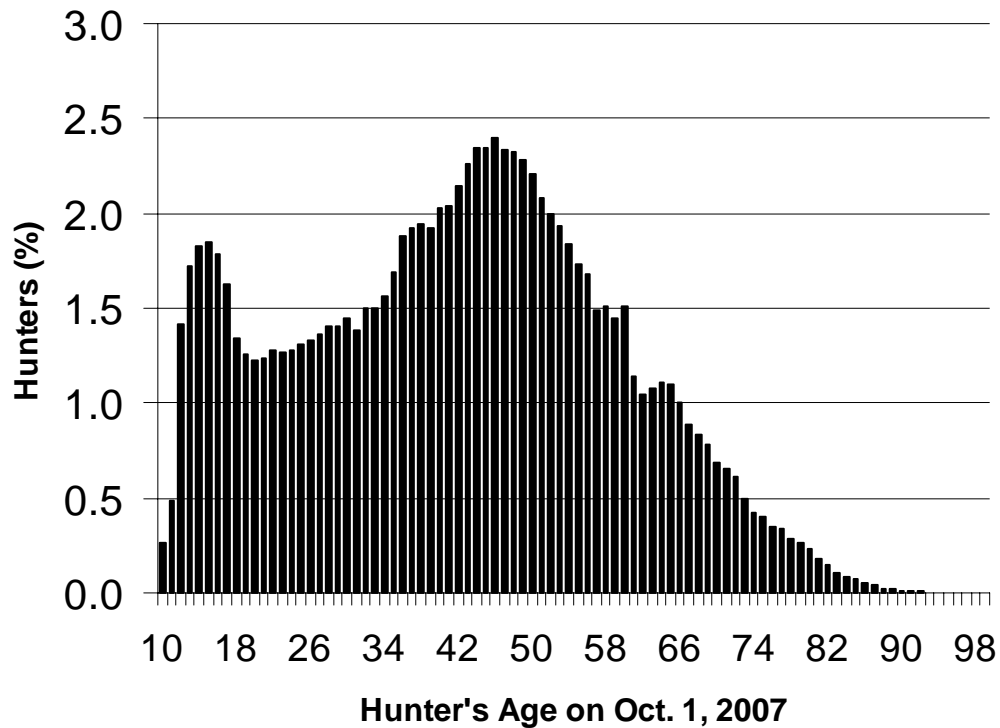


Figure 3. Age of people that purchased a deer hunting license in Michigan for the 2007 hunting seasons (\bar{x} = 42 years).

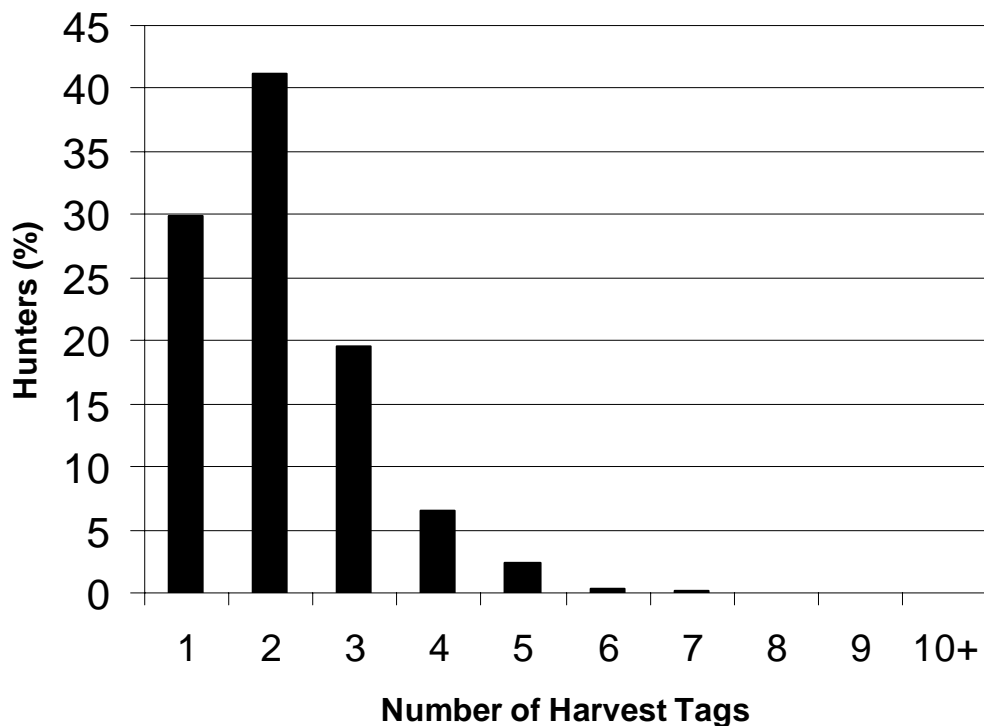


Figure 4. Number of harvest tags (all license and tag types) issued per person for hunting deer in Michigan during the 2007 hunting seasons (\bar{x} = 2.1 tags). Licenses were purchased by 724,239 people.

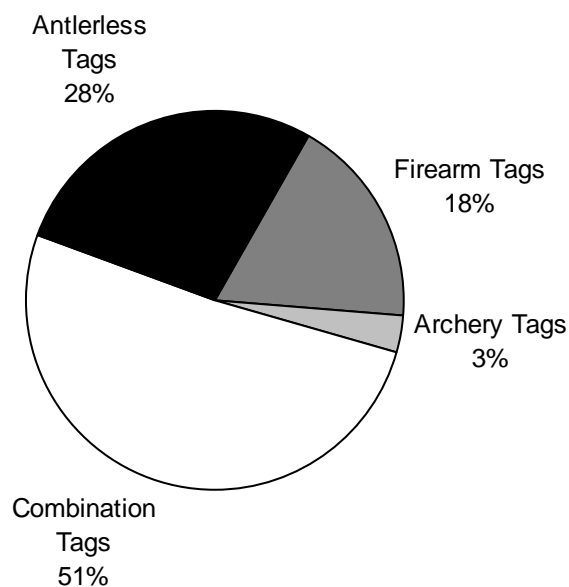


Figure 5. Types of harvest tags issued for deer hunting in Michigan during the 2007 hunting seasons.

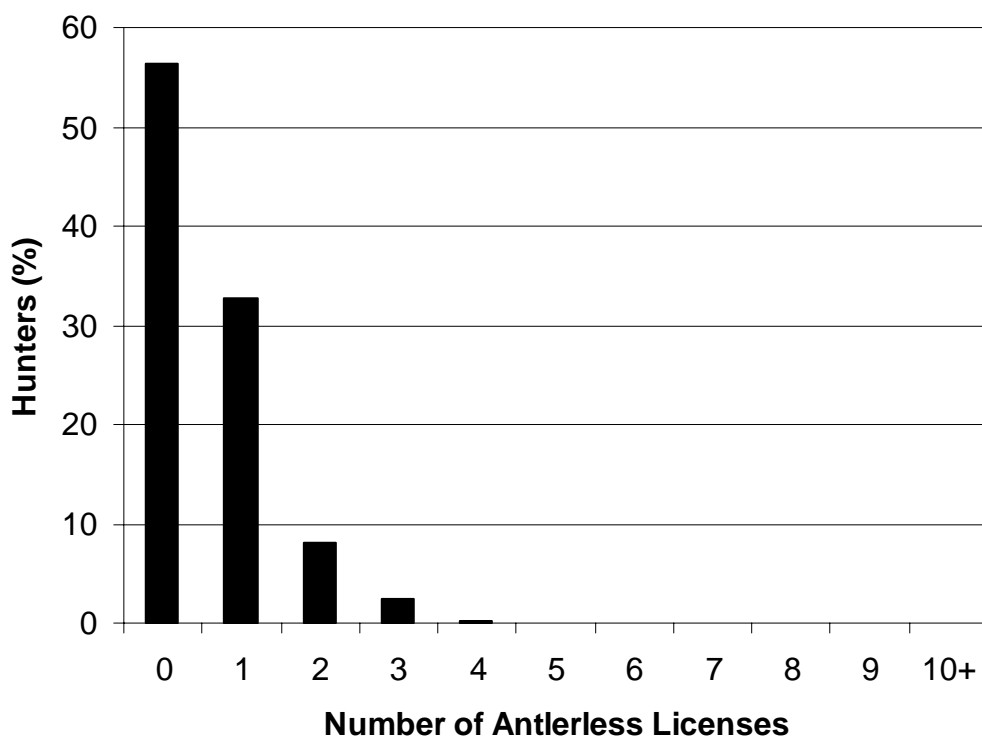


Figure 6. Percentage of deer hunting license buyers (all license types) purchasing an antlerless license in Michigan, 2007. Antlerless licenses were purchased by 315,550 of 724,239 people (44%) buying deer hunting licenses.

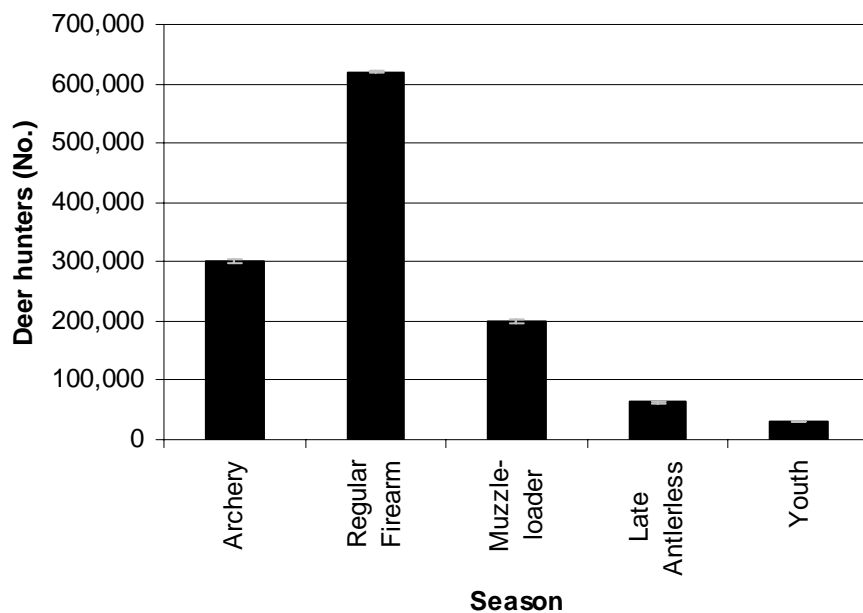


Figure 7. Number of people hunting deer in Michigan during the 2007 hunting seasons. Error bars represent the 95% confidence limits.

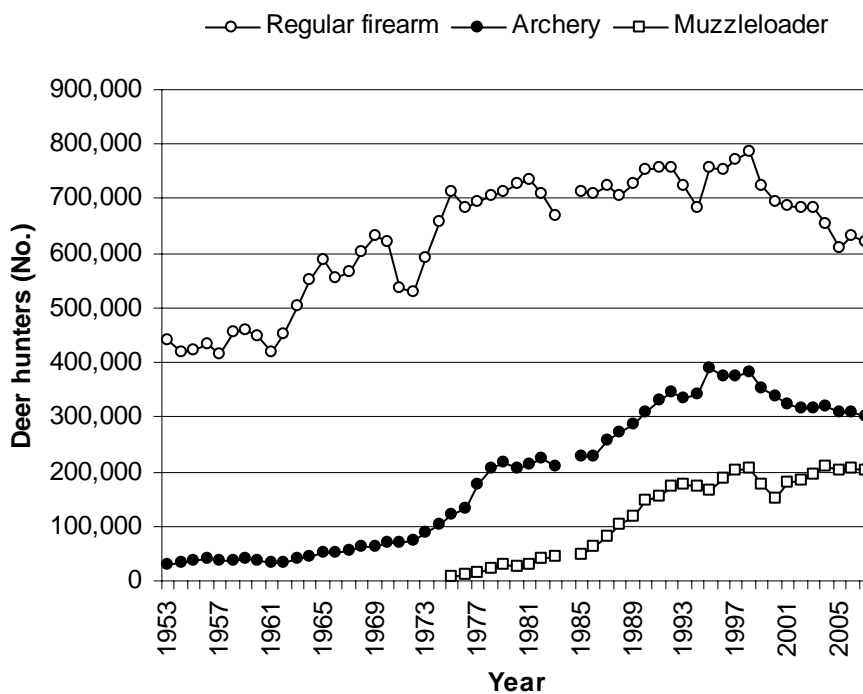


Figure 8. Number of people hunting deer in Michigan during the regular firearm, archery, and muzzleloader seasons, 1953-2007.

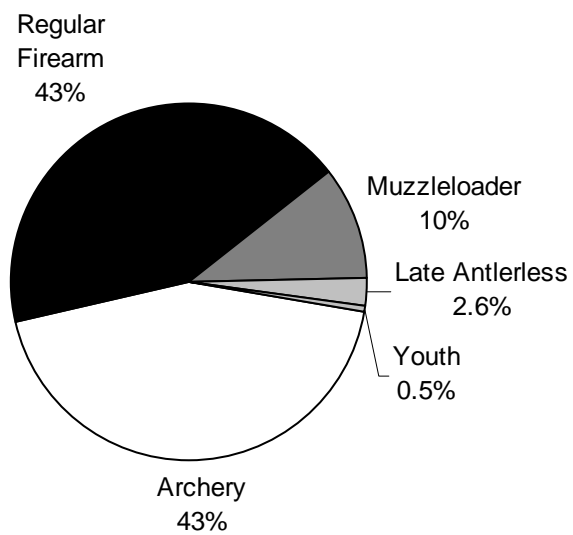


Figure 9. Distribution of hunting effort among deer hunting seasons in Michigan, 2007.

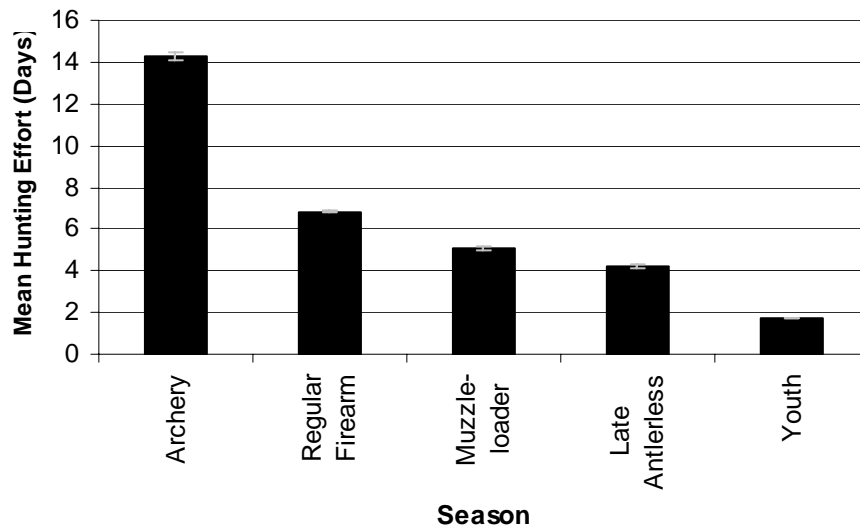


Figure 10. Mean number of days spent hunting deer in Michigan during the 2007 hunting seasons. Error bars represent the 95% confidence limits.

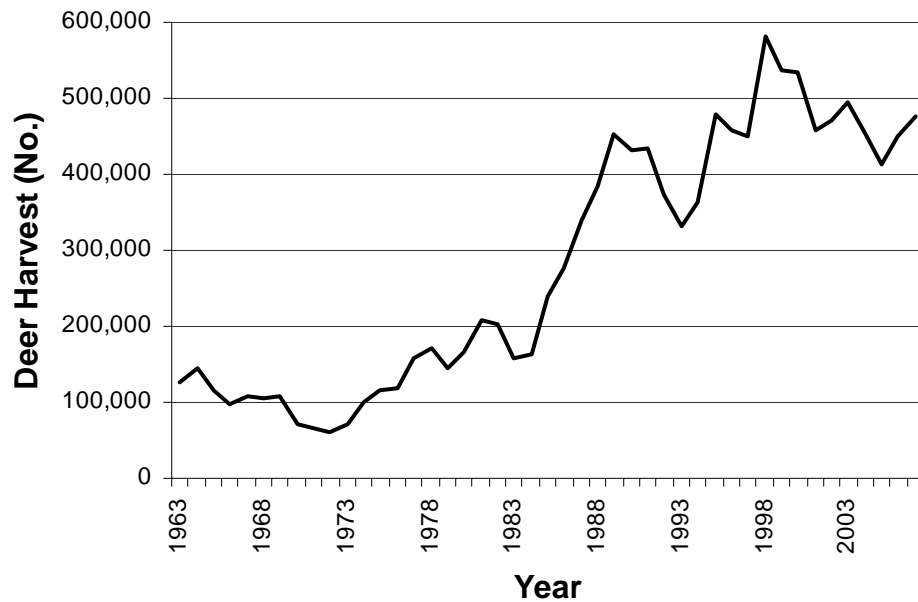


Figure 11. Number of deer harvested in Michigan's hunting seasons, 1963-2007. Harvest from all seasons and for all deer sexes was combined.

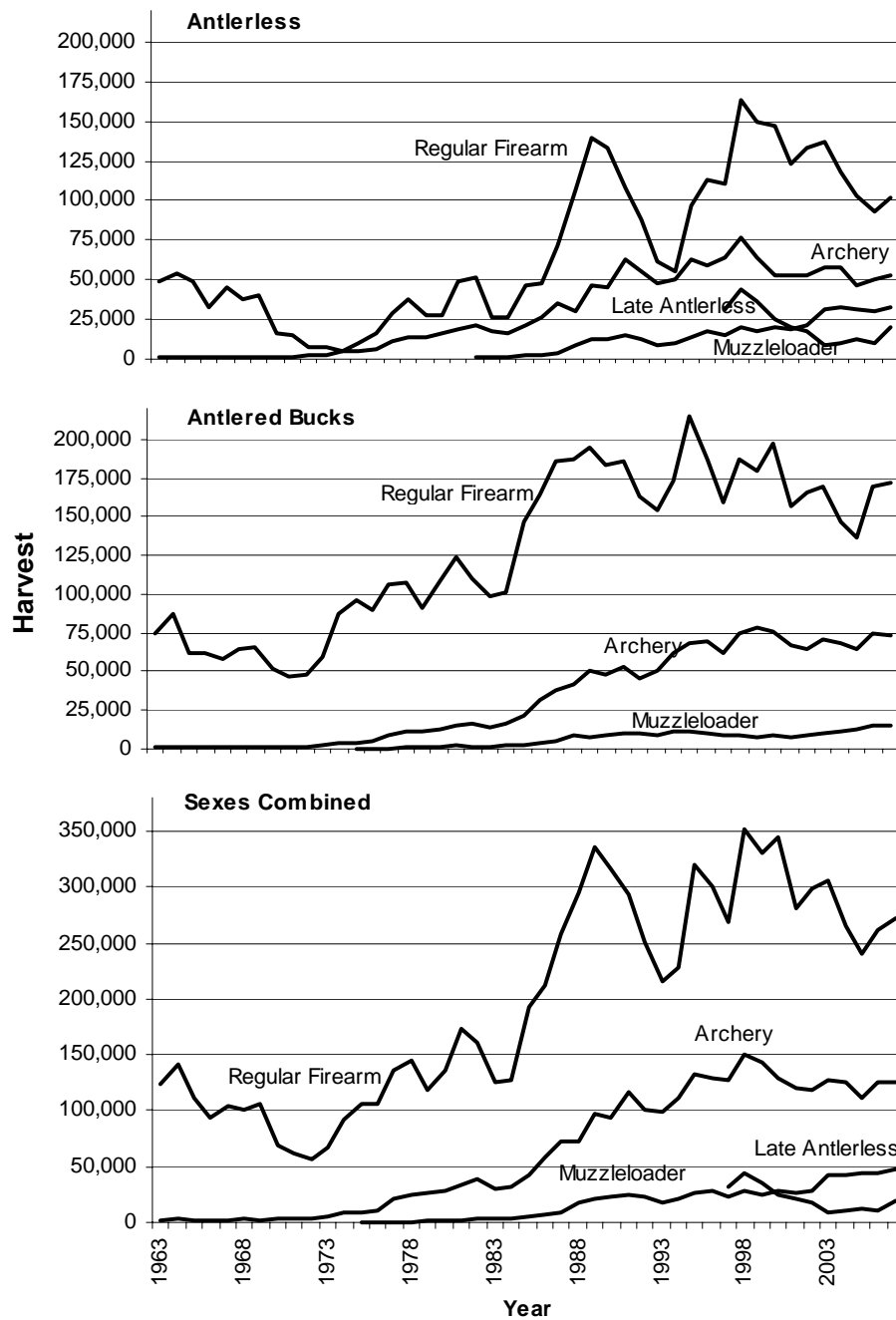


Figure 12. Number of deer harvested in Michigan's hunting seasons, 1963-2007. Harvests for early antlerless, early antlerless in DMU 055, and youth seasons were not shown.

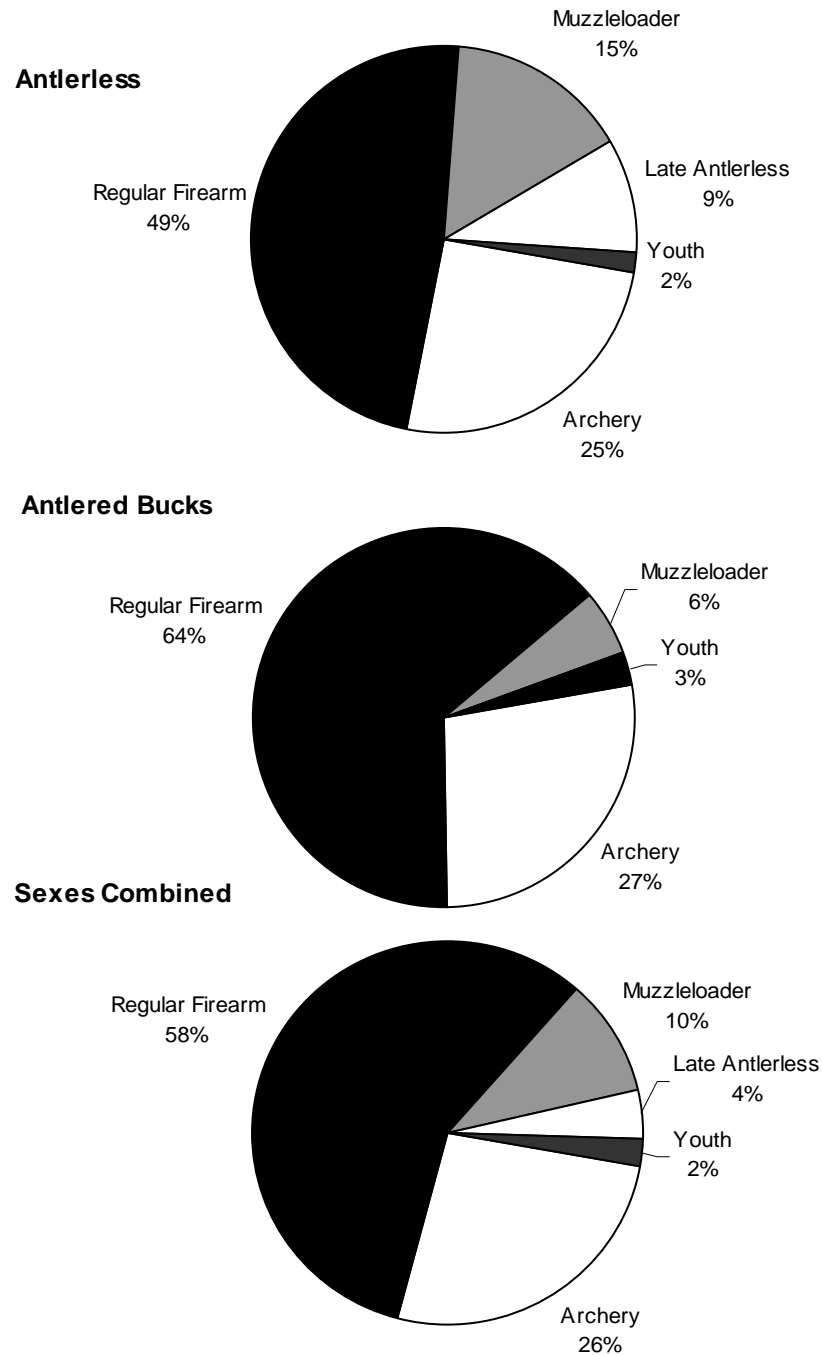


Figure 13. Distribution of harvest among deer hunting seasons in Michigan, 2007. Antlered deer had antlers at least 3 inches in length; antlerless deer included deer without antlers and deer with antlers less than 3 inches in length.

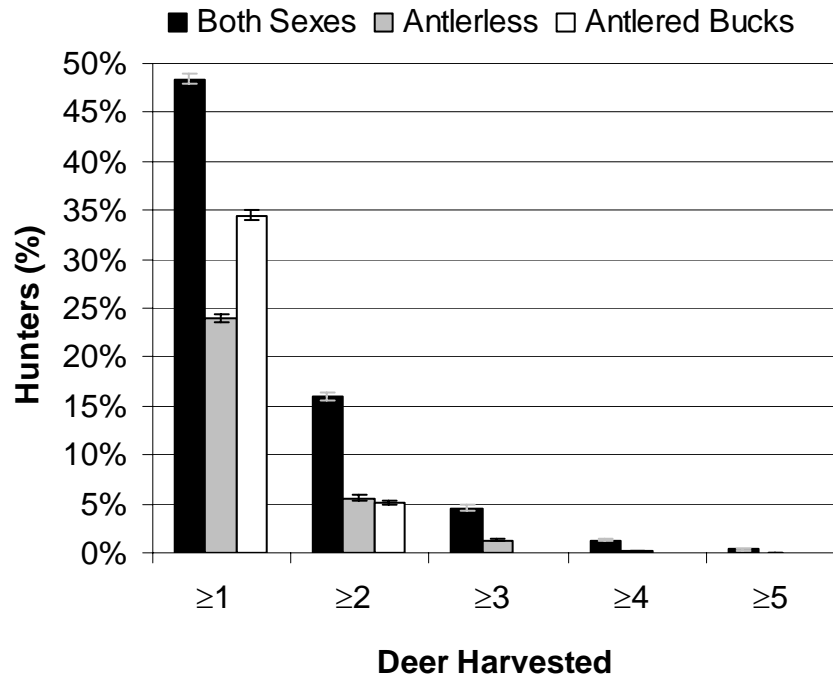


Figure 14. Percentage of hunters harvesting a deer in Michigan, 2007. Error bars represent the 95% confidence limits.

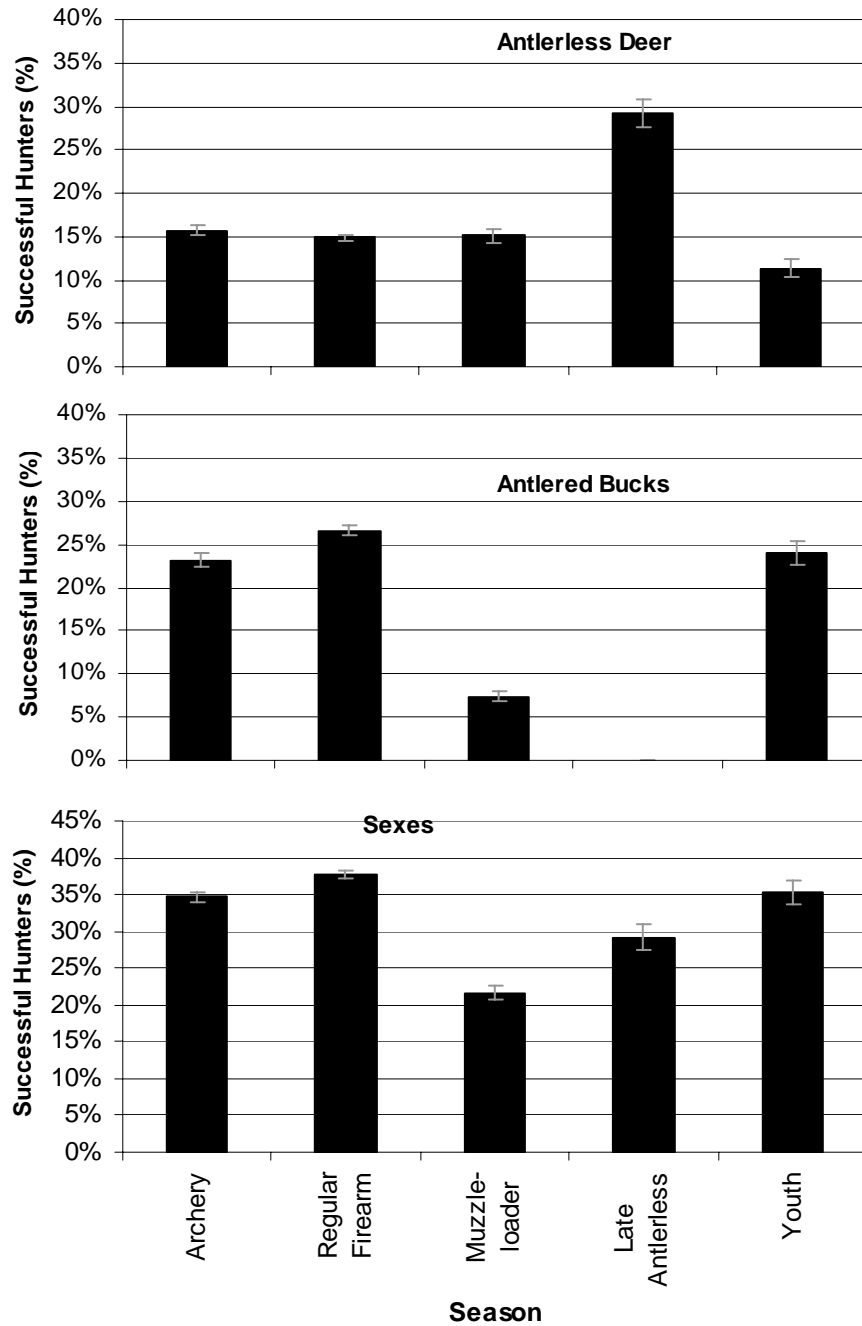


Figure 15. Percentage of hunters harvesting a deer in Michigan's deer hunting seasons, 2007. Error bars represent the 95% confidence limits. Antlered deer had antlers at least 3 inches in length; antlerless deer included deer without antlers and deer with antlers less than 3 inches in length.

Table 1. Kind of deer that could be taken during the 2007 Michigan deer hunting seasons for each combination of season and hunting license.

Type of license (harvest tag) or permit	Season	Kind of deer that could be harvested ^a
Archery License	Archery seasons	Antlerless or antlered deer ^b
Firearm License	Regular Firearm, Youth ^c , or Muzzleloading seasons	Antlered deer only ^b
Combination License ^d (Regular harvest tag)	Archery season	Antlerless or antlered deer
Combination License ^d (Regular harvest tag)	Regular Firearm, Youth, or Muzzleloading seasons	Antlered deer only
Combination License ^d (Restricted harvest tag)	Archery seasons	Antlerless deer or a deer that has at least 1 antler with 4 or more antler points, 1 or more inches in length
Combination License ^d (Restricted harvest tag)	Regular Firearm, Youth, or Muzzleloading seasons	A deer that has at least 1 antler with 4 or more antler points, 1 or more inches in length
Antlerless License ^e	All seasons	Antlerless deer only
Deer Management Assistance (DMA) permit ^f	All seasons	Antlerless deer only
Managed Deer Hunt permit ^g	Specified season	Antlerless deer only

^aAntlered deer had antlers at least 3 inches in length; antlerless deer included deer without antlers and deer with antlers less than 3 inches in length. Hunters could harvest a maximum of 2 antlered deer per year (all seasons combined).

^bIf a person took 2 antlered deer during all seasons combined, one of the antlered deer must have had at least 1 antler with 4 or more antler points, each point being 1 or more inches in length.

^cAll youths 10 and 11 years of age were restricted to archery-only hunting. Hunters could harvest only 1 deer in the youth season.

^dCombination licenses included two harvest tags (i.e., regular and restricted harvest tags).

^eAlthough antlerless licenses were only valid for taking an antlerless deer, a person with a valid antlerless deer hunting license that killed a male deer with antlers less than 3 inches in length can choose to tag the male deer with any deer hunting license (firearm, archery or either combination license).

^fPermits issued to landowners in areas where the number of antlerless licenses was insufficient to meet the objective of specific landowners (i.e., controlling disease or the deer population). To use these permits, the hunter must also have purchased a firearm, archery, combination, or antlerless deer license for the season in which they were hunting.

^gPermits for special hunts on designated public lands (e.g., some state parks, game areas, and federal property). These permits valid only during specific dates, which varied among areas. Permits issued to applicants using a lottery (i.e., random selection). To use these permits, the hunter must also have purchased a valid deer hunting license.

Table 2. Number of Michigan deer licenses purchased and harvest tags issued, 2005-2007.

Licenses or Harvest Tags	Number Purchased or Issued			Change Between 2006 and 2007 (%)
	2005	2006	2007	
Firearm Licenses				
Resident	244,210	247,950	231,339	-6.7
Non-resident	12,107	12,462	12,335	-1.0
Senior	31,967	33,402	32,733	-2.0
Military	559	693	833	20.2
Subtotal	288,843	294,507	277,240	-5.9
Archery Licenses				
Resident	44,486	44,882	38,832	-13.5
Non-resident	2,853	2,899	2,895	-0.1
Junior	7,653	5,374	4,583	-14.7
Senior	3,103	3,493	3,443	-1.4
Military	161	252	226	-10.3
Subtotal	58,256	56,900	49,979	-12.2
Combination Licenses ^a				
Resident	294,660	301,160	303,547	0.8
Non-resident	1,637	1,815	1,886	3.9
Junior	33,179	49,475	51,290	3.7
Senior	30,050	32,717	36,358	11.1
Military	649	794	1,129	42.2
Subtotal	360,175	385,961	394,210	2.1
Antlerless Licenses				
Resident	484,734	409,026	409,584	0.1
Non-resident	3,413	3,113	3,013	-3.2
Junior	4,084	5,217	4,678	-10.3
Military	486	523	851	62.7
Deer Management Assistance	5,182	7,099	9,512	34.0
Managed Deer Hunt	1,156	1,185	974	-17.8
Subtotal	499,055	426,163	428,612	0.6
Total Licenses Sold	1,206,329	1,163,531	1,150,041	-1.2
Harvest Tags Issued				
Firearm	288,843	294,507	277,240	-5.9
Archery	58,256	56,900	49,979	-12.2
Combination	720,350	771,922	788,420	2.1
Antlerless	499,055	426,163	428,612	0.6
Total Harvest Tags	1,566,504	1,549,492	1,544,251	-0.3

^aCombination licenses included two harvest tags. Other license types had one harvest tag.

Table 3. Number of deer hunters and hunting effort in Michigan by hunting season, 2006-2007.

Season and Area	Number of hunters ^a				Hunting effort (days)			
	2006	2007	95% CL ^b	Change from 2006 to 2007 (%)	2006	2007	95% CL ^b	Change from 2006 to 2007 (%)
Archery								
West UP	20,637	20,238	1,283	-1.9	261,209	225,343	19,058	-13.7
East UP	7,014	6,862	760	-2.2	74,643	68,266	10,215	-8.5
NE LP	45,949	43,216	1,858	-5.9	479,109	453,315	26,445	-5.4
NW LP	57,689	58,290	2,111	1.0	700,984	709,737	34,833	1.2
Sag. Bay	56,708	53,794	2,053	-5.1	742,725	662,877	33,844	-10.8*
SW LP	56,026	54,201	2,057	-3.3	832,511	747,746	36,492	-10.2*
SC LP	68,333	64,354	2,197	-5.8	999,408	902,039	40,798	-9.7*
SE LP	34,788	35,340	1,690	1.6	463,559	465,984	29,290	0.5
UP	27,421	26,993	2,586	-1.6	335,852	293,609	21,623	-12.6
NLP	119,931	116,274	3,630	-3.0	1,420,248	1,361,855	47,420	-4.1
SLP	189,185	182,346	3,526	-3.6	2,798,048	2,579,843	68,290	-7.8*
Statewide ^c	309,140	300,254	3,846	-2.9*	4,554,148	4,235,307	86,193	-7.0*
Regular Firearm								
West UP	73,886	71,337	2,299	-3.5	557,523	502,330	19,455	-9.9*
East UP	24,038	23,862	1,394	-0.7	167,321	158,553	10,779	-5.2
NE LP	111,863	112,031	2,833	0.2	689,991	675,269	21,339	-2.1
NW LP	117,409	115,983	2,817	-1.2	706,286	692,945	21,550	-1.9
Sag. Bay	96,987	97,916	2,682	1.0	586,104	600,467	20,424	2.5
SW LP	97,785	95,637	2,615	-2.2	655,776	628,012	21,528	-4.2
SC LP	115,483	109,987	2,685	-4.8	734,595	685,265	22,253	-6.7*
SE LP	42,403	43,337	1,861	2.2	251,975	251,402	13,053	-0.2
UP	97,508	94,696	1,475	-2.9	724,843	660,883	22,241	-8.8*
NLP	256,799	253,842	2,848	-1.2	1,582,748	1,549,580	32,286	-2.1
SLP	312,623	307,224	3,318	-1.7	2,041,980	1,983,781	37,730	-2.9
Statewide ^c	630,379	620,192	2,632	-1.6*	4,349,572	4,194,243	54,668	-3.6*

^aExcluded people that did not hunt during the season.

^b95% confidence limit for the 2007 estimate.

^cNumber of hunters does not add up to statewide total because hunters can hunt in more than one area.

*P<0.005.

Table 3 (continued). Number of deer hunters and hunting effort in Michigan by hunting season, 2006-2007.

Season and Area	Number of hunters ^a				Hunting effort (days)			
	2006	2007	95% CL ^b	Change from 2006 to 2007 (%)	2006	2007	95% CL ^b	Change from 2006 to 2007 (%)
Muzzleloader								
West UP	18,101	14,520	1,096	-19.8*	98,516	67,881	5,813	-31.1*
East UP	6,978	6,237	729	-10.6	34,700	30,206	3,976	-13.0
NE LP	25,060	23,555	1,404	-6.0	103,384	96,425	6,593	-6.7
NW LP	25,612	25,964	1,459	1.4	110,149	107,275	7,166	-2.6
Sag. Bay	34,403	35,214	1,696	2.4	157,100	156,444	9,159	-0.4
SW LP	41,126	41,427	1,820	0.7	227,313	216,619	11,660	-4.7
SC LP	45,965	43,829	1,849	-4.6	235,454	222,682	11,803	-5.4
SE LP	19,732	19,881	1,287	0.8	103,540	98,413	7,804	-5.0
UP	24,926	20,635	1,302	-17.2*	133,216	98,087	7,043	-26.4*
NLP	59,612	57,524	2,124	-3.5	250,158	237,203	10,472	-5.2
SLP	127,928	128,428	2,904	0.4	686,783	660,655	20,130	-3.8
Statewide ^c	206,157	201,034	3,490	-2.5	1,070,157	995,945	23,849	-6.9*
Late Antlerless								
West UP	0	0	0		0	0	0	
East UP	0	0	0		0	0	0	
NE LP	3,881	3,501	552	-9.8	15,245	13,889	2,768	-8.9
NW LP	0	0	0		0	0	0	
Sag. Bay	5,466	7,506	799	37.3*	20,938	26,961	3,657	28.8
SW LP	15,120	19,588	1,251	29.5*	63,507	83,265	6,795	31.1*
SC LP	12,897	26,185	1,419	103.0*	52,550	105,289	7,529	100.4*
SE LP	3,983	5,863	707	47.2*	16,161	24,512	3,610	51.7*
UP	0	0	0		0	0	0	
NLP	3,881	3,501	552	-9.8	15,245	13,889	2,768	-8.9
SLP	37,167	58,671	1,919	57.9*	153,155	240,027	11,370	56.7*
Statewide ^c	41,347	62,904	1,959	52.1*	168,400	253,915	11,779	50.8*

^aExcluded people that did not hunt during the season.

^b95% confidence limit for the 2007 estimate.

^cNumber of hunters does not add up to statewide total because hunters can hunt in more than one area.

*P<0.005.

Table 3 (continued). Number of deer hunters and hunting effort in Michigan by hunting season, 2006-2007.

Season and Area	Number of hunters ^a				Hunting effort (days)			
	2006	2007	95% CL ^b	Change from 2006 to 2007 (%)	2006	2007	95% CL ^b	Change from 2006 to 2007 (%)
Youth								
West UP	1,416	1,439	212	1.6	2,383	2,504	384	5.1
East UP	337	418	116	24.2	579	719	204	24.3
NE LP	2,615	3,416	318	30.6*	4,539	5,878	586	29.5*
NW LP	5,232	5,337	387	2.0	8,650	9,018	721	4.3
Sag. Bay	6,281	5,981	406	-4.8	10,561	10,194	767	-3.5
SW LP	5,129	4,835	371	-5.7	8,162	7,957	668	-2.5
SC LP	6,637	6,783	427	2.2	10,833	11,075	791	2.2
SE LP	2,615	3,211	309	22.8	4,362	5,328	551	22.1
UP	1,753	1,858	240	6.0	2,961	3,223	435	8.8
NLP	9,248	10,171	495	10.0	15,601	17,425	1,005	11.7
SLP	19,132	19,161	566	0.2	31,507	32,024	1,348	1.6
Statewide ^c	30,111	31,236	459	3.7*	50,069	52,672	1,741	5.2
All Seasons								
West UP	81,203	79,594	2,408	-2.0	919,117	797,756	34,336	-13.2*
East UP	27,778	27,740	1,499	-0.1	277,074	257,632	19,618	-7.0
NE LP	127,440	127,052	2,972	-0.3	1,291,935	1,244,568	44,547	-3.7
NW LP	136,093	134,962	2,982	-0.8	1,526,142	1,519,228	52,900	-0.5
Sag. Bay	116,720	116,238	2,867	-0.4	1,517,655	1,457,063	53,886	-4.0
SW LP	114,617	112,928	2,788	-1.5	1,787,380	1,683,531	60,971	-5.8
SC LP	138,047	132,645	2,883	-3.9	2,033,149	1,926,388	66,450	-5.3
SE LP	58,664	59,706	2,145	1.8	839,895	845,917	44,089	0.7
UP	107,962	106,231	2,710	-1.6	1,196,190	1,055,388	39,545	-11.8*
NLP	293,613	289,596	3,710	-1.4	3,283,848	3,180,077	74,545	-3.2
SLP	371,444	365,993	3,535	-1.5	5,712,308	5,496,618	110,483	-3.8
Statewide ^c	691,073	682,962	1,700	-1.2*	10,192,346	9,732,083	139,513	-4.5*

^aExcluded people that did not hunt during the season.^b95% confidence limit for the 2007 estimate.^cNumber of hunters does not add up to statewide total because hunters can hunt in more than one area.

*P<0.005.

Table 4. Mean number of days hunters spent hunting deer (\bar{x} hunting effort) in Michigan by hunting season, 2007.^a

Area	Season											
	Archery		Regular Firearm		Muzzle-loader		Late Antlerless		Youth		All Seasons	
	\bar{x} days	95% CL ^b	\bar{x} days	95% CL ^b	\bar{x} days	95% CL ^b	\bar{x} days	95% CL ^b	\bar{x} days	95% CL ^b	\bar{x} days	95% CL ^b
West UP	11.2	0.6	7.0	0.1	4.8	0.2	0.0	0.0	1.7	0.1	10.0	0.3
East UP	10.1	1.0	6.6	0.2	4.9	0.3	0.0	0.0	1.7	0.2	9.3	0.5
NE LP	10.5	0.4	6.0	0.1	4.1	0.1	4.0	0.5	1.7	<0.1	9.8	0.3
NW LP	12.2	0.4	6.0	0.1	4.2	0.2	0.0	0.0	1.7	<0.1	11.2	0.3
Sag. Bay	12.4	0.4	6.1	0.1	4.5	0.1	3.7	0.3	1.7	<0.1	12.5	0.3
SW LP	13.9	0.4	6.6	0.1	5.3	0.2	4.4	0.2	1.6	<0.1	14.9	0.4
SC LP	14.2	0.4	6.3	0.1	5.2	0.2	4.2	0.2	1.6	<0.1	14.6	0.4
SE LP	13.3	0.5	5.8	0.2	5.0	0.2	4.2	0.4	1.7	<0.1	14.2	0.5
UP	11.0	0.5	7.0	0.1	4.8	0.2	0.0	0.0	1.7	0.1	9.9	0.3
NLP	11.8	0.3	6.1	0.1	4.2	0.1	4.0	0.5	1.7	<0.1	11.0	0.2
SLP	14.3	0.2	6.5	0.1	5.2	0.1	4.2	0.1	1.7	<0.1	15.1	0.2
Statewide	14.3	0.2	6.8	<0.1	5.1	0.1	4.2	0.1	1.7	<0.1	14.4	0.2

^aExcluded people that did not hunt during the season.

^b95% confidence limit.

Table 5. Number of deer harvested in Michigan, 2005-2007.

Season or permit	Type of deer	2005	2006	2007	Change from 2006 to 2007 (%)
Season					
Archery	Antlerless	46,725	49,839	52,666	5.7
	Antlered bucks	64,784	75,195	73,531	-2.2
	Sexes combined	111,508	125,035	126,197	0.9
Regular firearm	Antlerless	103,439	92,483	101,413	9.7*
	Antlered bucks	137,158	169,049	171,410	1.4
	Sexes combined	240,597	261,532	272,823	4.3*
Muzzleloader	Antlerless	31,823	29,726	32,094	8.0
	Antlered bucks	12,919	14,722	15,080	2.4
	Sexes combined	44,742	44,448	47,174	6.1
Late antlerless	Antlerless	12,015	10,122	19,503	92.7*
Youth	Antlerless	1,553	2,793	3,490	25.0*
	Antlered bucks	3,197	6,745	7,408	9.8
	Sexes combined	4,750	9,537	10,898	14.3*
Special permits ^a	Antlerless	3,640	5,295	7,389	39.5
Grand Total	Antlerless	199,194	190,257	216,555	13.8*
	Antlered bucks	218,057	265,711	267,429	0.6
	Sexes combined	417,251	455,969	483,984	6.1*

^aIncludes deer harvested with DMA permits. These permits could be used during any deer hunting season.

*P<0.005.

Table 6. Number of deer harvested in Michigan by hunting season, 2006-2007.^a

Season and Area	Antlerless				Antlered Bucks				Sexes Combined			
	2006 Harvest	2007 Harvest	95% CL ^b	Change from 2006 to 2007 (%)	2006 Harvest	2007 Harvest	95% CL ^b	Change from 2006 to 2007 (%)	2006 Harvest	2007 Harvest	95% CL ^b	Change from 2006 to 2007 (%)
Archery												
West UP	3,690	4,736	738	28.4	3,665	3,888	584	6.1	7,356	8,626	1,003	17.3
East UP	1,050	960	312	-8.6	948	909	277	-4.0	1,997	1,869	432	-6.4
NE LP	5,323	4,893	670	-8.1	5,982	6,249	750	4.5	11,306	11,142	1,068	-1.4
NW LP	7,615	7,611	826	0.0	11,746	10,948	1,002	-6.8	19,361	18,560	1,371	-4.1
Sag. Bay	8,553	9,236	971	8.0	12,652	12,170	1,064	-3.8	21,204	21,406	1,576	1.0
SW LP	7,949	8,243	960	3.7	13,604	14,228	1,173	4.6	21,553	22,470	1,673	4.3
SC LP	11,251	11,744	1,112	4.4	19,030	17,512	1,309	-8.0	30,280	29,256	1,901	-3.4
SE LP	4,409	5,242	733	18.9	7,568	7,625	857	0.8	11,976	12,867	1,248	7.4
UP	4,740	5,696	801	20.2	4,613	4,797	646	4.0	9,354	10,494	1,092	12.2
NLP	16,028	15,643	1,202	-2.4	21,393	20,711	1,372	-3.2	37,422	36,355	1,942	-2.9
SLP	29,071	31,327	1,824	7.8	49,190	48,023	2,154	-2.4	78,259	79,347	3,116	1.4
Statewide	49,839	52,666	2,333	5.7	75,195	73,531	2,642	-2.2	125,035	126,197	3,841	0.9
Regular Firearm												
West UP	6,263	7,441	856	18.8	22,110	26,496	1,529	19.8*	28,378	33,916	1,863	19.5**
East UP	1,042	876	268	-15.9	4,982	6,605	761	32.6*	6,026	7,473	834	24.0
NE LP	9,981	11,229	1,033	12.5	26,082	25,948	1,524	-0.5	36,068	37,166	1,943	3.0
NW LP	7,729	9,542	952	23.5*	28,028	26,706	1,550	-4.7	35,765	36,231	1,891	1.3
Sag. Bay	16,034	19,787	1,403	23.4*	25,545	25,839	1,541	1.2	41,576	45,637	2,278	9.8
SW LP	19,914	19,370	1,436	-2.7	23,835	22,872	1,477	-4.0	43,742	42,258	2,249	-3.4
SC LP	26,002	27,159	1,713	4.4	30,186	28,689	1,629	-5.0	56,179	55,875	2,569	-0.5
SE LP	5,519	6,009	772	8.9	8,282	8,255	867	-0.3	13,799	14,267	1,250	3.4
UP	7,304	8,317	897	13.9	27,092	33,102	1,708	22.2*	34,404	41,390	2,042	20.3*
NLP	21,523	25,706	1,570	19.4*	61,427	59,088	2,297	-3.8	82,962	84,770	2,927	2.2
SLP	63,656	67,390	2,659	5.9	80,531	79,221	2,722	-1.6	144,167	146,663	4,146	1.7
Statewide	92,483	101,413	3,224	9.7*	169,049	171,410	3,969	1.4	261,532	272,823	5,492	4.3*

^aHarvest estimates do not include deer taken with DMA permits. An additional 7,389 deer were taken with these permits.^b95% confidence limit for the 2007 estimate.

*P<0.005.

Table 6 (continued). Number of deer harvested in Michigan by hunting season, 2006-2007.^a

Season and Area	Antlerless				Antlered Bucks				Sexes Combined			
	2006 Harvest	2007 Harvest	95% CL ^b	Change from 2006 to 2007 (%)	2006 Harvest	2007 Harvest	95% CL ^b	Change from 2006 to 2007	2006 Harvest	2007 Harvest	95% CL ^b	Change from 2006 to 2007
Muzzleloader												
West UP	1,923	2,680	503	39.3	1,855	1,410	348	-24.0	3,778	4,089	628	8.2
East UP	643	549	242	-14.6	750	738	256	-1.6	1,393	1,284	369	-7.8
NE LP	2,268	2,360	478	4.1	1,699	1,292	330	-24.0	3,967	3,650	592	-8.0
NW LP	1,996	2,815	518	41.0	1,361	1,183	312	-13.1	3,358	3,998	621	19.1
Sag. Bay	5,462	6,441	782	17.9	2,485	2,664	497	7.2	7,946	9,107	961	14.6
SW LP	6,088	7,210	835	18.4	2,822	3,064	515	8.6	8,910	10,275	1,021	15.3
SC LP	9,007	7,576	856	-15.9	2,705	3,441	558	27.2	11,711	11,018	1,045	-5.9
SE LP	2,339	2,464	478	5.4	1,046	1,289	342	23.2	3,384	3,752	606	10.9
UP	2,566	3,228	558	25.8	2,605	2,149	432	-17.5	5,171	5,373	729	3.9
NLP	5,439	6,706	799	23.3	3,502	2,965	497	-15.3	8,941	9,672	960	8.2
SLP	21,720	22,159	1,459	2.0	8,616	9,967	948	15.7	30,335	32,129	1,800	5.9
Statewide	29,726	32,094	1,760	8.0	14,722	15,080	1,162	2.4	44,448	47,174	2,175	6.1
Late Antlerless												
West UP	0	0	0		0	0	0		0	0	0	
East UP	0	0	0		0	0	0		0	0	0	
NE LP	788	1,335	365	69.5	0	0	0		788	1,335	365	69.5
NW LP	0	0	0		0	0	0		0	0	0	
Sag. Bay	1,242	2,318	470	86.6*	0	0	0		1,242	2,318	470	86.6*
SW LP	3,866	5,460	733	41.2*	0	0	0		3,866	5,460	733	41.2*
SC LP	3,427	9,020	966	163.2*	0	0	0		3,427	9,020	966	163.2*
SE LP	799	1,369	373	71.5	0	0	0		799	1,369	373	71.5
UP	0	0	0		0	0	0		0	0	0	
NLP	788	1,335	365	69.5	0	0	0		788	1,335	365	69.5
SLP	9,334	18,168	1,353	94.6*	0	0	0		9,334	18,168	1,353	94.6*
Statewide	10,122	19,503	1,411	92.7*	0	0	0		10,122	19,503	1,411	92.7*

^aHarvest estimates do not include deer taken with DMA permits. An additional 7,389 deer were taken with these permits.^b95% confidence limit for the 2007 estimate.^cP<0.005.

Table 6 (continued). Number of deer harvested in Michigan by hunting season, 2006-2007.^a

Season and Area	Antlerless				Antlered Bucks				Sexes Combined			
	2006 Harvest	2007 Harvest	95% CL ^b	Change from 2006 to 2007 (%)	2006 Harvest	2007 Harvest	95% CL ^b	Change from 2006 to 2007 (%)	2006 Harvest	2007 Harvest	95% CL ^b	Change from 2006 to 2007 (%)
Youth												
West UP	138	179	76	30.0	368	368	108	-0.1	506	547	132	8.1
East UP	30	47	39	58.8	70	141	67	101.3	100	188	78	88.6
NE LP	138	480	124	248.6*	641	830	163	29.5	778	1,310	204	68.4*
NW LP	346	625	141	80.9*	1,279	1,557	222	21.7	1,624	2,182	263	34.3*
Sag. Bay	699	651	144	-6.8	1,606	1,591	225	-0.9	2,305	2,243	267	-2.7
SW LP	545	574	135	5.5	914	764	156	-16.5	1,459	1,338	206	-8.3
SC LP	679	564	134	-17.0	1,322	1,649	229	24.7	2,001	2,212	265	10.5
SE LP	219	369	108	68.7	545	509	127	-6.6	763	878	167	15.0
UP	167	226	85	35.1	438	509	127	16.1	606	735	153	21.4
NLP	675	1,343	207	98.9*	2,338	2,744	296	17.3	3,013	4,087	360	35.6*
SLP	1,950	1,921	248	-1.5	3,968	4,155	364	4.7	5,918	6,076	440	2.7
Statewide	2,793	3,490	334	25.0*	6,745	7,408	487	9.8	9,537	10,898	590	14.3*
All Seasons												
West UP	12,020	15,048	1,320	25.2*	27,973	32,143	1,735	14.9*	39,995	47,175	2,396	18.0*
East UP	2,768	2,433	503	-12.1	6,745	8,387	888	24.3	9,514	10,813	1,096	13.7
NE LP	18,496	20,301	1,456	9.8	34,381	34,309	1,797	-0.2	52,878	54,600	2,533	3.3
NW LP	17,709	20,610	1,450	16.4*	42,410	40,400	1,960	-4.7	60,123	60,993	2,664	1.4
Sag. Bay	31,994	38,442	2,170	20.2*	42,293	42,267	2,061	-0.1	74,286	80,717	3,451	8.7
SW LP	38,335	40,843	2,333	6.5	41,189	40,935	2,096	-0.6	79,521	81,791	3,627	2.9
SC LP	50,349	56,033	2,764	11.3*	53,264	51,303	2,327	-3.7	103,609	107,360	4,187	3.6
SE LP	13,292	15,456	1,360	16.3	17,456	17,687	1,332	1.3	30,747	33,145	2,202	7.8
UP	14,788	17,481	1,413	18.2	34,718	40,529	1,949	16.7*	49,509	57,988	2,635	17.1*
NLP	44,484	50,763	2,302	14.1*	88,633	85,507	2,845	-3.5	133,122	136,245	4,034	2.3
SLP	125,691	140,922	4,309	12.1*	142,361	141,393	3,848	-0.7	268,043	282,362	6,684	5.3*
Statewide	184,962	209,166	5,098	13.1*	265,711	267,429	5,190	0.6	450,674	476,595	8,267	5.8*

^aHarvest estimates do not include deer taken with DMA permits. An additional 7,389 deer were taken with these permits.^b95% confidence limit for the 2007 estimate.^cP<0.005.

Table 7. Number of deer harvested on public and private lands during all seasons combined in Michigan by management region, 2006-2007.^a

Season and Area	Antlerless				Antlered Bucks				Sexes Combined			
	2006 Harvest	2007 Harvest	95% CL ^b	Change from 2006 to 2007 (%)	2006 Harvest	2007 Harvest	95% CL ^b	Change from 2006 to 2007 (%)	2006 Harvest	2007 Harvest	95% CL ^b	Change from 2006 to 2007 (%)
Public Lands												
West UP	3,205	4,295	680	34.0	9,155	11,050	992	20.7	12,360	15,345	1,284	24.2*
East UP	398	441	203	10.7	2,089	3,224	552	54.3*	2,487	3,665	594	47.3*
NE LP	4,826	4,508	647	-6.6	9,057	9,563	934	5.6	13,884	14,071	1,225	1.3
NW LP	2,444	2,208	442	-9.7	9,940	9,588	937	-3.5	12,385	11,796	1,074	-4.8
Sag. Bay	3,130	3,054	547	-2.4	4,203	4,706	658	12.0	7,333	7,760	930	5.8
SW LP	2,423	2,095	438	-13.5	2,863	2,791	503	-2.5	5,286	4,886	725	-7.6
SC LP	3,597	3,520	609	-2.2	3,215	4,488	672	39.6*	6,812	8,008	982	17.6
SE LP	903	1,380	387	52.9	1,453	1,420	363	-2.3	2,356	2,799	575	18.8
UP	3,603	4,736	709	31.5	11,245	14,274	1,135	26.9*	14,848	19,010	1,415	28.0*
NLP	8,162	7,425	823	-9.0	20,789	20,759	1,375	-0.1	28,951	28,184	1,697	-2.7
SLP	9,161	9,339	974	1.9	9,943	11,797	1,062	18.6	19,104	21,136	1,569	10.6
Statewide	20,926	21,500	1,467	2.7	41,977	46,830	2,087	11.6*	62,903	68,330	2,724	8.6*
Private Lands												
West UP	8,815	10,765	1,072	22.1	18,818	21,103	1,408	12.1	27,634	31,856	1,944	15.3*
East UP	2,370	1,993	456	-15.9	4,656	5,166	694	10.9	7,026	7,155	899	1.8
NE LP	13,669	15,805	1,278	15.6	25,324	24,752	1,528	-2.3	38,995	40,549	2,179	4.0
NW LP	15,264	18,403	1,370	20.6*	32,470	30,816	1,716	-5.1	47,738	49,207	2,415	3.1
Sag. Bay	28,864	35,384	2,082	22.6*	38,089	37,556	1,947	-1.4	66,953	72,945	3,288	8.9
SW LP	35,913	38,738	2,280	7.9	38,326	38,136	2,033	-0.5	74,236	76,884	3,530	3.6
SC LP	46,752	52,503	2,680	12.3*	50,049	46,807	2,224	-6.5	96,798	99,329	4,030	2.6
SE LP	12,389	14,075	1,304	13.6	16,002	16,264	1,278	1.6	28,391	30,340	2,112	6.9
UP	11,184	12,758	1,165	14.1	23,474	26,268	1,570	11.9	34,661	39,011	2,142	12.6*
NLP	36,321	43,349	2,126	19.3*	67,845	64,758	2,483	-4.5	104,171	108,089	3,615	3.8
SLP	116,531	131,559	4,172	12.9*	132,416	129,573	3,691	-2.1	248,940	261,165	6,441	4.9
Statewide	164,036	187,666	4,837	14.4*	223,735	220,599	4,738	-1.4	387,771	408,265	7,715	5.3*

^aHarvest estimates do not include deer taken with DMA permits. An additional 7,389 deer were taken with these permits.

^b95% confidence limit for the 2007 estimate.

*P<0.005.

Table 8. Percentage of deer hunters harvesting deer in Michigan during all seasons, 2007.^a

Sex and Area	Number of deer harvested									
	≥1 deer		≥2 deer		≥3 deer		≥4 deer		≥5 deer	
	Success	95% CL ^b	Success	95% CL ^b	Success	95% CL ^b	Success	95% CL ^b	Success	95% CL ^b
Antlerless										
West UP	15.5	1.2	2.8	0.5	0.6	0.3	0.1	0.1	0.1	0.1
East UP	7.6	1.4	1.2	0.6	0.1	0.2	0.0	0.0	0.0	0.0
NE LP	14.1	0.9	1.8	0.3	0.2	0.1	<0.1	0.1	0.0	0.0
NW LP	13.4	0.8	1.9	0.3	0.1	0.1	0.0	0.0	0.0	0.0
Sag. Bay	26.3	1.2	6.0	0.6	0.9	0.3	0.1	0.1	0.0	0.0
SW LP	27.5	1.2	7.0	0.7	1.8	0.4	0.1	0.1	0.0	0.0
SC LP	31.7	1.2	8.1	0.7	2.3	0.4	0.3	0.1	0.0	0.0
SE LP	21.2	1.5	3.9	0.7	0.9	0.4	<0.1	0.1	0.0	0.0
UP	13.6	1.0	2.4	0.4	0.5	0.2	0.1	0.1	<0.1	0.1
NLP	15.2	0.6	2.2	0.3	0.2	0.1	0.0	0.0	0.0	0.0
SLP	29.2	0.7	7.5	0.4	1.9	0.2	0.2	0.1	0.0	0.0
Statewide	24.0	0.4	5.6	0.3	1.3	0.1	0.1	<0.1	<0.1	<0.1
Antlered bucks^c										
West UP	37.1	1.6	3.0	0.6						
East UP	27.6	2.5	2.3	0.8						
NE LP	24.5	1.1	2.0	0.4						
NW LP	26.3	1.1	2.7	0.4						
Sag. Bay	30.9	1.3	4.3	0.6						
SW LP	30.5	1.3	5.2	0.6						
SC LP	32.3	1.2	5.4	0.6						
SE LP	25.6	1.7	3.2	0.7						
UP	35.3	1.3	3.1	0.5						
NLP	27.0	0.8	2.7	0.3						
SLP	33.2	0.7	5.6	0.4						
Statewide	34.5	0.5	5.2	0.2						

^aExcluded people that did not hunt during the season and deer taken with DMA permits.

^b95% confidence limit.

^cThe season bag limit for antlered deer was two.

Table 8 (continued). Percentage of deer hunters harvesting deer in Michigan during all seasons, 2007.^a

Sex and Area	Number of deer harvested									
	≥1 deer		≥2 deer		≥3 deer		≥4 deer		≥5 deer	
	Success	95% CL ^b	Success	95% CL ^b	Success	95% CL ^b	Success	95% CL ^b	Success	95% CL ^b
Sexes Combined										
West UP	46.9	1.6	10.0	1.0	2.1	0.5	0.4	0.2	0.0	0.0
East UP	32.4	2.6	6.0	1.3	0.7	0.5	0.1	0.2	0.0	0.0
NE LP	34.8	1.2	7.1	0.7	1.2	0.3	0.1	0.1	0.0	0.0
NW LP	36.1	1.2	8.0	0.7	1.2	0.3	0.2	0.1	0.1	0.1
Sag. Bay	47.9	1.3	16.1	1.0	4.5	0.6	1.1	0.3	0.2	0.2
SW LP	47.7	1.4	17.5	1.1	5.7	0.7	1.6	0.4	0.2	0.2
SC LP	52.5	1.3	19.6	1.0	6.4	0.6	2.1	0.4	0.2	0.2
SE LP	39.8	1.8	11.7	1.2	3.0	0.7	1.0	0.4	0.0	0.0
UP	43.5	1.4	9.1	0.8	1.8	0.4	0.3	0.2	0.0	0.0
NLP	37.1	0.8	8.5	0.5	1.5	0.2	0.2	0.1	0.1	0.1
SLP	50.5	0.7	18.7	0.6	6.1	0.4	1.8	0.2	<0.1	<0.1
Statewide	48.4	0.5	16.1	0.4	4.6	0.2	1.3	0.1	0.3	0.1

^aExcluded people that did not hunt during the season and deer taken with DMA permits.

^b95% confidence limit.

^cThe season bag limit for antlered deer was two.

Table 9. Percentage of deer hunters harvesting at least one deer in Michigan by hunting season, 2007.^a

Sex and Area	Season											
	Archery		Regular Firearm		Muzzleloader		Late Antlerless		Youth		All Seasons	
	Success	95% CL ^b	Success	95% CL ^b	Success	95% CL ^b	Success	95% CL ^b	Success	95% CL ^b	Success	95% CL ^b
Antlerless												
West UP	19.4	2.5	9.5	1.0	17.2	2.9	0.0	0.0	12.6	5.0	15.5	1.2
East UP	12.7	3.7	3.6	1.1	7.2	3.0	0.0	0.0	11.3	8.9	7.6	1.4
NE LP	10.8	1.4	9.4	0.8	9.5	1.8	35.2	7.6	14.2	3.4	14.1	0.9
NW LP	12.5	1.3	7.6	0.7	10.3	1.8	0.0	0.0	11.8	2.5	13.4	0.8
Sag. Bay	15.7	1.5	18.5	1.1	17.1	1.9	29.6	5.0	11.0	2.3	26.3	1.2
SW LP	13.2	1.4	18.1	1.2	16.6	1.7	26.3	3.0	12.0	2.7	27.5	1.2
SC LP	16.2	1.4	22.0	1.2	16.5	1.7	31.6	2.7	8.4	1.9	31.7	1.2
SE LP	13.5	1.7	12.8	1.5	11.9	2.1	21.8	5.1	11.6	3.2	21.2	1.5
UP	17.8	2.1	8.1	0.8	14.3	2.2	0.0	0.0	12.3	4.3	13.6	1.0
NLP	12.7	0.9	9.4	0.5	11.0	1.2	35.2	7.6	13.3	1.9	15.2	0.6
SLP	15.2	0.8	19.7	0.7	16.3	1.0	28.8	1.8	10.1	1.2	29.2	0.7
Statewide	15.7	0.6	14.8	0.4	15.1	0.7	29.2	1.7	11.3	1.0	24.0	0.4
Antlered Bucks												
West UP	18.9	2.5	35.9	1.7	9.5	2.2	0.0	0.0	25.8	6.6	37.1	1.6
East UP	13.3	3.8	27.0	2.6	11.4	3.7	0.0	0.0	34.0	13.2	27.6	2.5
NE LP	14.0	1.5	22.4	1.2	5.5	1.4	0.0	0.0	24.5	4.2	24.5	1.1
NW LP	18.0	1.5	22.0	1.1	4.5	1.2	0.0	0.0	29.4	3.6	26.3	1.1
Sag. Bay	21.6	1.6	25.1	1.3	7.2	1.3	0.0	0.0	26.7	3.3	30.9	1.3
SW LP	24.7	1.7	22.5	1.3	7.3	1.2	0.0	0.0	15.9	3.0	30.5	1.3
SC LP	25.4	1.6	24.9	1.2	7.6	1.2	0.0	0.0	24.4	3.0	32.3	1.2
SE LP	20.2	2.0	18.3	1.7	6.2	1.6	0.0	0.0	16.0	3.7	25.6	1.7
UP	17.5	2.1	33.8	1.4	10.2	1.9	0.0	0.0	27.6	5.9	35.3	1.3
NLP	17.2	1.0	22.4	0.8	5.1	0.9	0.0	0.0	27.1	2.5	27.0	0.8
SLP	24.6	0.9	24.5	0.7	7.5	0.7	0.0	0.0	21.8	1.7	33.2	0.7
Statewide	23.2	0.7	26.6	0.5	7.4	0.5	0.0	0.0	24.0	1.4	34.5	0.5

^aExcluded people that did not hunt during the season and deer taken with DMA permits.

^b95% confidence limit.

Table 9 (continued). Percentage of deer hunters harvesting at least one deer in Michigan by hunting season, 2007.^a

Sex and Area	Season											
	Archery		Regular Firearm		Muzzleloader		Late Antlerless		Youth		All Seasons	
	Success	95% CL ^b	Success	95% CL ^b	Success	95% CL ^b	Success	95% CL ^b	Success	95% CL ^b	Success	95% CL ^b
Sexes combined												
West UP	35.7	3.1	42.2	1.7	25.7	3.3	0.0	0.0	38.3	7.3	46.9	1.6
East UP	24.9	4.8	29.6	2.7	17.5	4.4	0.0	0.0	45.3	13.9	32.4	2.6
NE LP	22.9	1.9	29.7	1.3	14.6	2.2	35.2	7.6	38.7	4.7	34.8	1.2
NW LP	28.5	1.7	28.3	1.2	14.4	2.0	0.0	0.0	41.2	3.8	36.1	1.2
Sag. Bay	33.4	1.9	39.0	1.4	23.5	2.1	29.6	5.0	37.7	3.6	47.9	1.3
SW LP	33.6	1.9	36.4	1.4	22.7	1.9	26.3	3.0	27.9	3.7	47.7	1.4
SC LP	36.6	1.8	42.2	1.4	23.4	1.9	31.6	2.7	32.8	3.3	52.5	1.3
SE LP	29.9	2.3	28.8	2.0	17.4	2.5	21.8	5.1	27.6	4.5	39.8	1.8
UP	33.1	2.6	39.2	1.5	23.4	2.7	0.0	0.0	39.9	6.5	43.5	1.4
NLP	27.7	1.2	29.9	0.8	15.8	1.4	35.2	7.6	40.4	2.8	37.1	0.8
SLP	35.1	1.0	39.5	0.8	22.9	1.1	28.8	1.8	31.9	1.9	50.5	0.7
Statewide	34.6	0.8	37.8	0.6	21.7	0.9	29.2	1.7	35.3	1.5	48.4	0.5

^aExcluded people that did not hunt during the season and deer taken with DMA permits.

^b95% confidence limit.

Appendix A. Antlerless deer hunting license quotas, number of antlerless licenses sold, and number of hunters purchasing an antlerless license in Michigan during 2007, summarized by Deer Management Unit and license type (public and private lands).

DMU ^a	DMU Name	Public land			Private land		
		License quota	Licenses sold ^b	License buyers ^c	License quota	Licenses sold ^{b,c}	License buyers ^c
001	Alcona County	2,000	1,771	1,614	5,500	3,502	3,067
003	Allegan County	3,000	1,574	1,568	12,000	8,567	7,162
004	Alpena County	1,000	878	786	4,000	2,775	2,462
005	Antrim County	0	0	0	4,000	3,682	3,021
006	Arenac County	0	0	0	6,500	5,337	4,290
007	Big Bay Unit	0	0	0	0	0	0
008	Barry County	1,800	1,382	1,379	17,000	9,331	7,621
009	Bay County	100	89	88	3,000	2,236	1,973
010	Benzie County	0	0	0	0	0	0
011	Berrien County	200	132	132	8,000	3,571	3,019
012	Branch County	100	28	28	12,000	6,948	5,343
013	Calhoun County	100	32	32	16,000	10,489	8,141
014	Cass County	500	294	294	8,000	6,131	4,719
015	Charlevoix County	0	0	0	2,800	2,572	2,094
016	Cheboygan County	200	276	275	400	303	303
017	Sault Ste. Marie Unit	0	0	0	2,000	1,772	1,472
018	Clare County	0	0	0	8,500	7,450	6,181
019	Clinton County	1,200	659	656	13,000	7,734	6,257
020	Crawford County	700	764	760	1,500	1,246	1,101
021	Manistique Unit	0	0	0	600	449	444
022	Iron Mountain Unit	2,500	2,094	1,964	4,000	3,433	2,809
023	Eaton County	100	56	56	12,800	8,056	6,618
024	Emmet County	200	211	211	1,500	1,358	1,109
025	Genesee County	0	0	0	8,500	5,900	5,104
026	Gladwin County	0	0	0	7,500	6,556	5,249
027	Watersmeet Unit	0	0	0	0	0	0
028	Grand Traverse County	0	0	0	0	0	0
029	Gratiot County	1,600	885	884	8,500	6,394	4,959
030	Hillsdale County	400	230	230	15,000	8,788	6,992
031	Nisula Unit	0	0	0	800	644	625
032	Huron County	1,000	840	839	10,000	8,399	6,516
033	Ingham County	600	304	304	10,000	7,353	5,810
034	Ionia County	1,200	536	532	14,300	9,585	7,586

^aSee Figure 2 for the locations of DMUs.

^bNumber of licenses sold could exceed the quota because junior licenses do not count towards the quota.

^cNumber of license buyers does not add up to statewide total because hunters could purchase licenses in more than one DMU.

Appendix A (continued). Antlerless deer hunting license quotas, number of antlerless licenses sold, and number of hunters purchasing an antlerless license in Michigan during 2007, summarized by Deer Management Unit and license type (public and private lands).

DMU ^a	DMU Name	Public land			Private land		
		License quota	Licenses sold ^b	License buyers ^c	License quota	Licenses sold ^{b,c}	License buyers ^c
035	Iosco County	800	724	720	4,200	3,706	3,059
036	Amasa/Michigamme Unit	0	0	0	0	0	0
037	Isabella County	100	77	77	10,000	7,887	6,528
038	Jackson County	1,600	1,035	1,030	20,000	11,961	9,476
039	Kalamazoo County	900	326	325	9,000	5,399	4,480
040	Kalkaska County	0	0	0	0	0	0
041	Kent County	1,100	569	568	14,000	8,870	7,556
042	Keweenaw Unit	0	0	0	0	0	0
043	Lake County	0	0	0	0	0	0
044	Lapeer County	2,000	634	633	15,000	10,380	8,594
045	Leelanau County	0	0	0	400	345	343
046	Lenawee County	400	168	166	9,500	6,177	5,245
047	Livingston County	1,300	1,006	1,001	15,000	8,662	7,065
048	Newberry Unit	0	0	0	0	0	0
049	Trout Lake Unit	0	0	0	2,000	1,724	1,379
050	Macomb County	200	74	74	3,000	2,486	2,175
051	Manistee County	0	0	0	2,500	2,197	2,168
053	Mason County	0	0	0	5,000	4,590	3,599
054	Mecosta County	0	0	0	14,000	9,253	7,819
055	Menominee Unit	3,000	2,627	2,065	14,000	6,325	5,208
056	Midland County	1,000	920	918	7,000	5,439	4,618
057	Missaukee County	0	0	0	2,000	1,774	1,741
058	Monroe County	400	272	270	1,800	1,587	1,426
059	Montcalm County	1,200	1,010	1,005	19,000	13,620	10,537
060	Montmorency County	2,200	1,886	1,833	6,800	4,155	3,700
061	Muskegon County	800	824	817	6,500	4,570	3,802
062	Newaygo County	0	0	0	6,000	5,562	4,473
063	Oakland County	2,500	1,292	1,287	7,000	4,811	4,029
064	Oceana County	0	0	0	4,500	4,104	3,167
065	Ogemaw County	300	388	385	1,000	765	758
066	Ontonagon County	0	0	0	0	0	0
067	Osceola County	0	0	0	3,000	2,690	2,644

^aSee Figure 2 for the locations of DMUs.

^bNumber of licenses sold could exceed the quota because junior licenses do not count towards the quota.

^cNumber of license buyers does not add up to statewide total because hunters could purchase licenses in more than one DMU.

Appendix A (continued). Antlerless deer hunting license quotas, number of antlerless licenses sold, and number of hunters purchasing an antlerless license in Michigan during 2007, summarized by Deer Management Unit and license type (public and private lands).

DMU ^a	DMU Name	Public land			Private land		
		License quota	Licenses sold ^b	License buyers ^c	License quota	Licenses sold ^{b,c}	License buyers ^c
068	Oscoda County	2,000	1,791	1,782	3,000	2,610	2,260
069	Otsego County	300	331	331	600	475	466
070	Ottawa County	400	226	226	9,000	5,797	4,925
071	Presque Isle County	1,000	867	826	4,500	3,938	3,357
072	Roscommon County	0	0	0	1,000	832	797
073	Saginaw County	200	187	187	6,000	5,187	4,250
074	St. Clair County	600	480	476	7,000	6,209	5,539
075	St. Joseph County	300	132	131	8,000	5,100	4,026
076	Sanilac County	1,500	598	596	14,000	12,080	9,643
078	Shiawassee County	200	78	76	13,000	8,147	6,517
079	Tuscola County	2,700	1,257	1,255	14,000	9,187	7,529
080	Van Buren County	200	70	70	10,000	7,033	5,807
081	Washtenaw County	1,500	835	831	14,000	7,595	6,141
082	Wayne County	100	41	40	1,200	744	696
083	Wexford County	0	0	0	0	0	0
115	Beaver Island	300	82	82	700	290	244
117	Drummond Island	300	243	243	200	167	146
121	Bay De Noc	800	570	569	1,600	1,306	1,038
122	Norway Unit	200	169	154	2,500	736	620
127	Ironwood Unit	0	0	0	400	349	344
131	Twin Lakes Unit	0	0	0	0	0	0
135	Tawas Unit	200	57	57	600	395	358
145	North Manitou Island	0	0	0	0	0	0
149	Round/Bois Blanc Island	100	62	62	100	80	72
152	Gwinn Unit	0	0	0	600	501	439
155	Gladstone Unit	1,000	865	732	4,000	1,792	1,524
173	Shiawassee Flats	1,400	0	0	400	352	269
174	St. Clair Flats	400	0	0	300	123	105
245	South Fox Island	0	0	0	0	0	0
252	Rock Unit	500	406	394	1,000	841	706
255	LaBranche Unit	1,800	1,647	1,342	1,700	1,373	1,177
452	Core Area	600	509	490	8,000	5,660	4,814
NA	Deer Management Assistance Permits	NA	NA	NA	NA	9,512	767
NA	Managed Deer Hunt Permits	NA	974	696	NA	NA	NA

^aSee Figure 2 for the locations of DMUs.

^bNumber of licenses sold could exceed the quota because junior licenses do not count towards the quota.

^cNumber of license buyers does not add up to statewide total because hunters could purchase licenses in more than one DMU.

Appendix B. Estimated number of deer hunters, hunting effort, and deer harvested in Michigan during 2007, summarized by Deer Management Unit.

DMU ^d	Hunters ^{b,c}		Hunting effort (days) ^b		Deer harvested (all seasons combined) ^a					
					Antlerless		Antlered bucks		Sexes combined	
	No.	95% CL ^e	No.	95% CL	No.	95% CL	No.	95% CL	No.	95% CL
001	9,107	877	71,137	9,459	1,906	477	2,481	588	4,387	714
003	14,909	1,118	205,449	21,098	4,450	743	4,003	647	8,453	1,131
004	5,420	683	52,021	9,484	1,297	384	1,693	479	2,990	623
005	7,673	799	71,356	10,489	1,670	435	2,363	430	4,033	741
006	9,098	866	98,146	13,269	2,794	571	3,502	521	6,296	964
007	8,214	832	77,872	10,424	292	152	2,530	417	2,822	523
008	15,279	1,133	189,560	19,351	5,460	870	4,725	977	10,185	1,266
009	5,373	663	59,654	9,780	1,009	305	1,520	305	2,529	543
010	4,622	620	46,974	9,616	339	188	1,311	370	1,650	419
011	5,404	674	77,802	12,815	1,343	385	2,062	461	3,405	726
012	7,336	792	104,317	14,946	4,174	781	3,568	819	7,742	1,199
013	12,619	1,033	172,016	19,438	5,447	884	5,470	994	10,917	1,367
014	7,114	783	105,132	15,497	2,832	653	2,827	510	5,659	1,018
015	4,537	613	39,301	7,618	952	296	1,687	344	2,639	554
016	8,182	830	84,071	11,825	427	207	2,012	369	2,439	510
017	6,249	721	65,179	10,084	805	284	2,110	401	2,915	579
018	14,114	1,075	153,031	17,063	3,594	619	3,369	578	6,963	922
019	12,053	1,000	152,029	17,778	4,367	768	4,529	594	8,896	1,153
020	9,162	878	77,033	10,348	837	339	1,439	451	2,276	515
021	10,349	929	90,840	11,560	797	305	3,181	392	3,978	653
022	11,642	981	100,459	11,449	3,022	568	4,528	527	7,550	972
023	9,336	892	123,097	16,262	3,661	682	3,378	656	7,039	1,042
024	4,771	626	46,423	8,244	553	220	1,362	358	1,915	453
025	10,735	946	154,349	19,598	2,303	516	3,189	542	5,492	892
026	15,499	1,130	165,914	17,518	3,484	606	3,946	629	7,430	990
027	3,000	499	22,406	4,984	155	129	1,035	322	1,190	328
028	7,026	762	77,462	12,833	354	172	1,892	361	2,246	476
029	9,086	871	107,864	15,806	3,941	744	3,886	557	7,827	1,154
030	10,756	952	131,748	16,833	3,874	715	3,623	739	7,497	1,078
031	5,204	660	49,922	8,767	753	270	1,868	315	2,621	530
032	12,623	1,028	140,702	16,085	5,286	846	5,342	664	10,628	1,343
033	9,771	906	141,361	18,755	4,046	737	3,746	560	7,792	1,147
034	13,539	1,064	198,269	21,837	7,115	1,023	5,116	977	12,231	1,459

^aHarvest estimates do not include deer taken with DMA permits. An additional 7,389 deer were taken with these permits.

^bColumn totals for hunting effort and harvest may not equal regional and statewide totals because of rounding errors.

^cNumber of hunters does not add up to statewide total because hunters can hunt in more than one DMU.

^dSee Figure 2 for the locations of DMUs.

^e95% confidence limit.

Appendix B (continued). Estimated number of deer hunters, hunting effort, and deer harvested in Michigan during 2007, summarized by Deer Management Unit.

DMU ^d	Hunters ^{b,c}		Hunting effort (days) ^b		Deer harvested (all seasons combined) ^a					
					Antlerless		Antlered bucks		Sexes combined	
	No.	95% CL ^e	No.	95% CL	No.	95% CL	No.	95% CL	No.	95% CL
035	10,883	950	115,652	14,763	1,900	438	3,137	509	5,037	778
036	3,504	544	27,294	5,309	34	48	1,108	304	1,142	318
037	12,556	1,015	143,484	15,939	4,490	711	5,091	654	9,581	1,146
038	15,886	1,152	224,627	22,952	6,890	1,005	5,057	1,166	11,947	1,453
039	8,195	837	116,693	16,265	2,492	563	2,889	772	5,381	925
040	9,057	874	78,568	10,718	518	204	2,173	386	2,691	522
041	16,239	1,155	218,767	21,929	4,454	732	5,376	949	9,830	1,195
042	2,047	416	22,078	6,155	58	68	844	223	902	296
043	16,202	1,158	151,193	16,307	634	251	3,223	594	3,857	620
044	16,813	1,175	225,785	23,321	5,517	827	4,890	998	10,407	1,260
045	4,185	590	43,117	8,798	437	201	1,314	284	1,751	453
046	8,105	831	113,108	16,240	2,119	523	2,807	758	4,926	883
047	14,196	1,086	195,699	21,202	4,482	727	4,184	649	8,666	1,121
048	5,767	700	45,587	7,737	170	153	1,416	370	1,586	391
049	8,019	818	70,713	10,420	781	304	2,217	321	2,998	612
050	4,932	643	60,280	11,661	971	329	1,614	357	2,585	591
051	11,947	993	124,388	14,855	1,500	367	3,074	535	4,574	712
053	11,272	958	127,958	15,558	2,641	537	3,732	614	6,373	922
054	13,593	1,055	147,159	16,479	4,300	711	4,290	637	8,590	1,067
055	13,453	1,049	130,233	14,067	4,815	754	7,013	696	11,828	1,285
056	12,016	990	154,957	18,359	2,980	548	3,692	590	6,672	929
057	10,171	911	103,678	13,164	1,439	348	3,110	444	4,549	714
058	4,514	611	58,944	11,039	584	229	783	250	1,367	402
059	18,426	1,232	231,911	22,861	7,808	1,019	7,280	871	15,088	1,557
060	10,032	921	79,152	10,621	1,688	428	2,006	569	3,694	673
061	9,849	899	132,570	17,086	2,095	478	2,369	505	4,464	782
062	23,238	1,370	255,432	22,326	3,908	629	6,361	806	10,269	1,097
063	11,957	999	164,922	19,981	3,075	618	3,961	678	7,036	1,043
064	10,380	917	127,020	15,785	2,286	495	3,050	554	5,336	816
065	15,153	1,113	159,230	16,966	1,716	381	4,233	564	5,949	794
066	5,483	682	46,346	7,709	239	169	2,109	341	2,348	482
067	13,012	1,030	135,287	15,965	1,845	399	4,190	544	6,035	807

^aHarvest estimates do not include deer taken with DMA permits. An additional 7,389 deer were taken with these permits.

^bColumn totals for hunting effort and harvest may not equal regional and statewide totals because of rounding errors.

^cNumber of hunters does not add up to statewide total because hunters can hunt in more than one DMU.

^dSee Figure 2 for the locations of DMUs.

^e95% confidence limit.

Appendix B (continued). Estimated number of deer hunters, hunting effort, and deer harvested in Michigan during 2007, summarized by Deer Management Unit.

DMU ^d	Hunters ^{b,c}		Hunting effort (days) ^b		Deer harvested (all seasons combined) ^a					
					Antlerless		Antlered bucks		Sexes combined	
	No.	95% CL ^e	No.	95% CL	No.	95% CL	No.	95% CL	No.	95% CL
068	10,667	940	81,387	10,539	1,593	394	1,857	537	3,450	644
069	7,047	770	60,036	9,354	575	214	1,222	343	1,797	438
070	11,020	960	154,043	19,182	2,902	652	2,540	644	5,442	936
071	8,678	862	86,702	11,879	1,804	416	3,240	691	5,044	771
072	13,150	1,047	123,304	14,326	932	289	2,274	484	3,206	581
073	9,501	881	126,156	16,724	2,187	488	2,741	558	4,928	806
074	12,525	1,012	166,475	18,225	2,675	543	2,842	603	5,517	850
075	6,453	749	88,956	14,069	2,651	580	2,430	729	5,081	920
076	16,851	1,180	190,333	19,535	6,688	970	7,184	1,063	13,872	1,514
078	10,549	941	151,644	19,183	3,830	710	3,736	596	7,566	1,149
079	15,459	1,132	203,517	21,438	5,364	865	5,369	947	10,733	1,318
080	8,664	856	121,502	17,001	2,633	569	2,738	539	5,371	885
081	11,884	1,001	158,780	18,509	4,031	759	4,041	902	8,072	1,132
082	1,430	346	14,965	5,006	250	170	360	164	610	297
083	11,361	976	103,743	13,142	456	204	2,761	495	3,217	556
115	400	175	2,329	1,362	132	101	89	110	221	142
117	1,886	398	14,451	4,037	191	123	496	169	687	277
121	3,005	500	28,731	6,366	839	275	1,194	294	2,033	491
122	2,500	459	29,833	8,356	508	256	797	284	1,305	400
127	3,157	517	31,062	6,780	346	202	1,160	295	1,506	416
131	2,535	465	25,200	6,227	128	121	774	219	902	294
135	789	257	8,343	3,918	72	78	272	155	344	177
145	1	0	6	0	0	0	1	0	1	0
149	388	179	2,695	1,464	86	80	102	94	188	136
152	5,003	649	49,769	8,604	260	158	1,373	312	1,633	388
155	4,961	645	50,965	9,060	1,244	469	1,806	429	3,050	701
173	1,812	386	16,716	5,517	517	256	491	230	1,008	372
174	288	145	1,795	1,137	116	182	66	104	182	232
245	33	49	200	291	0	0	0	0	0	0
252	2,901	494	28,759	6,802	670	260	1,082	211	1,752	458
255	3,685	555	34,254	6,902	1,053	320	1,444	283	2,497	527
273	9	18	9	17	9	17	0	0	9	17
452	10,372	937	90,695	11,981	2,218	496	3,067	787	5,285	777

^aHarvest estimates do not include deer taken with DMA permits. An additional 7,389 deer were taken with these permits.

^bColumn totals for hunting effort and harvest may not equal regional and statewide totals because of rounding errors.

^cNumber of hunters does not add up to statewide total because hunters can hunt in more than one DMU.

^dSee Figure 2 for the locations of DMUs.

^e95% confidence limit.